

BOSTER BIOLOGICAL TECHNOLOGY, LTD.

3942 B Valley Ave, Pleasanton, CA, 94566 Phone: 925-485-4527. 888-466-3604 Fax: 925-485-4560

www.bosterbio.com

Certificate of Analysis

Note: this is a sample COA. To get the COA for your lot #, please contact us at support@bosterbio.com

To whom it may concern,

This letter attests that Anti-Fas Antibody , catalog # PA1119, is manufactured by Boster Biological Technology., Ltd, through test and assay, we got the following data:

1. Immunogen

A synthetic peptide corresponding to a sequence at the N-terminus of rat Fas (87-109aa, YTDRKHYSKCRRCDFEGHGL).

2. Application Data

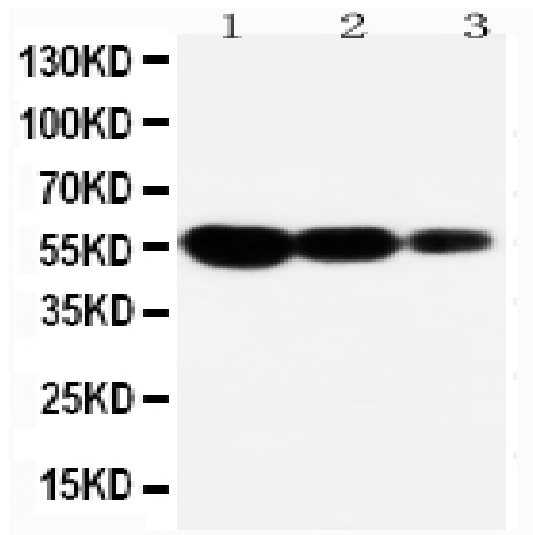
Applications Details

Immunohistochemistry(Paraffin-embedded Section), 0.5-1µg/ml, Mouse, Rat , By Heat
Immunohistochemistry(Frozen Section), 0.5-1µg/ml, Mouse, Rat , -
Western blot, 0.1-0.5µg/ml, Mouse, Rat

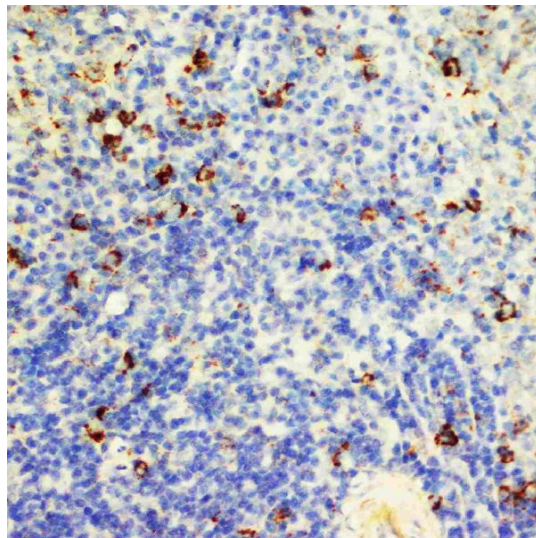
3. Cross Reaction

No cross reactivity with other proteins

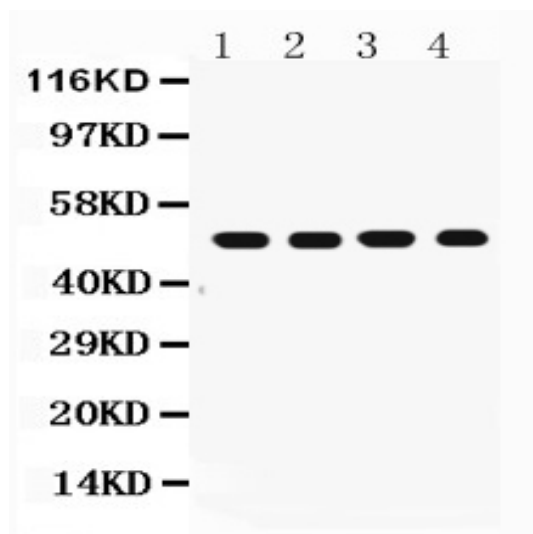
4. Image



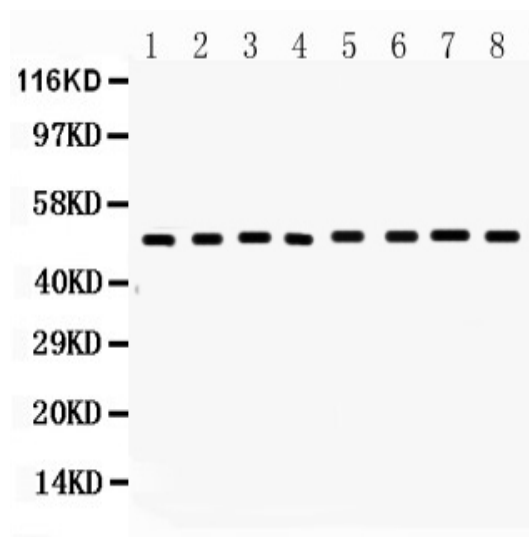
Anti-Fas antibody, PA1119, Western blotting
 Lane 1: Recombinant Mouse FAS Protein 10ng
 Lane 2: Recombinant Mouse FAS Protein 5ng
 Lane 3: Recombinant Mouse FAS Protein 2.5ng



Anti-Fas antibody, PA1119, IHC(P)
 IHC(P): Rat Spleen Tissue Lysate



Western blot analysis of FAS expression in rat liver extract (lane 1), rat spleen extract (lane 2), rat brain extract (lane 3) and rat cardiac muscle extract (lane 4). FAS at 50KD was detected using rabbit anti- FAS Antigen Affinity purified polyclonal antibody (Catalog # PA1119) at 0.5 μ g/mL. The blot was developed using chemiluminescence (ECL) method (Catalog # EK1002).



Western blot analysis of FAS expression in mouse liver extract (lane 1), mouse spleen extract (lane 2), mouse brain extract (lane 3) mouse kidney extract (lane 4), mouse thymus extract (lane 5), mouse lung extract (lane 6), HEPA1-6 whole cell lysates (lane 7) and NIH3T3 whole cell lysates (lane 8). FAS at 50KD was detected using rabbit anti- FAS Antigen Affinity purified polyclonal antibody (Catalog # PA1119) at 0.5 μ g/mL. The blot was developed using chemiluminescence (ECL) method (Catalog # EK1002).

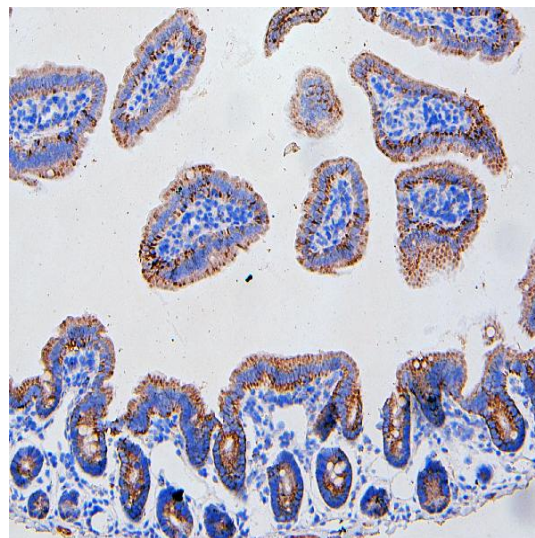


Figure 5. IHC analysis of FAS using anti-FAS antibody (PA1119).

FAS was detected in paraffin-embedded section of mouse intestine tissue. Heat mediated antigen retrieval was performed in citrate buffer (pH6, epitope retrieval solution) for 20 mins. The tissue section was blocked with 10% goat serum. The tissue section was then incubated with 1 μ g/ml rabbit anti-FAS Antibody (PA1119) overnight at 4 $^{\circ}$ C. Biotinylated goat anti-rabbit IgG was used as secondary antibody and incubated for 30 minutes at 37 $^{\circ}$ C. The tissue section was developed using Streptavidin-Biotin-Complex (SABC)(Catalog # SA1022) with DAB as the chromogen.

Approved by:

原杨静

Ms. Yangjing Yue Chief technician

Quality Control System of ELISA

Date: May 13, 2016