

# BOSTER BIOLOGICAL TECHNOLOGY, LTD.

3942 B Valley Ave, Pleasanton, CA, 94566 Phone: 925-485-4527. 888-466-3604 Fax: 925-485-4560

[www.bosterbio.com](http://www.bosterbio.com)

## Certificate of Analysis

Note: this is a sample COA. To get the COA for your lot #, please contact us at [support@bosterbio.com](mailto:support@bosterbio.com)

To whom it may concern,

This letter attests that Anti-CD105/ENG Antibody , catalog # PA1395, is manufactured by Boster Biological Technology., Ltd, through test and assay, we got the following data:

### 1. Immunogen

A synthetic peptide corresponding to a sequence at the N-terminus of human CD105(26-44aa ETVHCDLQPVGPERGEVY).

### 2. Application Data

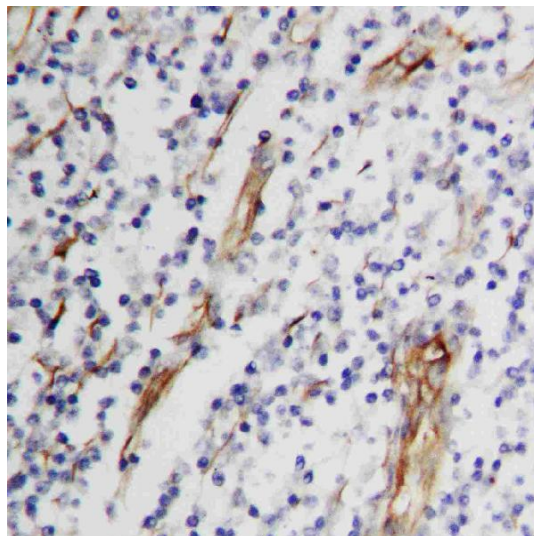
## Applications Details

Immunohistochemistry(Paraffin-embedded Section), 0.5-1 $\mu$ g/ml, Human, By Heat  
Western blot, 0.1-0.5 $\mu$ g/ml, Human

### 3. Cross Reaction

No cross reactivity with other proteins

### 4. Image



Anti-CD105 antibody, PA1395, IHC(P)  
IHC(P): Human Mammary Cancer Tissue

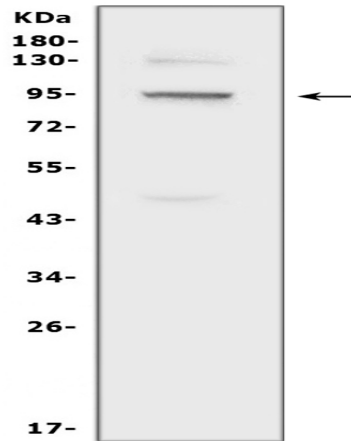


Figure 1. Western blot analysis of CD105 using anti-CD105 antibody (PA1395). Electrophoresis was performed on a 5-20% SDS-PAGE gel at 70V (Stacking gel) / 90V (Resolving gel) for 2-3 hours. The sample well of each lane was loaded with 50ug of sample under reducing conditions.

Lane 1: human HepG2 whole cell lysates

After Electrophoresis, proteins were transferred to a Nitrocellulose membrane at 150mA for 50-90 minutes. Blocked the membrane with 5% Non-fat Milk/ TBS for 1.5 hour at RT. The membrane was incubated with rabbit anti-CD105 antigen affinity purified polyclonal antibody (Catalog # PA1395) at 0.5 µg/mL overnight at 4°C, then washed with TBS-0.1%Tween 3 times with 5 minutes each and probed with a goat anti-rabbit IgG-HRP secondary antibody at a dilution of 1:10000 for 1.5 hour at RT. The signal is developed using an Enhanced Chemiluminescent detection (ECL) kit (Catalog # EK1002) with Tanon 5200 system. A specific band was detected for CD105 at approximately 95KD.

The expected band size for CD105 is at 71KD.

Approved by:

Ms. Yangjing Yue Chief technician

Quality Control System of ELISA

Date: May 13, 2016