

BOSTER BIOLOGICAL TECHNOLOGY, LTD.

3942 B Valley Ave, Pleasanton, CA, 94566 Phone: 925-485-4527. 888-466-3604 Fax: 925-485-4560

www.bosterbio.com

Certificate of Analysis

Note: this is a sample COA. To get the COA for your lot #, please contact us at support@bosterbio.com

To whom it may concern,

This letter attests that Anti-MTA1 Antibody , catalog # PA1483, is manufactured by Boster Biological Technology., Ltd, through test and assay, we got the following data:

1. Immunogen

A synthetic peptide corresponding to a sequence at the C-terminus of human MTA1(676-696aa ETKRAARRPYKPIALRQSQUAL), identical to the related mouse and rat sequences.

2. Application Data

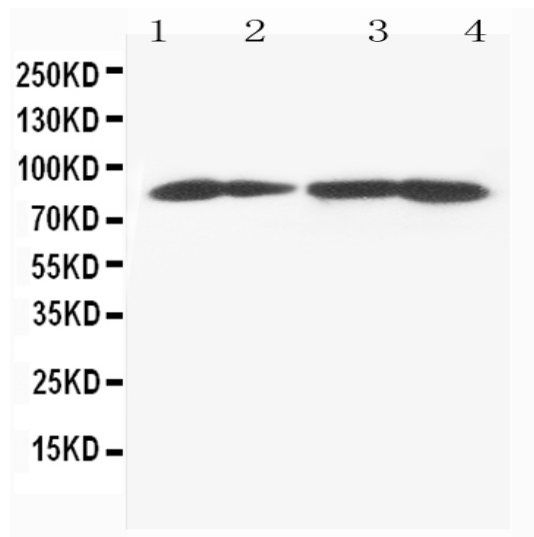
Applications Details

Immunohistochemistry(Frozen Section), 0.5-1µg/ml, Mouse, Rat, Human
Immunohistochemistry(Paraffin-embedded Section), 0.5-1µg/ml, Human, Mouse, Rat, By Heat
Western blot, 0.1-0.5µg/ml, Human, Rat, Mouse

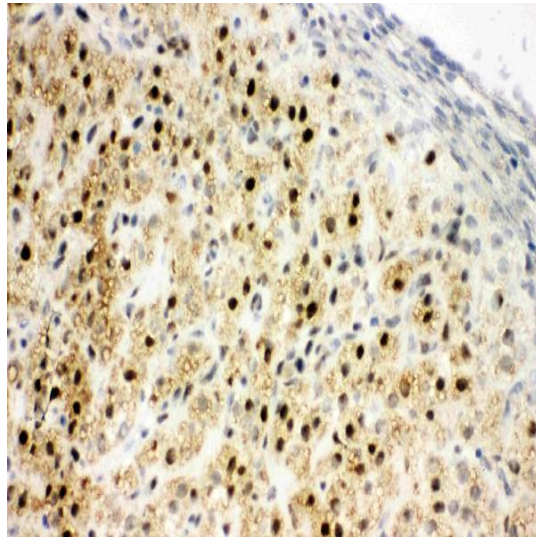
3. Cross Reaction

No cross reactivity with other proteins

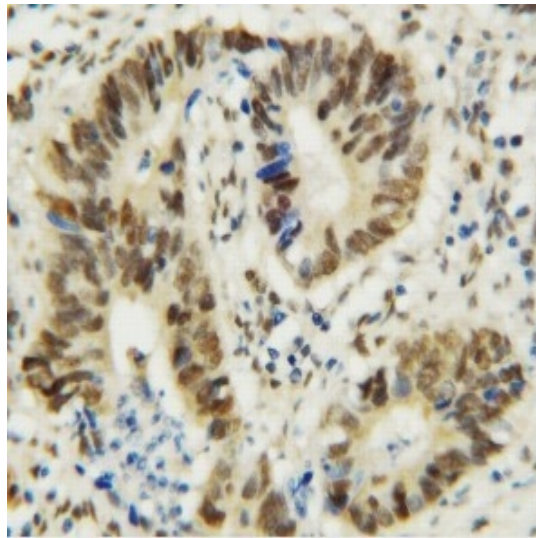
4. Image



Anti-MTA1 antibody, PA1483, Western blotting
Lane 1: MCF-7 Cell Lysate
Lane 2: HELA Cell Lysate
Lane 3: JURKAT Cell Lysate
Lane 4: CEM Cell Lysate



Anti-MTA1 antibody, PA1483, IHC(F)
IHC(F): Rat Ovary Tissue



Anti-MTA1 antibody, PA1483, IHC(P)
IHC(P): Human Rectal Cancer Tissue

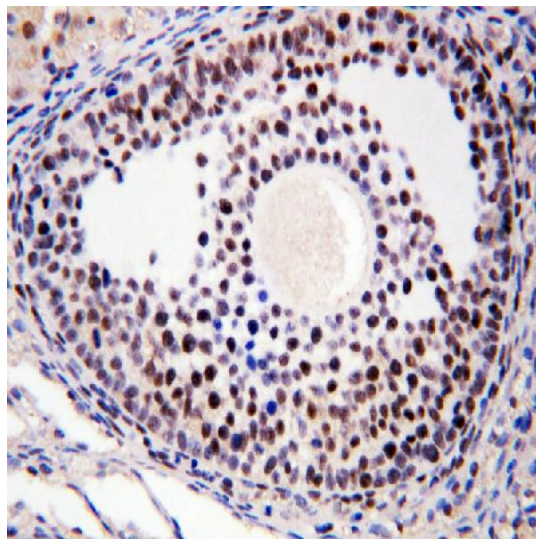


Figure 4. IHC analysis of MTA1 using anti- MTA1 antibody (PA1483).

MTA1 was detected in paraffin-embedded section of rat ovary tissues. Heat mediated antigen retrieval was performed in citrate buffer (pH6, epitope retrieval solution) for 20 mins. The tissue section was blocked with 10% goat serum. The tissue section was then incubated with 1 μ g/ml rabbit anti- MTA1Antibody (PA1483) overnight at 4 $^{\circ}$ C. Biotinylated goat anti-rabbit IgG was used as secondary antibody and incubated for 30 minutes at 37 $^{\circ}$ C. The tissue section was developed using Streptavidin-Biotin-Complex (SABC)(Catalog # SA1022) with DAB as the chromogen.

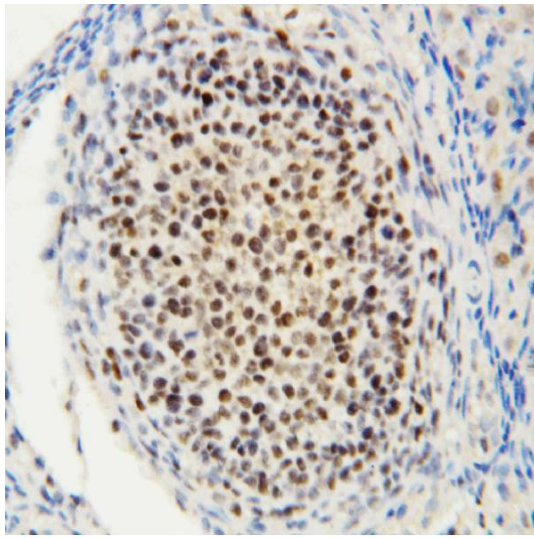


Figure 5. IHC analysis of MTA1 using anti-MTA1 antibody (PA1483).

MTA1 was detected in paraffin-embedded section of rat ovary tissue. Heat mediated antigen retrieval was performed in citrate buffer (pH6, epitope retrieval solution) for 20 mins. The tissue section was blocked with 10% goat serum. The tissue section was then incubated with 1 μ g/ml rabbit anti-MTA1 Antibody (PA1483) overnight at 4 $^{\circ}$ C. Biotinylated goat anti-rabbit IgG was used as secondary antibody and incubated for 30 minutes at 37 $^{\circ}$ C. The tissue section was developed using Streptavidin-Biotin-Complex (SABC)(Catalog # SA1022) with DAB as the chromogen.

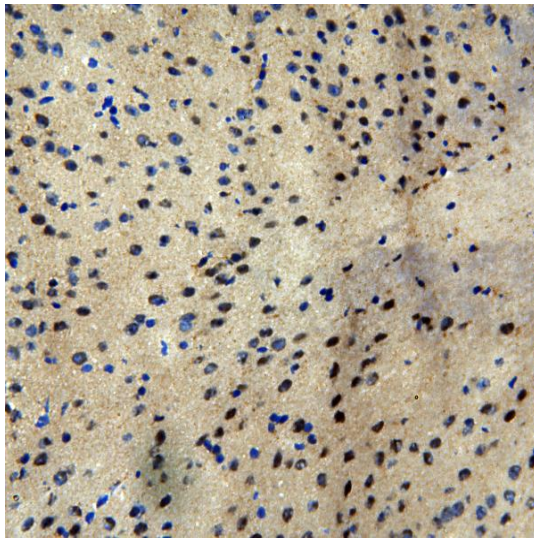


Figure 6. IHC analysis of MTA1 using anti-MTA1 antibody (PA1483).

MTA1 was detected in frozen section of mouse brain tissues. The tissue section was blocked with 10% goat serum. The tissue section was then incubated with 1 μ g/ml rabbit anti-MTA1 Antibody (PA1483) overnight at 4 $^{\circ}$ C. Biotinylated goat anti-rabbit IgG was used as secondary antibody and incubated for 30 minutes at 37 $^{\circ}$ C. The tissue section was developed using Streptavidin-Biotin-Complex (SABC)(Catalog # SA1022) with DAB as the chromogen.

Approved by:

任杨静

Ms. Yangjing Yue Chief technician

Quality Control System of ELISA

Date: May 13, 2016