

# **BOSTER BIOLOGICAL TECHNOLOGY, LTD.**

3942 B Valley Ave, Pleasanton, CA, 94566 Phone: 925-485-4527. 888-466-3604 Fax: 925-485-4560

[www.bosterbio.com](http://www.bosterbio.com)

## **Certificate of Analysis**

Note: this is a sample COA. To get the COA for your lot #, please contact us at support@bosterbio.com

To whom it may concern,

This letter attests that Anti-CD68 Antibody , catalog # PA1518, is manufactured by Boster Biological Technology., Ltd, through test and assay, we got the following data:

### **1. Immunogen**

A synthetic peptide corresponding to a sequence in the middle region of mouse CD68(312-326aa AFCITRRRQSTYQPL), different from the related rat sequence by one amino acid.

### **2. Application Data**

## **Applications Details**

Western blot, 0.1-0.5 $\mu$ g/ml, Rat, Mouse  
Immunohistochemistry(Paraffin-embedded Section), 0.5-1 $\mu$ g/ml, Mouse, Rat, By Heat  
Immunohistochemistry(Frozen Section), 0.5-1 $\mu$ g/ml, Mouse, Rat, -  
Immunofluorescence, 2 $\mu$ g/ml, Rat

### **3. Cross Reaction**

No cross reactivity with other proteins

### **4. Image**

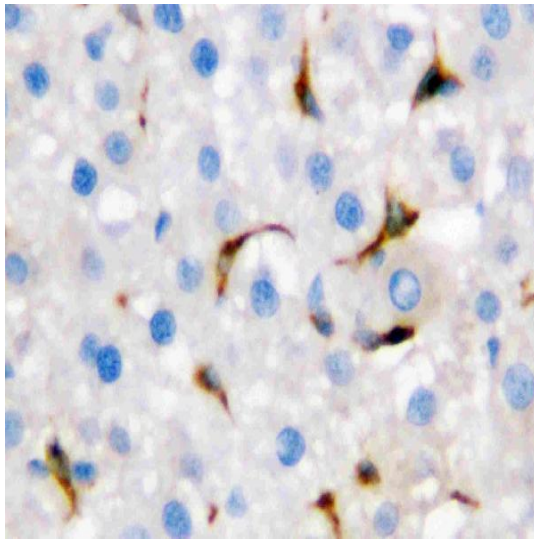


Figure 2. IHC analysis of CD68 using anti- CD68 antibody (PA1518).

CD68 was detected in paraffin-embedded section of rat liver tissues. Heat mediated antigen retrieval was performed in citrate buffer (pH6, epitope retrieval solution) for 20 mins. The tissue section was blocked with 10% goat serum. The tissue section was then incubated with 1½g/ml rabbit anti- CD68 Antibody (PA1518) overnight at 4°C. Biotinylated goat anti-rabbit IgG was used as secondary antibody and incubated for 30 minutes at 37°C. The tissue section was developed using Streptavidin-Biotin-Complex (SABC)(Catalog # SA1022) with DAB as the chromogen.

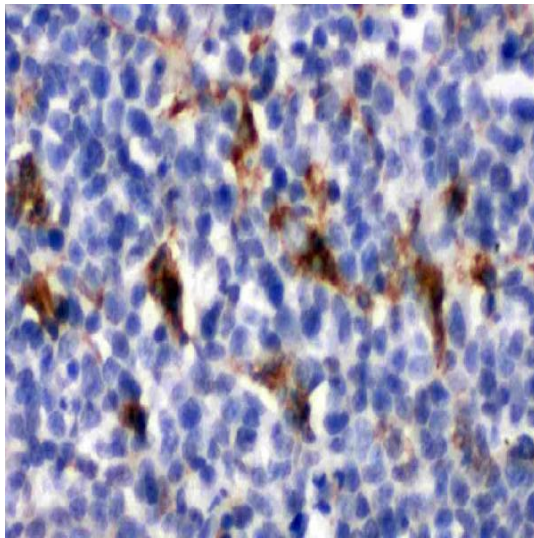


Figure 3. IHC analysis of CD68 using anti- CD68 antibody (PA1518).

CD68 was detected in paraffin-embedded section of Rat Spleen tissues. Heat mediated antigen retrieval was performed in citrate buffer (pH6, epitope retrieval solution) for 20 mins. The tissue section was blocked with 10% goat serum. The tissue section was then incubated with 1½g/ml rabbit anti- CD68 Antibody (PA1518) overnight at 4°C. Biotinylated goat anti-rabbit IgG was used as secondary antibody and incubated for 30 minutes at 37°C. The tissue section was developed using Streptavidin-Biotin-Complex (SABC)(Catalog # SA1022) with DAB as the chromogen.

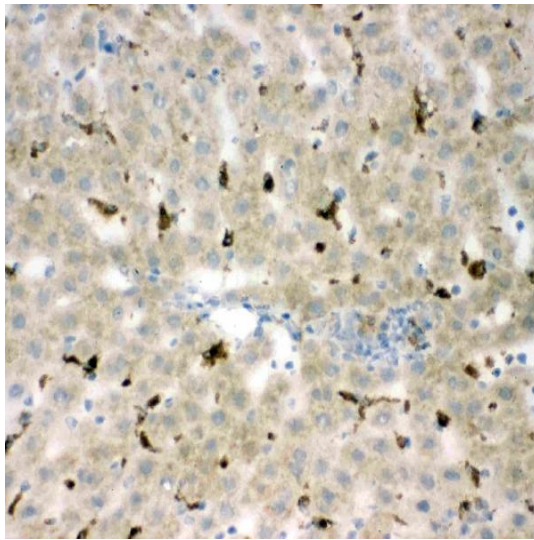


Figure 4. IHC analysis of CD68 using anti- CD68 antibody (PA1518). CD68 was detected in paraffin-embedded section of Mouse Liver tissues. Heat mediated antigen retrieval was performed in citrate buffer (pH6, epitope retrieval solution) for 20 mins. The tissue section was blocked with 10% goat serum. The tissue section was then incubated with 1 $\mu$ g/ml rabbit anti- CD68 Antibody (PA1518) overnight at 4 $^{\circ}$ C. Biotinylated goat anti-rabbit IgG was used as secondary antibody and incubated for 30 minutes at 37 $^{\circ}$ C. The tissue section was developed using Streptavidin-Biotin-Complex (SABC)(Catalog # SA1022) with DAB as the chromogen.

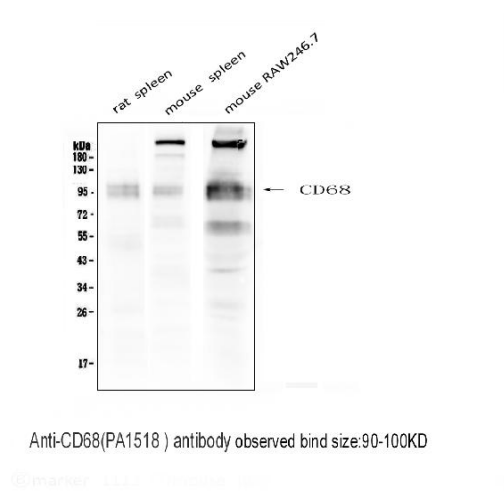


Figure 1. Western blot analysis of CD68 using anti- CD68 antibody (PA1518). Electrophoresis was performed on a 5-20% SDS-PAGE gel at 70V (Stacking gel) / 90V (Resolving gel) for 2-3 hours. The sample well of each lane was loaded with 50ug of sample under reducing conditions.

- Lane 1: Rat Spleen Tissue Lysate
- Lane 2: Mouse Spleen Tissue Lysate
- Lane 3: Mouse RAW246.7 Tissue Lysate

After Electrophoresis, proteins were transferred to a Nitrocellulose membrane at 150mA for 50-90 minutes. Blocked the membrane with 5% Non-fat Milk/ TBS for 1.5 hour at RT. The membrane was incubated with rabbit anti- CD68 antigen affinity purified polyclonal antibody (Catalog # PA1518) at 0.5  $\mu$ g/mL overnight at 4 $^{\circ}$ C, then washed with TBS-0.1%Tween 3 times with 5 minutes each and probed with a goat anti-rabbit IgG-HRP secondary antibody at a dilution of 1:10000 for 1.5 hour at RT. The signal is developed using an Enhanced Chemiluminescent detection (ECL) kit (Catalog # EK1002) with Tanon 5200 system.

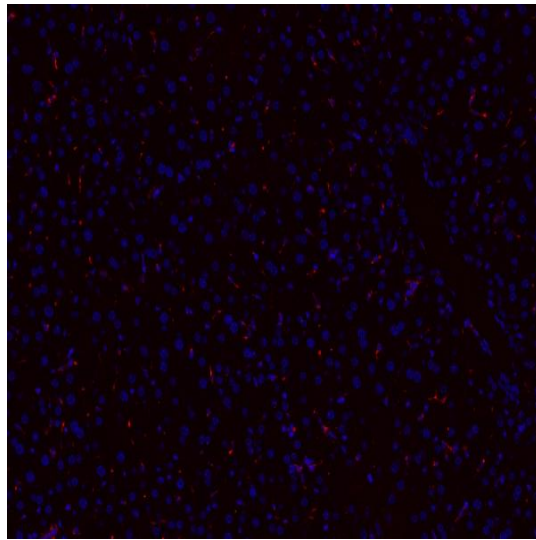


Figure 5. IF analysis of CD68 using anti- CD68 antibody (PA1518)

CD68 was detected in paraffin-embedded section of rat liver tissues. Heat mediated antigen retrieval was performed in citrate buffer (pH6, epitope retrieval solution ) for 20 mins. The tissue section was blocked with 10% goat serum. The tissue section was then incubated with 1 $\frac{1}{4}$ g/mL rabbit anti- CD68 Antibody (PA1518) overnight at 4 $\hat{\text{A}}$  $^{\circ}$ C. Cy3 Conjugated Goat Anti-Rabbit IgG (BA1032) was used as secondary antibody at 1:100 dilution and incubated for 30 minutes at 37 $\hat{\text{A}}$  $^{\circ}$ C. The section was counterstained with DAPI. Visualize using a fluorescence microscope and filter sets appropriate for the label used.

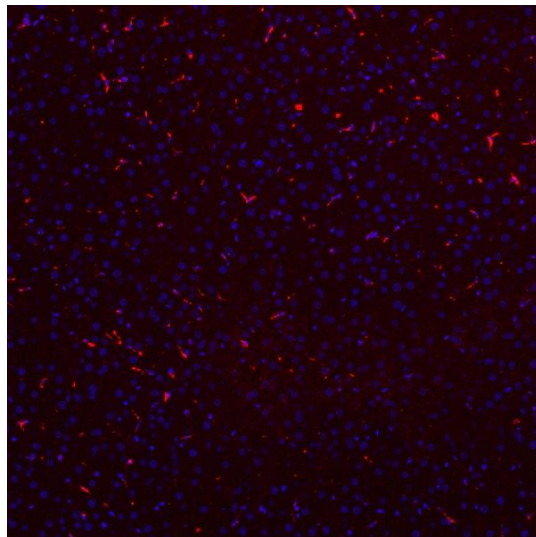


Figure 6. IF analysis of CD68 using anti- CD68 antibody (PA1518)

CD68 was detected in paraffin-embedded section of rat liver tissues. Heat mediated antigen retrieval was performed in citrate buffer (pH6, epitope retrieval solution ) for 20 mins. The tissue section was blocked with 10% goat serum. The tissue section was then incubated with 1 $\frac{1}{4}$ g/mL rabbit anti- CD68 Antibody (PA1518) overnight at 4 $\hat{\text{A}}$  $^{\circ}$ C. Cy3 Conjugated Goat Anti-Rabbit IgG (BA1032) was used as secondary antibody at 1:100 dilution and incubated for 30 minutes at 37 $\hat{\text{A}}$  $^{\circ}$ C. The section was counterstained with DAPI. Visualize using a fluorescence microscope and filter sets appropriate for the label used.

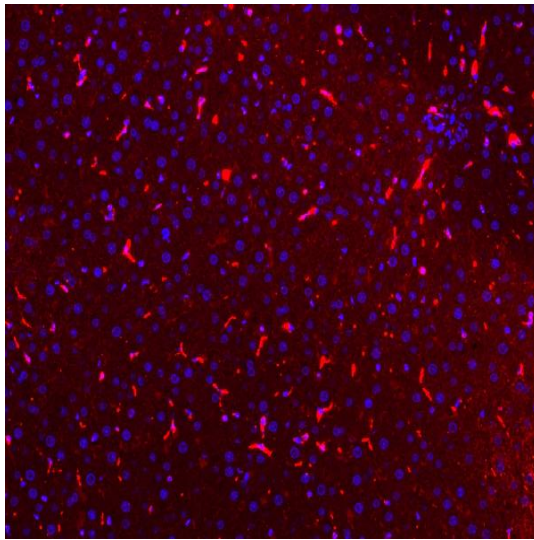


Figure 7. IF analysis of CD68 using anti- CD68 antibody (PA1518) CD68 was detected in paraffin-embedded section of mouse liver tissues. Heat mediated antigen retrieval was performed in citrate buffer (pH6, epitope retrieval solution ) for 20 mins. The tissue section was blocked with 10% goat serum. The tissue section was then incubated with 1 $\mu$ g/mL rabbit anti- CD68 Antibody (PA1518) overnight at 4 $^{\circ}$ C. Cy3 Conjugated Goat Anti-Rabbit IgG (BA1032) was used as secondary antibody at 1:100 dilution and incubated for 30 minutes at 37 $^{\circ}$ C. The section was counterstained with DAPI. Visualize using a fluorescence microscope and filter sets appropriate for the label used.

Approved by:

A handwritten signature in blue ink, consisting of three Chinese characters: 岳杨静 (Yue Yangjing).

Ms. Yangjing Yue Chief technician

Quality Control System of ELISA

Date: May 13, 2016