

BOSTER BIOLOGICAL TECHNOLOGY, LTD.

3942 B Valley Ave, Pleasanton, CA, 94566 Phone: 925-485-4527. 888-466-3604 Fax: 925-485-4560

www.bosterbio.com

Certificate of Analysis

Note: this is a sample COA. To get the COA for your lot #, please contact us at support@bosterbio.com

To whom it may concern,

This letter attests that Anti-Lamin B2/LMNB2 Antibody , catalog # PA1636, is manufactured by Boster Biological Technology., Ltd, through test and assay, we got the following data:

1. Immunogen

A synthetic peptide corresponding to a sequence at the C-terminus of human Lamin B2(580-597aa EEDLFHQGDPRTTSRGC), identical to the related rat and mouse sequences.

2. Application Data

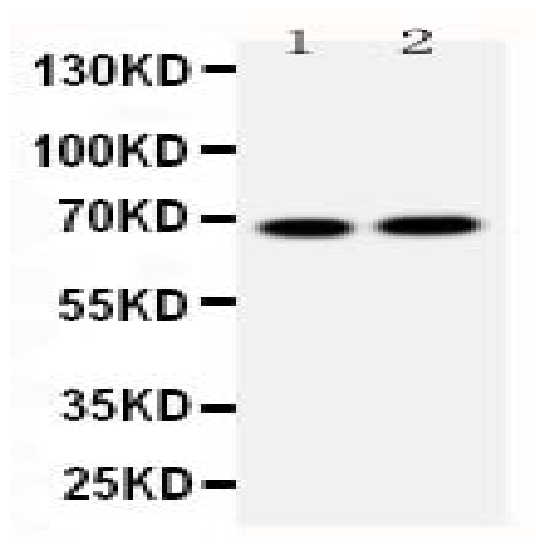
Applications Details

Immunohistochemistry(Frozen Section), 0.5-1µg/ml, Rat, Human, Mouse
Immunohistochemistry(Paraffin-embedded Section), 0.5-1µg/ml, Human, Rat, Mouse, By Heat
Western blot, 0.1-0.5µg/ml, Human, Mouse, Rat

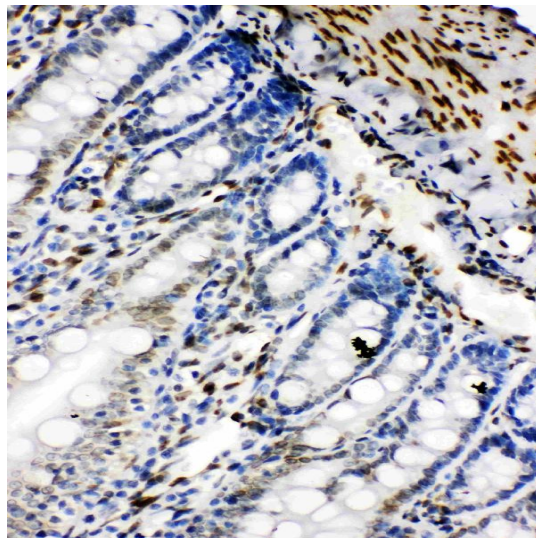
3. Cross Reaction

No cross reactivity with other proteins

4. Image



Anti-Lamin B2 antibody, PA1636, Western blotting
Lane 1: HELA Cell Lysate
Lane 2: U87 Cell Lysate



Anti-Lamin B2 antibody, PA1636, IHC(P)
IHC(P): Rat Intestine Tissue

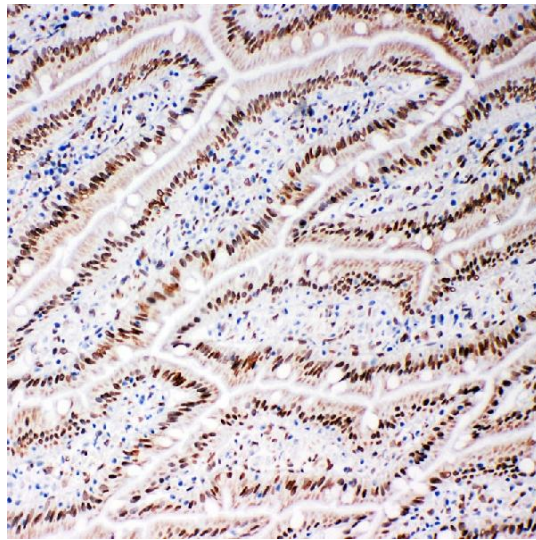


Figure 3. IHC analysis of Lamin B2 using anti- Lamin B2 antibody (PA1636). Lamin B2 was detected in frozen section of rat intestine tissues. The tissue section was blocked with 10% goat serum. The tissue section was then incubated with 1 μ g/ml rabbit anti- Lamin B2 Antibody (PA1636) overnight at 4 $^{\circ}$ C. Biotinylated goat anti-rabbit IgG was used as secondary antibody and incubated for 30 minutes at 37 $^{\circ}$ C. The tissue section was developed using Streptavidin-Biotin-Complex (SABC)(Catalog # SA1022) with DAB as the chromogen.

Approved by:

Ms. Yangjing Yue Chief technician

Quality Control System of ELISA

Date: May 13, 2016