

# **BOSTER BIOLOGICAL TECHNOLOGY, LTD.**

3942 B Valley Ave, Pleasanton, CA, 94566 Phone: 925-485-4527. 888-466-3604 Fax: 925-485-4560

[www.bosterbio.com](http://www.bosterbio.com)

## **Certificate of Analysis**

Note: this is a sample COA. To get the COA for your lot #, please contact us at support@bosterbio.com

To whom it may concern,

This letter attests that Anti-MCM2 Antibody , catalog # PA1711, is manufactured by Boster Biological Technology., Ltd, through test and assay, we got the following data:

### **1. Immunogen**

A synthetic peptide corresponding to a sequence at the C-terminus of mouse MCM2(884-904aa DLFKFNKFSRDLKRKLILQQF), different from the related rat sequence by one amino acid.

### **2. Application Data**

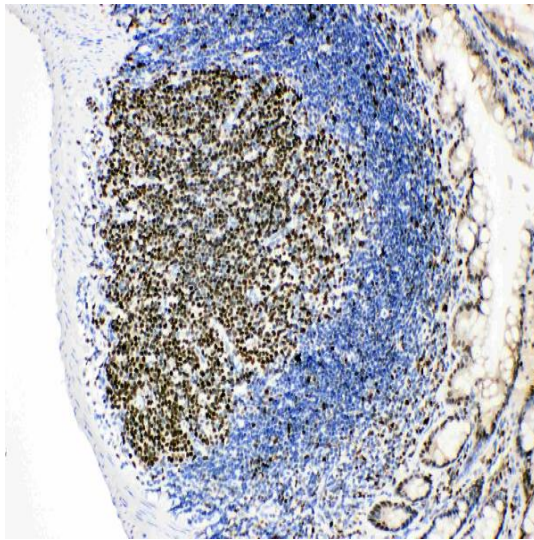
## **Applications Details**

Immunocytochemistry , 0.5-1 $\mu$ g/ml, Mouse, Rat  
Immunohistochemistry(Paraffin-embedded Section), 0.5-1 $\mu$ g/ml, Mouse, Rat, By Heat  
Western blot, 0.1-0.5 $\mu$ g/ml, Mouse, Rat

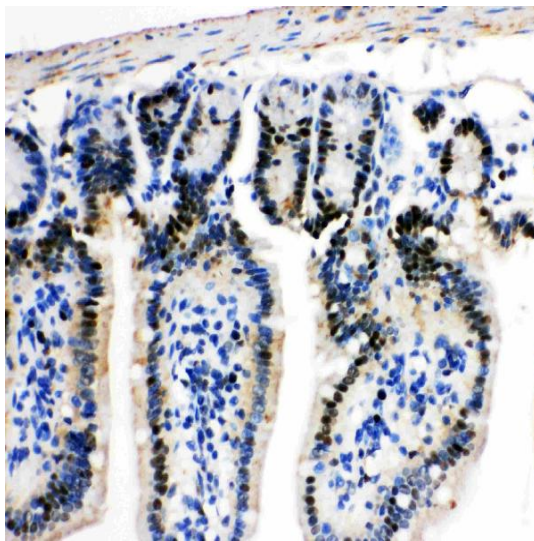
### **3. Cross Reaction**

No cross reactivity with other proteins

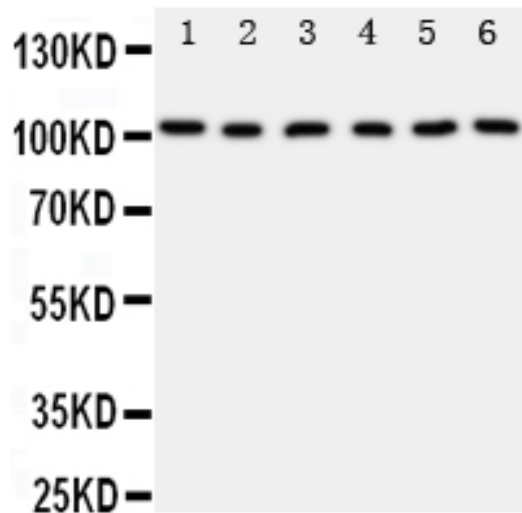
### **4. Image**



Anti-MCM2 antibody, PA1711, IHC(P)  
IHC(P): Rat Intestinal Lymphocyte Tissue

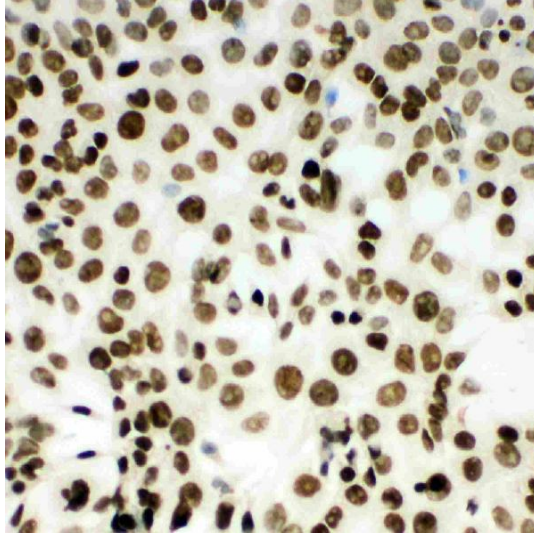


Anti-MCM2 antibody, PA1711, IHC(P)  
IHC(P): Mouse Intestine Tissue

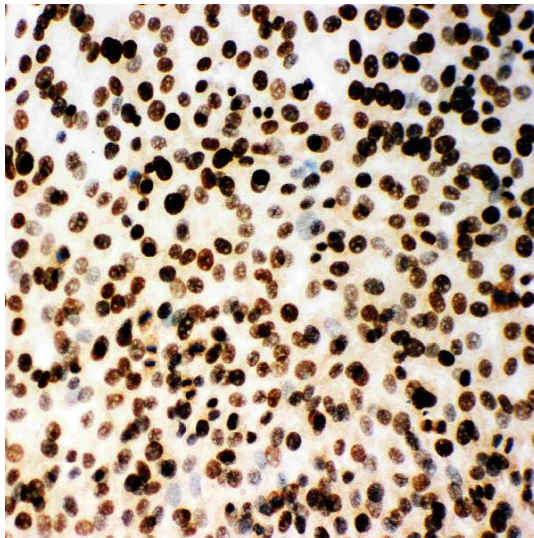


Anti-MCM2 antibody, PA1711, Western blotting

All lanes: Anti MCM2 (PA1711) at 0.5ug/ml  
Lane 1: Rat Testis Tissue Lysate at 50ug  
Lane 2: Rat Kidney Tissue Lysate at 50ug  
Lane 3: Mouse Intestine Tissue Lysate at 50ug  
Lane 4: Mouse Testis Tissue Lysate at 50ug  
Lane 5: Mouse Ovary Tissue Lysate at 50ug  
Lane 6: Mouse Kidney Tissue Lysate at 50ug  
Predicted bind size: 102KD  
Observed bind size: 102KD



Anti-MCM2 antibody, PA1711, ICC  
ICC: HEPA Cell



Anti-MCM2 antibody, PA1711, ICC  
ICC: NIH3T3 Cell

Approved by:

原杨静

Ms. Yangjing Yue Chief technician

Quality Control System of ELISA

Date: May 13, 2016