

# **BOSTER BIOLOGICAL TECHNOLOGY, LTD.**

3942 B Valley Ave, Pleasanton, CA, 94566 Phone: 925-485-4527. 888-466-3604 Fax: 925-485-4560

[www.bosterbio.com](http://www.bosterbio.com)

## **Certificate of Analysis**

Note: this is a sample COA. To get the COA for your lot #, please contact us at support@bosterbio.com

To whom it may concern,

This letter attests that Anti-Glucose Transporter 5 GLUT5/SLC2A5 Antibody , catalog # PA1737, is manufactured by Boster Biological Technology., Ltd, through test and assay, we got the following data:

### **1. Immunogen**

A synthetic peptide corresponding to a sequence in the middle region of mouse SLC2A5 (232-251aa ALQTLRGWKDVHLEMEEIRK), different from the related rat sequence by two amino acids.

### **2. Application Data**

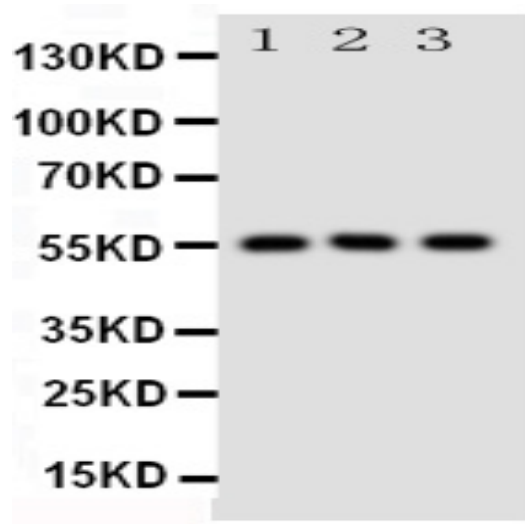
## **Applications Details**

Immunohistochemistry(Paraffin-embedded Section), 0.5-1µg/ml, Mouse, Rat, By Heat  
Immunohistochemistry(Frozen Section), 0.5-1µg/ml, Rat, Mouse  
Western blot, 0.1-0.5µg/ml, Mouse, Rat

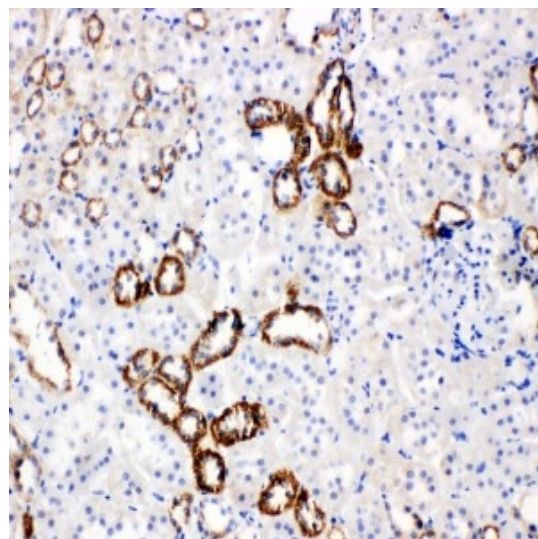
### **3. Cross Reaction**

No cross reactivity with other proteins

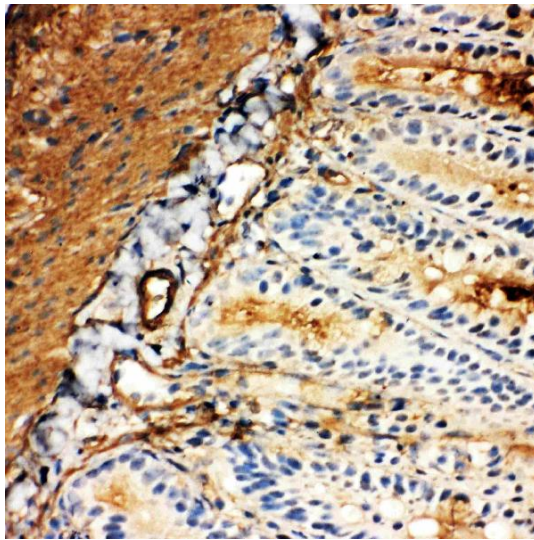
### **4. Image**



Anti-SLC2A5 antibody, PA1737, Western blotting  
All lanes: Anti SLC2A5 (PA1737) at 0.5ug/ml  
Lane 1: Rat Kidney Tissue Lysate at 50ug  
Lane 2: Rat Liver Tissue Lysate at 50ug  
Lane 3: Mouse Kidney Tissue Lysate at 50ug  
Predicted bind size: 55KD  
Observed bind size: 55KD



Anti-SLC2A5 antibody, PA1737, IHC(P)  
IHC(P): Rat Kidney Tissue



Anti-SLC2A5 antibody, PA1737, IHC(F)  
IHC(F): Rat Intestine Tissue

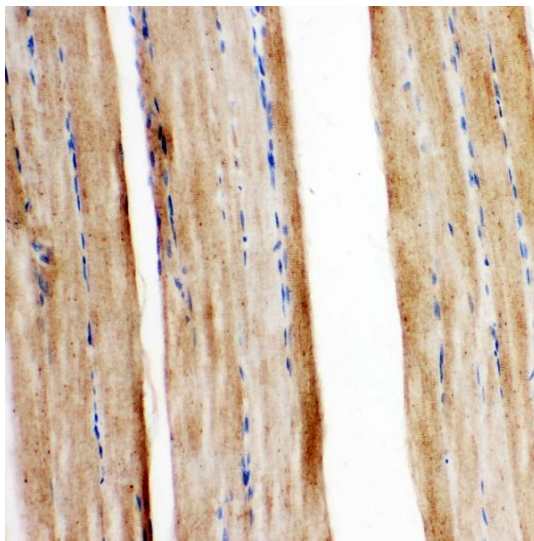


Figure 4. IHC analysis of GLUT5 using anti- GLUT5 antibody (PA1737).

GLUT5 was detected in paraffin-embedded section of mouse ggj3249 tissues. Heat mediated antigen retrieval was performed in citrate buffer (pH6, epitope retrieval solution) for 20 mins. The tissue section was blocked with 10% goat serum. The tissue section was then incubated with 1½g/ml rabbit anti- GLUT5 Antibody (PA1737) overnight at 4°C. Biotinylated goat anti-rabbit IgG was used as secondary antibody and incubated for 30 minutes at 37°C. The tissue section was developed using Streptavidin-Biotin-Complex (SABC)(Catalog # SA1022) with DAB as the chromogen.

Approved by:

Ms. Yangjing Yue Chief technician

# Quality Control System of ELISA

Date: May 13, 2016