

# **BOSTER BIOLOGICAL TECHNOLOGY, LTD.**

3942 B Valley Ave, Pleasanton, CA, 94566 Phone: 925-485-4527. 888-466-3604 Fax: 925-485-4560

[www.bosterbio.com](http://www.bosterbio.com)

## **Certificate of Analysis**

Note: this is a sample COA. To get the COA for your lot #, please contact us at support@bosterbio.com

To whom it may concern,

This letter attests that Anti-Kallikrein 6/KLK6 Antibody , catalog # PA1767, is manufactured by Boster Biological Technology., Ltd, through test and assay, we got the following data:

### **1. Immunogen**

A synthetic peptide corresponding to a sequence at the C-terminus of human Kallikrein 6(227-244aa YTNVCRYTNWIKTIQAK).

### **2. Application Data**

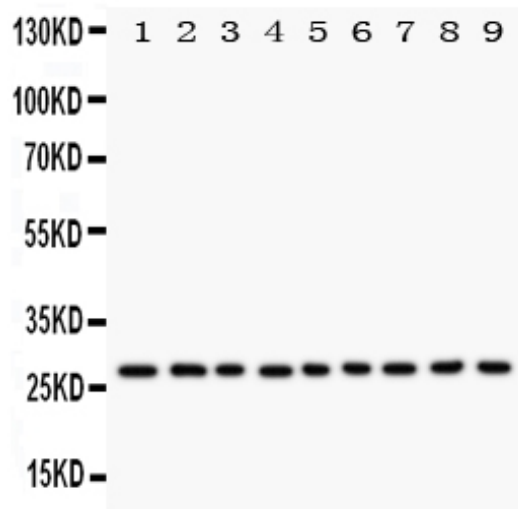
## **Applications Details**

Immunocytochemistry , 0.5-1 $\mu$ g/ml, Human, -  
Immunohistochemistry(Paraffin-embedded Section), 0.5-1 $\mu$ g/ml, Human, By Heat  
Western blot, 0.1-0.5 $\mu$ g/ml, Human

### **3. Cross Reaction**

No cross reactivity with other proteins

### **4. Image**



Anti-Kallikrein 6 antibody, PA1767, Western blotting

All lanes: Anti Kallikrein 6 (PA1767) at 0.5ug/ml

Lane 1: MCF-7 Whole Cell Lysate at 40ug

Lane 2: HELA Whole Cell Lysate at 40ug

Lane 3: MM231 Whole Cell Lysate at 40ug

Lane 4: MM453 Whole Cell Lysate at 40ug

Lane 5: A549 Whole Cell Lysate at 40ug

Lane 6: SMMC Whole Cell Lysate at 40ug

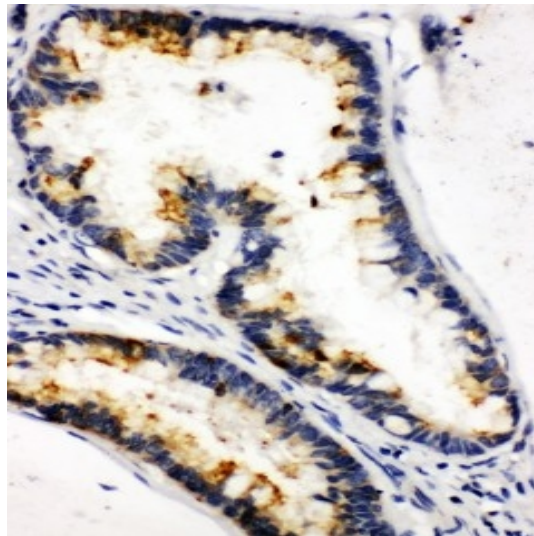
Lane 7: COLO320 Whole Cell Lysate at 40ug

Lane 8: SW620 Whole Cell Lysate at 40ug

Lane 9: HT1080 Whole Cell Lysate at 40ug

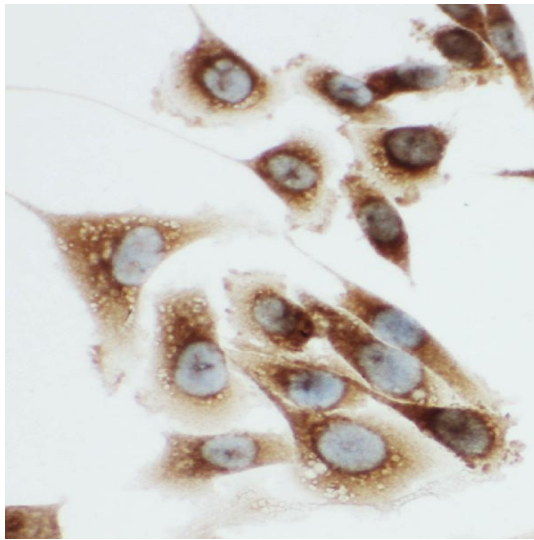
Predicted bind size: 27KD

Observed bind size: 27KD



Anti-Kallikrein 6 antibody, PA1767, IHC(P)

IHC(P): Human Intestinal Cancer Tissue



Anti-Kallikrein 6 antibody, PA1767, ICC  
ICC: PC-3 Cell

Approved by:

A handwritten signature in blue ink, reading '岳杨静' (Yue Yangjing).

Ms. Yangjing Yue Chief technician

Quality Control System of ELISA

Date: May 13, 2016