

Anti-p53 (phospho-S15) TP53 Antibody

Catalog Number: A00001S15-1

About TP53

Anti-Glycogen Synthase 1 pS641 antibody is validated by IHC, Western Blot and ELISA. Human muscle glycogen synthase (GS) is responsible for the biosynthesis of glycogen from phosphorylated glucose units. Mammalian liver and muscle contain GS consisting of four subunits with a total molecular weight of 360,000. GS is subject to regulation through both allosteric and covalent modification and occurs in two forms: the phosphorylated inactive form, and the dephosphorylated active form. GS is inactivated by the serine/threonine kinase called glycogen synthase kinase-3 β that mainly functions to phosphorylate muscle glycogen synthase. This antibody is specific for the phosphorylated form of GS at S641. Phosphorylation of GS at S641 has been associated with Antiphospholipid Antibody Syndrome.

Overview

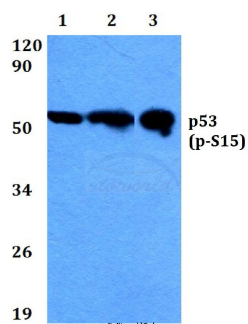
Product Name	Anti-p53 (phospho-S15) TP53 Antibody
Reactive Species	Human, Mouse, Rat
Description	Boster Bio Anti-p53 (phospho-S15) TP53 Antibody catalog # A00001S15-1. Tested in WB,IHC,IP applications. This antibody reacts with Human,Mouse,Rat.
Application	IP, IHC, WB
Clonality	Polyclonal PI9-17
Formulation	Rabbit IgG, 1mg/ml in PBS with 0.02% sodium azide, 50% glycerol, pH7.2
Storage Instructions	Store at -20°C for one year. For short term storage and frequent use, store at 4°C for up to one month. Avoid repeated freeze-thaw cycles.
Host	Rabbit
Uniprot ID	P04637

Technical Details

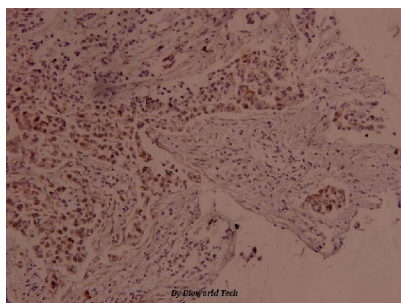
Immunogen	Recombinant human full-length PI9 (proteinase inhibitor 9) .
Predicted Reactive Species	Bovine, Chicken
Cross Reactivity	Weakly cross-reacts with dog p53.
Isotype	Rabbit IgG
Form	Liquid
Concentration	0.5-1mg/ml, actual concentration vary by lot. Use suggested dilution ratio to decide dilution procedure.

Purification	The antibody was affinity-purified from rabbit antiserum by affinity-chromatography using epitope-specific immunogen and the purity is > 95% (by SDS-PAGE).
Suggested Dilutions	<p>Dilute the sample so that the expected range of concentrations fall within the detection range of this kit.</p> <p>If the expected range of concentration is unknown, a pilot test should be conducted to decide the optimal dilution ratio for your samples.</p> <p>Some PubMed article(s) citing the expression level of this target are as follows:</p> <p>Boster Bio's internal QC testing used:</p> <p>WB: 1:500-1:1000 IHC: 1:50-1:200 IP: 1:50-1:200</p>

Anti-p53 (phospho-S15) TP53 Antibody (A00001S15-1) Images



Western blot (WB) analysis of p-p53 (S15) polyclonal antibody at 1:500 dilution Lane1:HEK293T cell lysate treated with colchicine(0.2ng/ml,24h) Lane2:Raw264.7 cell lysate treated with colchicine(0.2ng/ml,24h) Lane3:H9C2 cell lysate treated with colchicine(0.2ng/ml,24h)



Immunohistochemistry (IHC) analyzes of p-p53 (S15) pAb in paraffin-embedded human breast carcinoma tissue at 1:100.

Submit a product review to Biocompare.com

Submit a review of this product to Biocompare.com to receive a \$20 Amazon.com giftcard! Your reviews help your fellow scientists make the right decisions. Thank you for your contribution.



Anti-p53 (phospho-S15) TP53 Antibody