

Anti-Phospho-p53 (T18) TP53 Antibody

Catalog Number: A00001T18

About TP53

Anti-Glycogen Synthase 1 pS641 antibody is validated by IHC, Western Blot and ELISA. Human muscle glycogen synthase (GS) is responsible for the biosynthesis of glycogen from phosphorylated glucose units. Mammalian liver and muscle contain GS consisting of four subunits with a total molecular weight of 360,000. GS is subject to regulation through both allosteric and covalent modification and occurs in two forms: the phosphorylated inactive form, and the dephosphorylated active form. GS is inactivated by the serine/threonine kinase called glycogen synthase kinase-3 β that mainly functions to phosphorylate muscle glycogen synthase. This antibody is specific for the phosphorylated form of GS at S641. Phosphorylation of GS at S641 has been associated with Antiphospholipid Antibody Syndrome.

Overview

Product Name	Anti-Phospho-p53 (T18) TP53 Antibody
Reactive Species	Human, Mouse, Rat
Description	Boster Bio Anti-Phospho-p53 (T18) TP53 Antibody catalog # A00001T18. Tested in ELISA, WB applications. This antibody reacts with Human, Mouse, Rat.
Application	ELISA, WB
Clonality	Polyclonal PI9-17
Formulation	Liquid in PBS containing 50% glycerol, 0.5% BSA and 0.02% sodium azide.
Storage Instructions	Store at -20°C for one year. For short term storage and frequent use, store at 4°C for up to one month. Avoid repeated freeze-thaw cycles.
Host	Rabbit
Uniprot ID	P04637

Technical Details

Immunogen	Synthesized peptide derived from human p53 around the phosphorylation site of T18.
Predicted Reactive Species	Bovine, Chicken
Cross Reactivity	Weakly cross-reacts with dog p53.
Isotype	IgG
Form	Liquid
Concentration	1 mg/ml
Purification	The antibody was affinity-purified from rabbit antiserum by affinity-chromatography using epitope-

	specific immunogen.
Suggested Dilutions	<p>Dilute the sample so that the expected range of concentrations fall within the detection range of this kit.</p> <p>If the expected range of concentration is unknown, a pilot test should be conducted to decide the optimal dilution ratio for your samples.</p> <p>Some PubMed article(s) citing the expression level of this target are as follows:</p> <p>Boster Bio's internal QC testing used:</p> <p>WB 1:500-1:2000</p> <p>ELISA 1:20000</p>

Anti-Phospho-p53 (T18) TP53 Antibody (A00001T18) Images

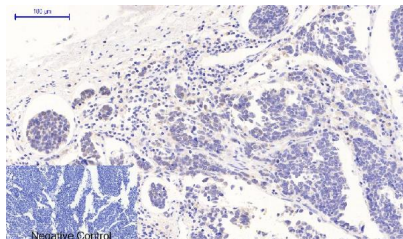
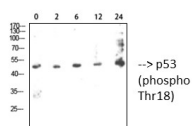


Figure 2. Immunohistochemistry validation of TP53 using Anti-Phospho-p53 (T18) TP53 Antibody (A00001T18).

Immunohistochemical analysis of human-lung-cancer tissue.
Anti-Phospho-p53 (T18) at 1:200 (4°C)



Western Blot (WB) analysis of specific drug treated 293T cells using p53 (phospho Thr18) Polyclonal Antibody (STJ90372)

Figure 1. Western blotting validation for Anti-Phospho-p53 (T18) TP53 Antibody A00001T18

Western blot (WB) analysis of p53 (phospho Thr18) polyclonal antibody.
Electrophoresis was performed on a SDS-PAGE gel. To determine SDS-PAGE gel concentration

Submit a product review to Biocompare.com

Submit a review of this product to Biocompare.com to receive a \$20 Amazon.com giftcard! Your reviews help your fellow scientists make the right decisions. Thank you for your contribution.



Anti-Phospho-p53 (T18) TP53 Antibody