

Anti-mTOR (S2442) Antibody

Catalog Number: A00003S2442

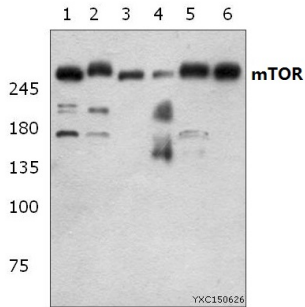
Overview

Product Name	Anti-mTOR (S2442) Antibody
Reactive Species	Human, Mouse, Rat
Description	Boster Bio Anti-mTOR (S2442) Antibody catalog # A00003S2442. Tested in WB,IHC,IP applications. This antibody reacts with Human,Mouse,Rat.
Application	IP, IHC, WB
Clonality	Polyclonal
Formulation	Rabbit IgG, 1mg/ml in PBS with 0.02% sodium azide, 50% glycerol, pH7.2
Storage Instructions	Store at -20°C for one year. For short term storage and frequent use, store at 4°C for up to one month. Avoid repeated freeze-thaw cycles.
Host	Rabbit
Uniprot ID	P42345

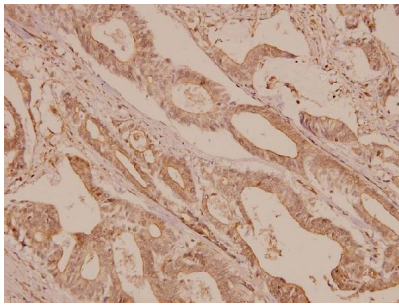
Technical Details

Immunogen	Synthetic peptide, corresponding to amino acids 2430-2480 of Human mTOR.
Isotype	IgG
Form	Liquid
Concentration	1 mg/ml
Purification	The antibody was affinity-purified from rabbit antiserum by affinity-chromatography using epitope-specific immunogen and the purity is > 95% (by SDS-PAGE).
Suggested Dilutions	WB: 1:500-1:1000 IHC: 1:50-1:200 IP: 1:50-1:200

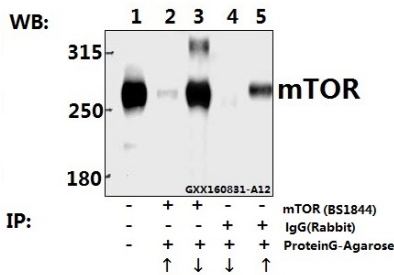
Anti-mTOR (S2442) Antibody (A00003S2442) Images



Western blot (WB) analysis of mTOR (S2442) at 1:500 dilution. Lane 1: NIH-3T3 whole cell lysate (40ug); Lane 2: HEK293T whole cell lysate (40ug); Lane 3: H9C2 whole cell lysate (40ug); Lane 4: HeLa whole cell lysate (40ug); Lane 5: MCF-7 whole cell lysate (40ug); Lane 6: HepG2 whole cell lysate (40ug).



Immunohistochemistry (IHC) analysis of mTOR (S2442) pAb in paraffin-embedded human colorectal carcinoma tissue at 1:50.



Immunoprecipitation of SGC7901 cell lysates using mTOR (S2442) pAb (Sepharose Bead Conjugate) #BD0048 (lane 2 and lane 3) and Nonspecific IgG Control (Sepharose Bead Conjugate) #BD0048 (lane 4 and lane 5). Lane 1 is 30% input. The western blot was probed using mTOR (S2442) pAb #BS1844. "↑" (supernatant); "↓" (deposition).

Submit a product review to Biocompare.com

Submit a review of this product to Biocompare.com to receive a \$20 Amazon.com giftcard! Your reviews help your fellow scientists make the right decisions. Thank you for your contribution.



Anti-mTOR (S2442) Antibody

For Research Use Only. Not for use in diagnostic procedures.