

## Anti-Catenin-Beta (phospho-S33/S37/T41) CTNNB1 Antibody

Catalog Number: A00004S33S37T41

### About CTNNB1

Anti-Glycogen Synthase 1 pS641 antibody is validated by IHC, Western Blot and ELISA. Human muscle glycogen synthase (GS) is responsible for the biosynthesis of glycogen from phosphorylated glucose units. Mammalian liver and muscle contain GS consisting of four subunits with a total molecular weight of 360,000. GS is subject to regulation through both allosteric and covalent modification and occurs in two forms: the phosphorylated inactive form, and the dephosphorylated active form. GS is inactivated by the serine/threonine kinase called glycogen synthase kinase-3 $\beta$  that mainly functions to phosphorylate muscle glycogen synthase. This antibody is specific for the phosphorylated form of GS at S641. Phosphorylation of GS at S641 has been associated with Antiphospholipid Antibody Syndrome.

### Overview

Product Name	Anti-Catenin-Beta (phospho-S33/S37/T41) CTNNB1 Antibody
Reactive Species	Human, Mouse, Rat
Description	Boster Bio Anti-Catenin-Beta (phospho-S33/S37/T41) CTNNB1 Antibody catalog # A00004S33S37T41. Tested in IHC applications. This antibody reacts with Human,Mouse,Rat.
Application	IHC
Clonality	Polyclonal PI9-17
Formulation	Rabbit IgG, 1mg/ml in PBS with 0.02% sodium azide, 50% glycerol, pH7.2
Storage Instructions	Store at -20°C for one year. For short term storage and frequent use, store at 4°C for up to one month. Avoid repeated freeze-thaw cycles.
Host	Rabbit
Uniprot ID	P35222

### Technical Details

Immunogen	Synthesized peptide derived from human mTOR around the phosphorylation site of S2481.
Predicted Reactive Species	Bovine, Chicken
Cross Reactivity	Weakly cross-reacts with dog p53.
Isotype	IgG
Form	Liquid
Concentration	1 mg/ml
Purification	The antibody was affinity-purified from rabbit antiserum by affinity-chromatography using epitope-

	specific immunogen and the purity is > 95% (by SDS-PAGE).
Suggested Dilutions	<p>Dilute the sample so that the expected range of concentrations fall within the detection range of this kit.</p> <p>If the expected range of concentration is unknown, a pilot test should be conducted to decide the optimal dilution ratio for your samples.</p> <p>Some PubMed article(s) citing the expression level of this target are as follows:</p> <p>Boster Bio's internal QC testing used:</p> <p>IHC: 1:50-1:200</p>

## Anti-Catenin-Beta (phospho-S33/S37/T41) CTNNB1 Antibody (A00004S33S37T41) Images

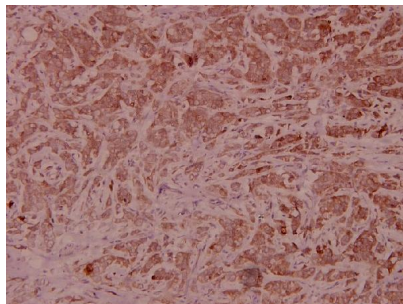


Figure 1. Immunohistochemistry validation of CTNNB1 using Anti-Catenin-Beta (phospho-S33/S37/T41) CTNNB1 Antibody (A00004S33S37T41).

Immunohistochemistry (IHC) analyzes of p-Catenin-beta (S33/S37/T41) pAb in paraffin-embedded human breast carcinoma tissue at 1:100.

For more protocol information of IHC

### Submit a product review to Biocompare.com

Submit a review of this product to Biocompare.com to receive a \$20 Amazon.com giftcard! Your reviews help your fellow scientists make the right decisions. Thank you for your contribution.



Anti-Catenin-Beta (phospho-S33/S37/T41) CTNNB1 Antibody