

Anti-BRCA1 (phospho-S1524) Antibody

Catalog Number: A00005S1524

About BRCA1

Anti-Glycogen Synthase 1 pS641 antibody is validated by IHC, Western Blot and ELISA. Human muscle glycogen synthase (GS) is responsible for the biosynthesis of glycogen from phosphorylated glucose units. Mammalian liver and muscle contain GS consisting of four subunits with a total molecular weight of 360,000. GS is subject to regulation through both allosteric and covalent modification and occurs in two forms: the phosphorylated inactive form, and the dephosphorylated active form. GS is inactivated by the serine/threonine kinase called glycogen synthase kinase-3 β that mainly functions to phosphorylate muscle glycogen synthase. This antibody is specific for the phosphorylated form of GS at S641. Phosphorylation of GS at S641 has been associated with Antiphospholipid Antibody Syndrome.

Overview

Product Name	Anti-BRCA1 (phospho-S1524) Antibody
Reactive Species	Human, Mouse, Rat
Description	Boster Bio Anti-BRCA1 (phospho-S1524) Antibody catalog # A00005S1524. Tested in WB,IHC applications. This antibody reacts with Human,Mouse,Rat.
Application	IHC, WB
Clonality	Polyclonal PI9-17
Formulation	Rabbit IgG, 1mg/ml in PBS with 0.02% sodium azide, 50% glycerol, pH7.2
Storage Instructions	Store at -20°C for one year. For short term storage and frequent use, store at 4°C for up to one month. Avoid repeated freeze-thaw cycles.
Host	Rabbit
Uniprot ID	P38398

Technical Details

Immunogen	Synthesized peptide derived from human BRCA1 around the phosphorylation site of S1457.
Predicted Reactive Species	Bovine, Chicken
Cross Reactivity	Weakly cross-reacts with dog p53.
Isotype	IgG
Form	Liquid
Concentration	1 mg/ml
Purification	The antibody was affinity-purified from rabbit antiserum by affinity-chromatography using epitope-

	specific immunogen and the purity is > 95% (by SDS-PAGE).
Suggested Dilutions	<p>Dilute the sample so that the expected range of concentrations fall within the detection range of this kit.</p> <p>If the expected range of concentration is unknown, a pilot test should be conducted to decide the optimal dilution ratio for your samples.</p> <p>Some PubMed article(s) citing the expression level of this target are as follows:</p> <p>Boster Bio's internal QC testing used:</p> <p>WB: 1:500-1:1000</p> <p>IHC: 1:50-1:200</p>

Anti-BRCA1 (phospho-S1524) Antibody (A00005S1524) Images

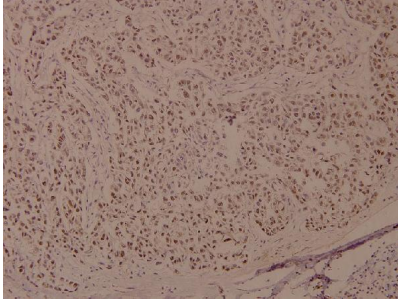


Figure 2. Immunohistochemistry validation of BRCA1 using Anti-BRCA1 (phospho-S1524) Antibody (A00005S1524).

Immunohistochemistry (IHC) analyzes of p-BRCA1 (S1524) pAb in paraffin-embedded human breast carcinoma tissue at 1:100.

For more protocol information of IHC

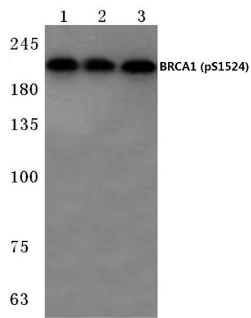


Figure 1. Western blotting validation for Anti-BRCA1 (phospho-S1524) Antibody A00005S1524

Western blot (WB) analysis of BRCA1 (phospho-S1524) polyclonal antibody at 1:500 dilution

Lane1:A2780 whole cell lysate(40ug)

Lane2:SK-OVCA3 whole cell lysate(40ug)

Lane3:The Lung tissue lysate of Mouse(40ug)

Lane4:H1792 whole cell lysate(40ug)

Lane5:C6 whole cell lysate(40ug)

Electrophoresis was performed on a SDS-PAGE gel. To determine SDS-PAGE gel concentration

Submit a product review to Biocompare.com

Submit a review of this product to Biocompare.com to receive a \$20 Amazon.com giftcard! Your reviews help your fellow scientists make the right decisions. Thank you for your contribution.



Anti-BRCA1 (phospho-S1524) Antibody