

## Anti-Serine-protein kinase ATM ATM Antibody

Catalog Number: A00014

### About ATM

DNA double strand breaks represent a major threat to an organism's genome. Eukaryotic cells have developed mechanisms that sense the presence of this damage and initiate suitable responses that can include DNA repair, cell cycle delay, and programmed cell death. The ATM (mutated in Ataxia-Telangiectasia) protein kinase is activated following the formation of DNA double strand breaks, phosphorylating p53 and another kinase CHK2. This initiates a signaling cascade leading to the phosphorylation and inhibition of Cdc25, ultimately preventing cell cycle progression. In some cell types, such as the hemopoietic system, this leads to apoptosis instead of cell cycle arrest. Multiple isoforms of ATM are known to exist.

### Overview

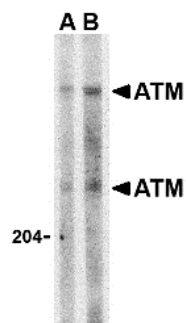
Product Name	Anti-Serine-protein kinase ATM ATM Antibody
Reactive Species	Human
Description	Boster Bio Anti-Serine-protein kinase ATM ATM Antibody (Catalog # A00014). Tested in ELISA, WB, IHC-P, IF applications. This antibody reacts with Human.
Application	ELISA, IF, IHC-P, WB
Clonality	Polyclonal
Formulation	ATM Antibody is supplied in PBS containing 0.02% sodium azide.
Storage Instructions	ATM antibody can be stored at 4°C for three months and -20°C, stable for up to one year. Avoid repeated freeze-thaw cycles. Antibodies should not be exposed to prolonged high temperatures.
Host	Rabbit
Uniprot ID	Q13315

### Technical Details

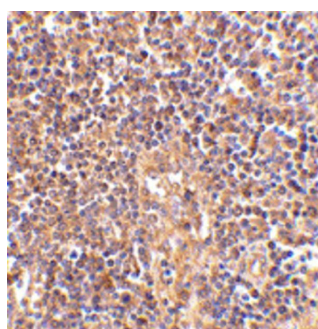
Immunogen	<a href="#">ATM antibody</a> was raised against a peptide corresponding to 14 amino acids near the carboxy terminus of human ATM. The immunogen is located within amino acids 2970 - 3020 of ATM.
Predicted Reactive Species	Mouse, Pig
Isotype	IgG
Form	Liquid
Concentration	1 mg/mL
Purification	ATM Antibody is affinity chromatography purified via peptide column.
Suggested Dilutions	ATM antibody can be used for detection of ATM by Western blot at 1 - 2 ug/mL. Antibody can also be used for immunohistochemistry starting at 2.5 ug/mL. For immunofluorescence start at 10 ug/mL.

Antibody validated: Western Blot in human samples; Immunohistochemistry in human samples and Immunofluorescence in human samples. All other applications and species not yet tested. Optimal dilutions for each application should be determined by the researcher.

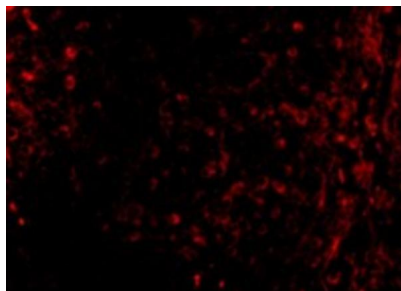
## Anti-Serine-protein kinase ATM ATM Antibody (A00014) Images



Western blot analysis of ATM in Daudi whole cell lysate with ATM antibody at (A) 1 and (B) 2 ug/mL.



Immunohistochemistry of ATM in human lymph node tissue with ATM antibody at 2.5 ug/mL.



Immunofluorescence of ATM in Human Lymph Node cells with ATM antibody at 10 ug/mL.

### Submit a product review to [Biocompare.com](https://www.biocompare.com)

Submit a review of this product to [Biocompare.com](https://www.biocompare.com) to receive a \$20 Amazon.com giftcard! Your reviews help your fellow scientists make the right decisions. Thank you for your contribution.



Anti-Serine-protein kinase ATM ATM Antibody

For Research Use Only. Not for use in diagnostic procedures.