

## Anti-ATM (phospho S1981) Antibody

Catalog Number: A00014S1981

### Overview

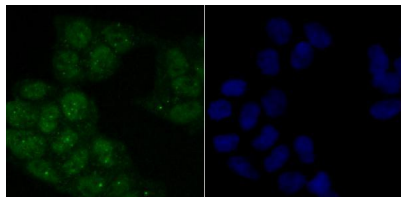
Product Name	Anti-ATM (phospho S1981) Antibody
Reactive Species	Human, Mouse
Description	Boster Bio Anti-ATM (phospho S1981) Antibody catalog # A00014S1981. Tested in WB,ICC/IF,IHC,IP applications. This antibody reacts with Human,Mouse.
Application	IP, IF, IHC, ICC, WB
Clonality	Polyclonal
Formulation	Rabbit IgG, 1mg/ml in PBS with 0.02% sodium azide, 50% glycerol, pH7.2
Storage Instructions	Store at -20°C for one year. For short term storage and frequent use, store at 4°C for up to one month. Avoid repeated freeze-thaw cycles.
Host	Rabbit
Uniprot ID	Q13315

### Technical Details

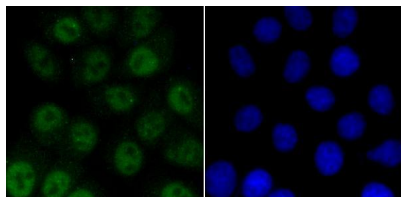
Immunogen	Synthetic phospho-peptide corresponding to residues surrounding Ser1981 of human ATM.
Isotype	IgG
Form	Liquid
Concentration	1 mg/ml
Purification	ProA affinity purified
Suggested Dilutions	WB: 1:500-1:1,000 ICC: 1:50-1:200 IHC: 1:50-1:100

## Anti-ATM (phospho S1981) Antibody (A00014S1981) Images

---



ICC staining ATM (phospho S1981) in HeLa cells (green). The nuclear counter stain is DAPI (blue). Cells were fixed in paraformaldehyde, permeabilised with 0.25% Triton X100/PBS.



ICC staining ATM (phospho S1981) in HepG2 cells (green). The nuclear counter stain is DAPI (blue). Cells were fixed in paraformaldehyde, permeabilised with 0.25% Triton X100/PBS.

### Submit a product review to [Biocompare.com](https://www.biocompare.com)

---

Submit a review of this product to [Biocompare.com](https://www.biocompare.com) to receive a \$20 Amazon.com giftcard! Your reviews help your fellow scientists make the right decisions. Thank you for your contribution.



Anti-ATM (phospho S1981) Antibody

For Research Use Only. Not for use in diagnostic procedures.