

## Anti-ATM (phospho-S1987) Antibody

Catalog Number: A00014S1987

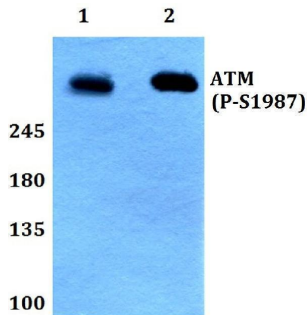
### Overview

Product Name	Anti-ATM (phospho-S1987) Antibody
Reactive Species	Human, Mouse, Rat
Description	Boster Bio Anti-ATM (phospho-S1987) Antibody catalog # A00014S1987. Tested in WB applications. This antibody reacts with Human, Mouse, Rat.
Application	WB
Clonality	Polyclonal
Formulation	Rabbit IgG, 1mg/ml in PBS with 0.02% sodium azide, 50% glycerol, pH7.2
Storage Instructions	Store at -20°C for one year. For short term storage and frequent use, store at 4°C for up to one month. Avoid repeated freeze-thaw cycles.
Host	Rabbit
Uniprot ID	Q13315

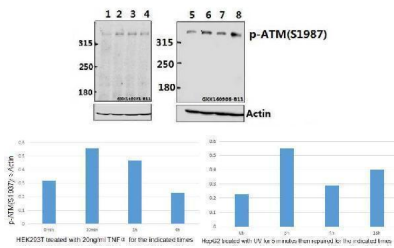
### Technical Details

Immunogen	A synthetic peptide corresponding to residues in Human ATM around the phosphorylation site of ser1987.
Isotype	IgG
Form	Liquid
Concentration	1 mg/ml
Purification	The antibody was affinity-purified from rabbit antiserum by affinity-chromatography using epitope-specific immunogen and the purity is > 95% (by SDS-PAGE).
Suggested Dilutions	WB: 1:500-1:1000

## Anti-ATM (phospho-S1987) Antibody (A00014S1987) Images



Western blot (WB) analysis of p-ATM (S1987) polyclonal antibody at 1:500 dilution Lane1:HEK293T whole cell lysate treated with UV(24h) Lane2:Raw264.7 whole cell lysate treated with UV(24h)



Western blot (WB) analysis of ATM (phospho-S1987) pAb at 1:500 dilution Lane1:HEK293T whole cell lysate(40ug) Lane2:HEK293T treated with TNFalpha(20ng/ml) for 10 minutes whole cell lysate Lane3:HEK293T treated with TNFalpha(20ng/ml) for 1 hour whole cell lysate Lane4:HEK293T treated with TNFalpha(20ng/ml) for 4 hours whole cell lysate Lane5:HepG2 whole cell lysate(40ug) Lane6:HepG2 treated with UV for 5 minutes then repaired for 3 hours whole cell lysate(40ug) Lane7:HepG2 treated with UV for 5 minutes then repaired for 4 hours whole cell lysate(40ug) Lane8:HepG2 treated with UV for 5 minutes then repaired for 18 hours whole cell lysate(40ug)

### Submit a product review to Biocompare.com

Submit a review of this product to Biocompare.com to receive a \$20 Amazon.com giftcard! Your reviews help your fellow scientists make the right decisions. Thank you for your contribution.



Anti-ATM (phospho-S1987) Antibody

For Research Use Only. Not for use in diagnostic procedures.