

Anti-APOLIPOPROTEINE APOE Antibody

Catalog Number: A00015

Introduction

CD3epsilon is a 20kD chain, which together with CD3lambda, CD3delta, and CD3zeta, and a T cell receptor (alpha/beta or gamma/δ) form the CD3/T-cell receptor complex. It is a specific marker for T lymphocytes, NK T cells, and some thymocytes. Crosslinking of TCR initiates an intracellular signaling cascade resulting in cellular activation and proliferation. The OKT3 antibody has been reported to have potent immunosuppressive properties in vivo and has been proved effective in the treatment of renal, heart, and liver allograft rejection.

This antibody is routinely tested by flow cytometric analysis. Flow cytometry and other applications were tested during antibody development or are reported in the literature.

Application Information

Each lot of this antibody has been quality control tested by flow cytometric analysis of human PBMCs. For flow cytometric staining, the recommended use of this antibody is $\leq 0.5\mu\text{g}$ per 1×10^6 cells in $100\mu\text{l}$ of staining volume followed by a secondary fluorescent conjugated anti-mouse antibody. However, it is strongly suggested that the antibody reactivity be empirically titrated for optimal performance in the application of interest.

About APOE

Anti Apolipoprotein E Antibody recognizes the gene product of APOE. Apolipoprotein E is found in the chylomicron and IDLs that binds to a specific receptor on liver cells and peripheral cells. Apolipoprotein E is essential for the normal catabolism of triglyceride-rich lipoprotein constituents. This antibody is suitable for cardiovascular research.

Overview

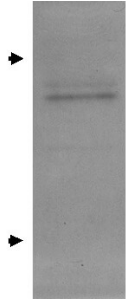
Product Name	Anti-APOLIPOPROTEINE APOE Antibody
Reactive Species	Human, Rat
Description	Boster Bio Anti-APOLIPOPROTEINE APOE Antibody (Catalog # A00015). Tested in WB applications. This antibody reacts with Human, Rat.
Conjugate	Biotin
Application	ELISA, IP, IHC, WB
Clonality	Polyclonal
Formulation	0.125 M Sodium Borate, 0.075 M Sodium Chloride, 0.005 M EDTA, pH 8.0, 0.01% (w/v) Sodium Azide
Storage Instructions	Store vial at 4°C prior to opening. This product is stable at 4°C as an undiluted liquid. Dilute only prior to immediate use. For extended storage, mix with an equal volume of glycerol, aliquot contents and freeze at -20°C or below. Avoid cycles of freezing and thawing. Expiration date is one (1) year from date of opening. (Ship on wet ice.)

Host	Goat
Uniprot ID	P02649

Technical Details

Immunogen	Apolipoprotein Type E was isolated from human plasma by density gradient centrifugation followed by HPLC purification.
Predicted Reactive Species	Mouse, Rat
Cross Reactivity	beta-Actin antibody is human, mouse, rat, rabbit, chicken, zebrafish and drosophila reactive.
Isotype	IgG
Form	Liquid (sterile filtered)
Concentration	1.0 mg/mL by UV absorbance at 280 nm
Purification	Anti-Apolipoprotein E has been prepared by immunoaffinity chromatography using immobilized antigens followed by extensive cross-adsorption against other apoLipoproteins and human serum proteins to remove any unwanted specificities. Typically less than 1% cross-reactivity against other types of apoLipoprotein was detected by ELISA against purified standards. This antibody reacts with human apoLipoprotein E and has negligible cross-reactivity with Type A-1 A-II, B, C-I, C-II, C-III and J apoLipoproteins. Specific cross-reaction of anti-apoLipoprotein antibodies with antigens from other species has not been determined. Non-specific cross-reaction of anti-apoLipoprotein antibodies with other human serum proteins is negligible.
Suggested Dilutions	ELISA: 1:4,000 - 1:8,000 IHC: 1:50 - 1:200 IP: 1:100 WB: 1:500 - 1:2,000 Apolipoprotein E antibodies have been tested by western blot and used for indirect trapping ELISA for quantitation of antigen in serum using a standard curve, for immunoprecipitation and for western blotting for highly sensitive qualitative analysis.

Anti-APOLIPOPROTEINE APOE Antibody (A00015) Images



Western Blot of goat Anti Apolipoprotein E Antibody. Lane 1: rat glial whole cell lysate. Load: 40 μ g per lane. Primary antibody: Apolipoprotein E antibody at 1:1000 for overnight at 4°C. Secondary antibody: HRP goat secondary antibody at 1:200 for 45 min at RT. Block: 3%BLOTTO overnight at 4°C. Predicted/Observed size: 36 kDa, 35-36 kDa for APO-E. MW markers arrows at 25kDa and 37kDa. Other band(s): ~55kDa.

1 Publications Citing This Product

1. PubMed ID: 33061590, Xue Y,Huang S,Huang J,Li S,Zhang C,Zhou X.Identification of Apolipoprotein E as a Potential Diagnostic Biomarker of Nasopharyngeal Carcinoma.Cancer Manag Res.2020 Sep 24;12:8943-8950.doi:10.2147/CMAR.S239479.PMID:33061590;PMCID:PMC7522425.

Visit bosterbio.com/anti-apolipoproteine-antibody-a00015-boster.html to see all 1 publications.

Submit a product review to Biocompare.com

Submit a review of this product to Biocompare.com to receive a \$20 Amazon.com giftcard! Your reviews help your fellow scientists make the right decisions. Thank you for your contribution.



Anti-APOLIPOPROTEINE APOE Antibody

For Research Use Only. Not for use in diagnostic procedures.