

## Anti-Apolipoprotein E APOE Antibody

Catalog Number: A00015-3

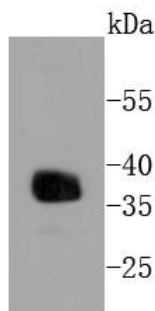
### Overview

Product Name	Anti-Apolipoprotein E APOE Antibody
Reactive Species	Human, Mouse
Description	Boster Bio Anti-Apolipoprotein E APOE Antibody catalog # A00015-3. Tested in WB,ICC/IF,IHC,IP applications. This antibody reacts with Human,Mouse.
Application	IP, IF, IHC, ICC, WB
Clonality	Polyclonal
Formulation	Rabbit IgG, 1mg/ml in PBS with 0.02% sodium azide, 50% glycerol, pH7.2
Storage Instructions	Store at -20°C for one year. For short term storage and frequent use, store at 4°C for up to one month. Avoid repeated freeze-thaw cycles.
Host	Rabbit
Uniprot ID	P02649

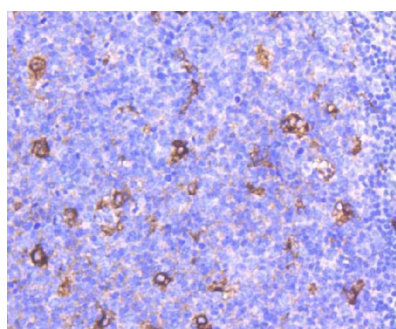
### Technical Details

Immunogen	recombinant protein
Isotype	IgG
Form	Liquid
Concentration	1 mg/ml
Purification	ProA affinity purified
Suggested Dilutions	WB: 1:1,000-1:5,000 ICC: 1:50-1:200 IHC: 1:50-1:200

## Anti-Apolipoprotein E APOE Antibody (A00015-3) Images



Western blot analysis of Apolipoprotein E on human kidney lysates using anti-Apolipoprotein E antibody at 1/1,000 dilution.



Immunohistochemical analysis of paraffin-embedded human tonsil tissue using anti-Apolipoprotein E antibody. Counter stained with hematoxylin.

### 1 Publications Citing This Product

1. PubMed ID: 33061590, Xue Y,Huang S,Huang J,Li S,Zhang C,Zhou X.Identification of Apolipoprotein E as a Potential Diagnostic Biomarker of Nasopharyngeal Carcinoma.Cancer Manag Res.2020 Sep 24;12:8943-8950.doi:10.2147/CMAR. S239479.PMID:33061590;PMCID:PMC7522425.

Visit [bosterbio.com/anti-apolipoprotein-e-apoe-antibody-a00015-3-boster.html](https://bosterbio.com/anti-apolipoprotein-e-apoe-antibody-a00015-3-boster.html) to see all 1 publications.

### Submit a product review to Biocompare.com

Submit a review of this product to Biocompare.com to receive a \$20 Amazon.com giftcard! Your reviews help your fellow scientists make the right decisions. Thank you for your contribution.



Anti-Apolipoprotein E APOE Antibody

For Research Use Only. Not for use in diagnostic procedures.