

Anti-TLR4 (S441) Antibody

Catalog Number: A00017S441

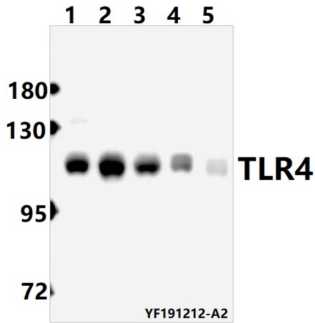
Overview

Product Name	Anti-TLR4 (S441) Antibody
Reactive Species	Human, Mouse, Rat
Description	Boster Bio Anti-TLR4 (S441) Antibody catalog # A00017S441. Tested in WB,IHC,IF,IP applications. This antibody reacts with Human,Mouse,Rat.
Application	IP, IF, IHC, WB
Clonality	Polyclonal
Formulation	Rabbit IgG, 1mg/ml in PBS with 0.02% sodium azide, 50% glycerol, pH7.2
Storage Instructions	Store at -20°C for one year. For short term storage and frequent use, store at 4°C for up to one month. Avoid repeated freeze-thaw cycles.
Host	Rabbit
Uniprot ID	O00206

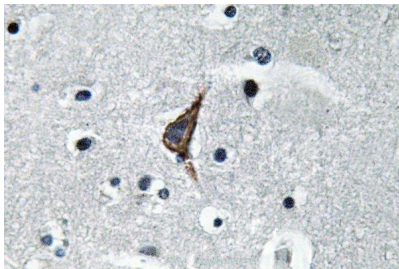
Technical Details

Immunogen	Synthetic peptide, corresponding to amino acids 421-470 of Human TLR4.
Isotype	IgG
Form	Liquid
Concentration	1 mg/ml
Purification	The antibody was affinity-purified from rabbit antiserum by affinity-chromatography using epitope-specific immunogen and the purity is > 95% (by SDS-PAGE).
Suggested Dilutions	WB: 1:500-1:2000 IHC: 1:100-1:200 IF: 1:50-1:200 IP: 1:50-1:200

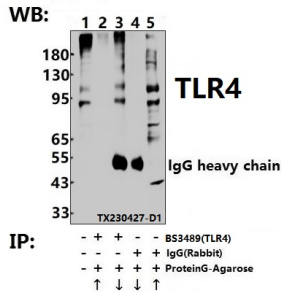
Anti-TLR4 (S441) Antibody (A00017S441) Images



Western blot (WB) analysis of TLR4 (S441) pAb at 1:500 dilution
Lane1:HCT116 whole cell lysate(40ug)
Lane2:HEK293T whole cell lysate(40ug) Lane3:Myla2059 whole cell lysate(40ug) Lane4:Jurkat whole cell lysate(40ug)
Lane5:MCF-7 whole cell lysate (40ug)



Immunohistochemistry (IHC) analyzes of TLR4 (S441) pAb in paraffin-embedded human brain tissue.



Immunoprecipitation of MCF-7 cell lysates using TLR4 (S441) pAb (Sepharose Bead Conjugate)#BD0048 (lane 2 and lane 3) and Nonspecific IgG Control (Sepharose Bead Conjugate)#BD0048 (lane 4 and lane 5) .Lane 1 is 30% input. The western blot was probed using TLR4 (S441) pAb #BS3489.

Anti-TLR4 (S441) Antibody

For Research Use Only. Not for use in diagnostic procedures.