

Anti-EGFR (phospho-S1046) Antibody

Catalog Number: A00023S1046

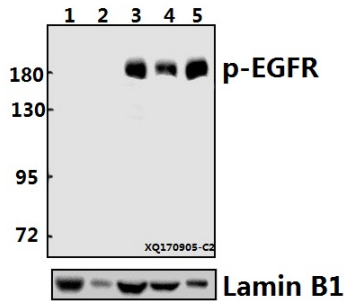
Overview

| | |
|----------------------|--|
| Product Name | Anti-EGFR (phospho-S1046) Antibody |
| Reactive Species | Human |
| Description | Boster Bio Anti-EGFR (phospho-S1046) Antibody catalog # A00023S1046. Tested in WB,IHC applications. This antibody reacts with Human. |
| Application | IHC, WB |
| Clonality | Polyclonal |
| Formulation | Rabbit IgG, 1mg/ml in PBS with 0.02% sodium azide, 50% glycerol, pH7.2 |
| Storage Instructions | Store at -20°C for one year. For short term storage and frequent use, store at 4°C for up to one month. Avoid repeated freeze-thaw cycles. |
| Host | Rabbit |
| Uniprot ID | P00533 |

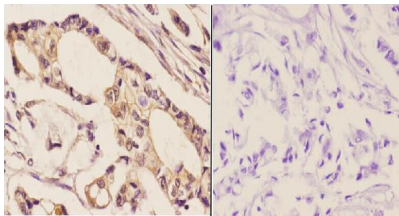
Technical Details

| | |
|---------------------|---|
| Immunogen | Synthetic phosphopeptide derived from human EGFR around the phosphorylation site of Serine 1046. |
| Isotype | IgG |
| Form | Liquid |
| Concentration | 1 mg/ml |
| Purification | The antibody was affinity-purified from rabbit antiserum by affinity-chromatography using epitope-specific immunogen and the purity is > 95% (by SDS-PAGE). |
| Suggested Dilutions | WB: 1:500-1:1000 IHC: 1:50-1:200 |

Anti-EGFR (phospho-S1046) Antibody (A00023S1046) Images



Western blot (WB) analysis of EGFR (phospho-S1046) polyclonal antibody at 1:500 dilution Lane1:The Lung tissue lysate of Mouse(40ug) Lane2:The Lung tissue lysate of Rat(40ug) Lane3:A549 whole cell lysate(40ug) Lane4:SKOV3 whole cell lysate(20ug) Lane5:HCC827 whole cell lysate(10ug)



Immunohistochemistry (IHC) analyzes of p-EGFR (S1046) pAb in paraffin-embedded human breast carcinoma tissue at 1:50, showing cell membrane and nucleus staining. Negative control (the right) Using PBS instead of primary antibody, secondary antibody is Goat Anti-Rabbit IgG-biotin followed by avidin-peroxidase.

Submit a product review to [Biocompare.com](https://www.biocompare.com)

Submit a review of this product to [Biocompare.com](https://www.biocompare.com) to receive a \$20 Amazon.com giftcard! Your reviews help your fellow scientists make the right decisions. Thank you for your contribution.



Anti-EGFR (phospho-S1046) Antibody

For Research Use Only. Not for use in diagnostic procedures.