

Anti-EGFR (phospho-Y992) Antibody

Catalog Number: A00023Y992-1

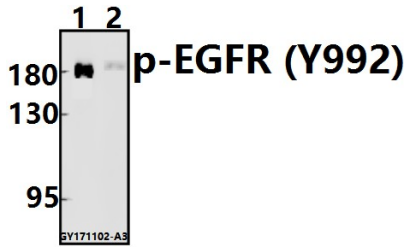
Overview

Product Name	Anti-EGFR (phospho-Y992) Antibody
Reactive Species	Human, Mouse, Rat
Description	Boster Bio Anti-EGFR (phospho-Y992) Antibody catalog # A00023Y992-1. Tested in WB,IHC,IF applications. This antibody reacts with Human,Mouse,Rat.
Application	IF, IHC, WB
Clonality	Polyclonal
Formulation	Rabbit IgG, 1mg/ml in PBS with 0.02% sodium azide, 50% glycerol, pH7.2
Storage Instructions	Store at -20°C for one year. For short term storage and frequent use, store at 4°C for up to one month. Avoid repeated freeze-thaw cycles.
Host	Rabbit
Uniprot ID	P00533

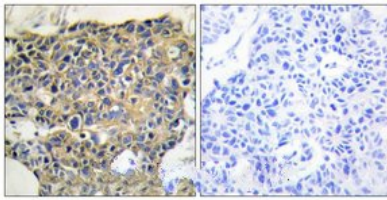
Technical Details

Immunogen	Synthetic phosphopeptide derived from human EGFR around the phosphorylation site of Tyrosine 992.
Isotype	IgG
Form	Liquid
Concentration	1 mg/ml
Purification	The antibody was affinity-purified from rabbit antiserum by affinity-chromatography using epitope-specific immunogen and the purity is > 95% (by SDS-PAGE).
Suggested Dilutions	WB: 1:500-1:1000 IHC: 1:50-1:200 IF: 1:50-1:200

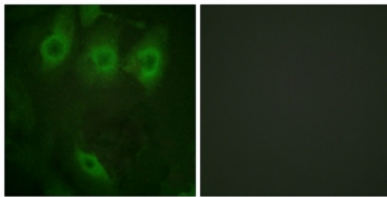
Anti-EGFR (phospho-Y992) Antibody (A00023Y992-1) Images



Western blot (WB) analysis of p-EGFR (Y992)) pAb at 1:500 dilution Lane1:HCC827 whole cell lysate(20ug) Lane2:A549 whole cell lysate(40ug)



Immunohistochemistry analysis of paraffin-embedded human breast carcinoma, using p-EGFR (Y992) pAb. The picture on the right is treated with the synthesized peptide.



Immunofluorescence analysis of HeLa cells, using p-EGFR (Y992) pAb. The picture on the right is treated with the synthesized peptide.

Submit a product review to Biocompare.com

Submit a review of this product to Biocompare.com to receive a \$20 Amazon.com giftcard! Your reviews help your fellow scientists make the right decisions. Thank you for your contribution.



Anti-EGFR (phospho-Y992) Antibody

For Research Use Only. Not for use in diagnostic procedures.