

Anti-AKT (phospho-T308) AKT1 Antibody

Catalog Number: A00024T308-1

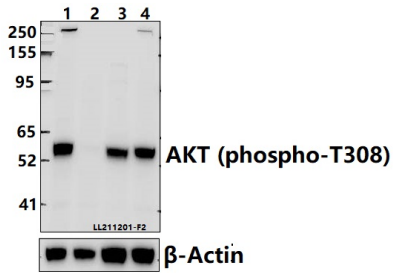
Overview

Product Name	Anti-AKT (phospho-T308) AKT1 Antibody
Reactive Species	Human, Mouse, Rat
Description	Boster Bio Anti-AKT (phospho-T308) AKT1 Antibody catalog # A00024T308-1. Tested in WB,IP,IF applications. This antibody reacts with Human,Mouse,Rat.
Application	IP, IF, WB
Clonality	Polyclonal
Formulation	Rabbit IgG, 1mg/ml in PBS with 0.02% sodium azide, 50% glycerol, pH7.2
Storage Instructions	Store at -20°C for one year. For short term storage and frequent use, store at 4°C for up to one month. Avoid repeated freeze-thaw cycles.
Host	Rabbit
Uniprot ID	P31749/P31751/Q9Y243

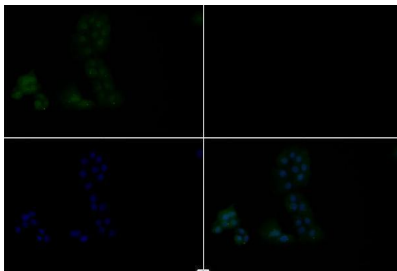
Technical Details

Immunogen	Synthetic phosphopeptide derived from human AKT around the phosphorylation site of Threonine 308.
Isotype	IgG
Form	Liquid
Concentration	1 mg/ml
Purification	The antibody was affinity-purified from rabbit antiserum by affinity-chromatography using epitope-specific immunogen and the purity is > 95% (by SDS-PAGE).
Suggested Dilutions	WB: 1:2000-1:5000 IP: 1:50-1:200 IF: 1:50-1:200

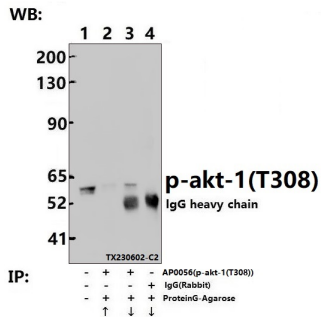
Anti-AKT (phospho-T308) AKT1 Antibody (A00024T308-1) Images



Western blot (WB) analysis of AKT (phospho-T308) polyclonal antibody at 1:5000 dilution Lane1:HeLa whole cell lysate(40ug) Lane2:Hela treated with lambda-phosphatase whole cell lysate(40ug) Lane3:PMVEC whole cell lysate(40ug) Lane4:BV2 whole cell lysate(40ug)



Immunofluorescence analysis of HeLa cells using AKT (phospho-T308) pAb at dilution of 1:200.



Immunoprecipitation of PC12 cell lysates using AKT (phospho-T308) pAb (Sepharose Bead Conjugate)#BD0048 (lane 2 and lane 3) and Nonspecific IgG Control (Sepharose Bead Conjugate)#BD0048 (lane 4) .Lane 1 is 30% input. The western blot was probed using AKT (phospho-T308) pAb #AP0056.

Submit a product review to [Biocompare.com](https://www.biocompare.com)

Submit a review of this product to [Biocompare.com](https://www.biocompare.com) to receive a \$20 Amazon.com giftcard! Your reviews help your fellow scientists make the right decisions. Thank you for your contribution.



Anti-AKT (phospho-T308) AKT1 Antibody

For Research Use Only. Not for use in diagnostic procedures.