

Anti-AKT (phospho-T450) AKT1 Antibody

Catalog Number: A00024T450-1

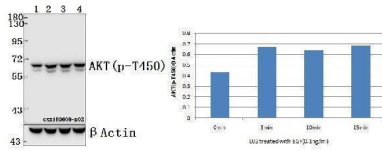
Overview

Product Name	Anti-AKT (phospho-T450) AKT1 Antibody
Reactive Species	Human, Mouse, Rat
Description	Boster Bio Anti-AKT (phospho-T450) AKT1 Antibody catalog # A00024T450-1. Tested in WB,IHC,IP applications. This antibody reacts with Human,Mouse,Rat.
Application	IP, IHC, WB
Clonality	Polyclonal
Formulation	Rabbit IgG, 1mg/ml in PBS with 0.02% sodium azide, 50% glycerol, pH7.2
Storage Instructions	Store at -20°C for one year. For short term storage and frequent use, store at 4°C for up to one month. Avoid repeated freeze-thaw cycles.
Host	Rabbit
Uniprot ID	P31749/P31751/Q9Y243

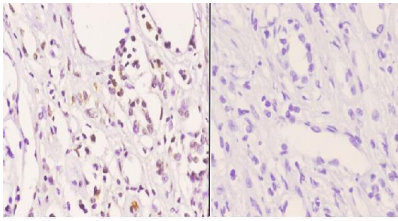
Technical Details

Immunogen	Synthetic phosphopeptide derived from human AKT1 around the phosphorylation site of Threonine 450.
Isotype	IgG
Form	Liquid
Concentration	1 mg/ml
Purification	The antibody was affinity-purified from rabbit antiserum by affinity-chromatography using epitope-specific immunogen and the purity is > 95% (by SDS-PAGE).
Suggested Dilutions	WB: 1:500-1:1000 IHC: 1:50-1:200

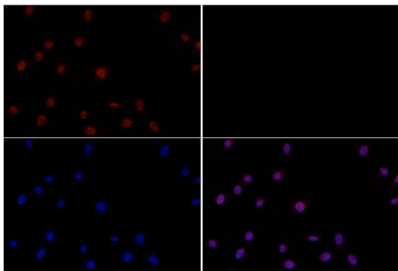
Anti-AKT (phospho-T450) AKT1 Antibody (A00024T450-1) Images



Western blot (WB) analysis of AKT (phospho-T450) polyclonal antibody at 1:500 dilution Lane1:L02 whole cell lysate Lane2:L02 treated with EGF(0.1ng/ml,5min) whole cell lysate Lane3:L02 treated with EGF(0.1ng/ml,10min) whole cell lysate Lane4:L02 treated with EGF(0.1ng/ml,15min) whole cell lysate



Immunohistochemistry (IHC) analyzes of p-AKT (T450) pAb in paraffin-embedded human kidney carcinoma tissue at 1:50, showing cytoplasmic and nucleus staining. Negative control (the right) Using PBS instead of primary antibody, secondary antibody is Goat Anti-Rabbit IgG-biotin followed by avidin-peroxidase.



Immunofluorescence analysis of NIH-3T3 cells using AKT (phospho-T450) pAb at dilution of 1:200 (40x lens).

Submit a product review to Biocompare.com

Submit a review of this product to Biocompare.com to receive a \$20 Amazon.com giftcard! Your reviews help your fellow scientists make the right decisions. Thank you for your contribution.



Anti-AKT (phospho-T450) AKT1 Antibody

For Research Use Only. Not for use in diagnostic procedures.