

## Anti-MAPK1 Antibody (C-term)

Catalog Number: A00030

### About MAPK1

MAPK1 is a member of the MAP kinase family. MAP kinases, also known as extracellular signal-regulated kinases (ERKs), act as an integration point for multiple biochemical signals, and are involved in a wide variety of cellular processes such as proliferation, differentiation, transcription regulation and development. The activation of this kinase requires its phosphorylation by upstream kinases. Upon activation, this kinase translocates to the nucleus of the stimulated cells, where it phosphorylates nuclear targets.

### Overview

Product Name	Anti-MAPK1 Antibody (C-term)
Reactive Species	Human
Description	Boster Bio Anti-MAPK1 Antibody (C-term) (Catalog # A00030). Tested in WB, Flow Cytometry, IHC-P application(s). This antibody reacts with Human.
Application	Flow Cytometry, IHC-P, WB
Clonality	Polyclonal
Formulation	Purified polyclonal antibody supplied in PBS with 0.09% (W/V) sodium azide.
Storage Instructions	Maintain refrigerated at 2-8°C for up to 2 weeks. For long-term storage, store at -20°C in small aliquots to prevent freeze-thaw cycles.
Host	Rabbit
Uniprot ID	P28482

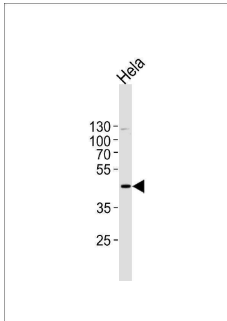
### Technical Details

Immunogen	This MAPK1 antibody is generated from rabbits immunized with a KLH conjugated synthetic peptide between 316-345 amino acids from the C-terminal region of human MAPK1.
Predicted Reactive Species	Bovine, Mouse, Rat
Recommended Detection Systems	Boster recommends Enhanced Chemiluminescent Kit with anti-Rabbit IgG (EK1002) for Western blot, and HRP Conjugated anti-Rabbit IgG Super Vision Assay Kit (SV0002-1) for IHC(P).
Cross Reactivity	No cross reactivity with other proteins.
Isotype	Rabbit IgG
Form	Liquid
Purification	This antibody is purified through a protein A column, followed by peptide affinity purification.

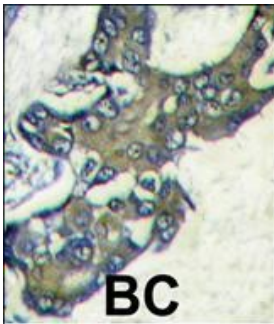
Suggested Dilutions

WB: 1:1000  
IHC-P: 1:50-1:100  
FC: 1:10-1:50

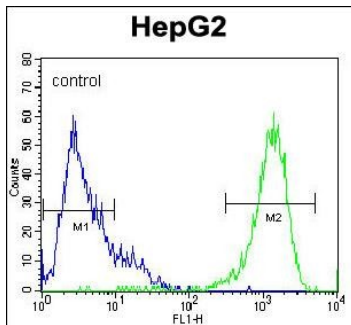
## Anti-MAPK1 Antibody (C-term) (A00030) Images



MAPK1 Antibody (C-term) western blot analysis in HeLa cell line lysates (35ug/lane). This demonstrates the MAPK1 antibody detected the MAPK1 protein (arrow).



Formalin-fixed and paraffin-embedded human breast carcinoma tissue reacted with MAPK1 Antibody (C-term) (Cat. #A00030), which was peroxidase-conjugated to the secondary antibody, followed by DAB staining. This data demonstrates the use of this antibody for immunohistochemistry; clinical relevance has not been evaluated.



MAPK1 Antibody (C-term) (Cat. #A00030) flow cytometric analysis of HepG2 cells (right histogram) compared to a negative control cell (left histogram). FITC-conjugated goat-anti-rabbit secondary antibodies were used for the analysis.

### Submit a product review to [Biocompare.com](https://www.biocompare.com)

Submit a review of this product to [Biocompare.com](https://www.biocompare.com) to receive a \$20 Amazon.com giftcard! Your reviews help your fellow scientists make the right decisions. Thank you for your contribution.



Anti-MAPK1 Antibody (C-term)

For Research Use Only. Not for use in diagnostic procedures.