

Anti-Notch1 Antibody Picoband®

Catalog Number: A00033-2

About NOTCH1

Notch proteins are single-pass transmembrane receptors that regulate cell fate decisions during development. The Notch family includes 4 receptors, NOTCH1, NOTCH2, NOTCH3, and NOTCH4, whose ligands include JAG1, JAG2, DLL1, DLL3, and DLL4. Notch homolog 1, translocation-associated (NOTCH1), is a human gene encoding a single-pass transmembrane receptor. It functions as a receptor for membrane bound ligands, and may play multiple roles during development. NOTCH1 may normally coordinates the process of somitogenesis, and the activated Notch 1 and Notch 3 promote differentiation of progenitor cells into astroglia.

Overview

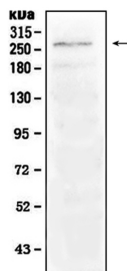
Product Name	Anti-Notch1 Antibody Picoband®
Reactive Species	Human, Mouse
Description	Boster Bio Anti-Notch1 Antibody Picoband® catalog # A00033-2. Tested in WB applications. This antibody reacts with Human, Mouse. The brand Picoband indicates this is a premium antibody that guarantees superior quality, high affinity, and strong signals with minimal background in Western blot applications. Only our best-performing antibodies are designated as Picoband, ensuring unmatched performance.
Application	WB
Clonality	Polyclonal
Formulation	Each vial contains 4mg Trehalose, 0.9mg NaCl, 0.2mg Na2HPO4, 0.05mg NaN3.
Storage Instructions	Store at -20°C for one year from date of receipt. After reconstitution, at 4°C for one month. It can also be aliquotted and stored frozen at -20°C for six months. Avoid repeated freeze-thaw cycles.
Host	Rabbit
Uniprot ID	P46531

Technical Details

Immunogen	A synthetic peptide corresponding to a sequence in the middle region of human Notch1, identical to the related mouse and rat sequences.
Recommended Detection Systems	Boster recommends Enhanced Chemiluminescent Kit with anti-Rabbit IgG (EK1002) for Western blot.
Cross Reactivity	No cross-reactivity with other proteins.
Isotype	Rabbit IgG
Form	Lyophilized

Concentration	Adding 0.2 ml of distilled water will yield a concentration of 500 ug/ml.
Purification	Immunogen affinity purified.
Suggested Dilutions	Western blot, 0.1-0.5ug/ml, Mouse, Human

Anti-Notch1 Antibody Picoband® (A00033-2) Images



Western blot analysis of Notch1 using anti-Notch1 antibody (A00033-2). Electrophoresis was performed on a 5-20% SDS-PAGE gel at 70V (Stacking gel) / 90V (Resolving gel) for 2-3 hours. The sample well of each lane was loaded with 50ug of sample under reducing conditions. Lane 1: mouse skeletal muscle tissue lysate. After Electrophoresis, proteins were transferred to a Nitrocellulose membrane at 150mA for 50-90 minutes. Blocked the membrane with 5% Non-fat Milk/TBS for 1.5 hour at RT. The membrane was incubated with rabbit anti-Notch1 antigen affinity purified polyclonal antibody (Catalog # A00033-2) at 0.5 ug/mL overnight at 4°C, then washed with TBS-0.1%Tween 3 times with 5 minutes each and probed with a goat anti-rabbit IgG-HRP secondary antibody at a dilution of 1:10000 for 1.5 hour at RT. The signal is developed using an Enhanced Chemiluminescent detection (ECL) kit (Catalog # EK1002) with Tanon 5200 system. A specific band was detected for Notch1 at approximately 272KD. The expected band size for Notch1 is at 272KD.

1 Publications Citing This Product

1. PubMed ID: 28713967, Involvement of Notch2 in all-trans retinoic acid-induced inhibition of mouse embryonic palate mesenchymal cell proliferation

Visit bosterbio.com/anti-notch1-picoband-trade-antibody-a00033-2-boster.html to see all 1 publications.

Submit a product review to Biocompare.com

Submit a review of this product to Biocompare.com to receive a \$20 Amazon.com giftcard! Your reviews help your fellow scientists make the right decisions. Thank you for your contribution.



Anti-Notch1 Antibody

For Research Use Only. Not for use in diagnostic procedures.