

Anti-Rb RB1 Antibody

Catalog Number: A00039-1

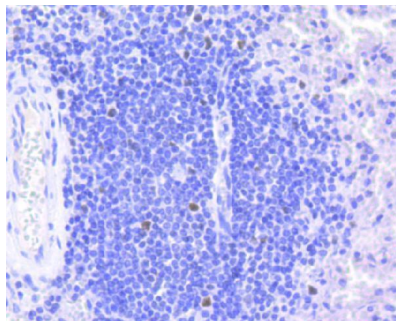
Overview

Product Name	Anti-Rb RB1 Antibody
Reactive Species	Human, Mouse
Description	Boster Bio Anti-Rb RB1 Antibody catalog # A00039-1. Tested in WB,ICC/IF,IHC,IP applications. This antibody reacts with Human,Mouse.
Application	IP, IF, IHC, ICC, WB
Clonality	Polyclonal
Formulation	Rabbit IgG, 1mg/ml in PBS with 0.02% sodium azide, 50% glycerol, pH7.2
Storage Instructions	Store at -20°C for one year. For short term storage and frequent use, store at 4°C for up to one month. Avoid repeated freeze-thaw cycles.
Host	Rabbit
Uniprot ID	P06400

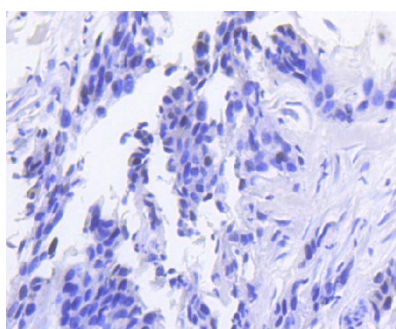
Technical Details

Immunogen	recombinant protein
Isotype	IgG
Form	Liquid
Concentration	1 mg/ml
Purification	ProA affinity purified
Suggested Dilutions	WB: 1:500-1:1,000 ICC: 1:50-1:200 IHC: 1:50-1:200

Anti-Rb RB1 Antibody (A00039-1) Images



Immunohistochemical analysis of paraffin-embedded human spleen tissue using anti-Rb antibody. Counter stained with hematoxylin.



Immunohistochemical analysis of paraffin-embedded human breast carcinoma tissue using anti-Rb antibody. Counter stained with hematoxylin.

Submit a product review to [Biocompare.com](https://www.biocompare.com)

Submit a review of this product to [Biocompare.com](https://www.biocompare.com) to receive a \$20 Amazon.com giftcard! Your reviews help your fellow scientists make the right decisions. Thank you for your contribution.



Anti-Rb RB1 Antibody

For Research Use Only. Not for use in diagnostic procedures.