

Anti-Phospho-Bcl-2 (S87) Antibody

Catalog Number: A00040S87

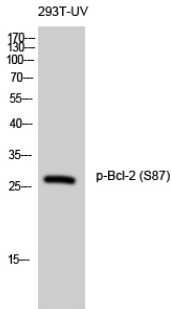
Overview

Product Name	Anti-Phospho-Bcl-2 (S87) Antibody
Reactive Species	Human, Mouse, Rat
Description	Boster Bio Anti-Phospho-Bcl-2 (S87) Antibody catalog # A00040S87. Tested in WB, IHC, IF, ELISA applications. This antibody reacts with Human, Mouse, Rat.
Application	ELISA, IF, IHC, WB
Clonality	Polyclonal
Formulation	Liquid in PBS containing 50% glycerol, 0.5% stabilizing protein and 0.02% sodium azide. *This antibody is supplied in a stabilized formulation. Compatibility with conjugation reactions depends on the chemistry of the conjugation method used. For conjugation methods that are not compatible with the stabilizing components present in this formulation, a carrier-free antibody format is required.
Storage Instructions	Store at -20°C for one year. For short term storage and frequent use, store at 4°C for up to one month. Avoid repeated freeze-thaw cycles.
Host	Rabbit
Uniprot ID	P10415

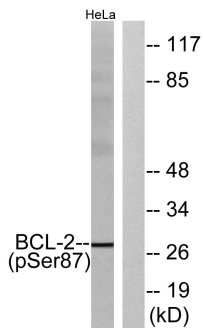
Technical Details

Immunogen	The antiserum was produced against synthesized peptide derived from human BCL-2 around the phosphorylation site of Ser87. AA range:61-110
Isotype	IgG
Form	Liquid
Concentration	1 mg/ml
Purification	The antibody was affinity-purified from rabbit antiserum by affinity-chromatography using epitope-specific immunogen.
Suggested Dilutions	WB 1:500-1:2000 IHC 1:100-1:300 ELISA 1:5000 IF 1:50-200

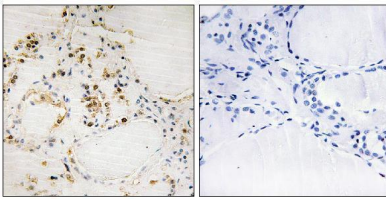
Anti-Phospho-Bcl-2 (S87) Antibody (A00040S87) Images



Western Blot analysis of 293T-UV cells using Phospho-Bcl-2 (S87) Polyclonal Antibody diluted at 1:500



Western blot analysis of lysates from HeLa cells treated with nocodazole 1ug/ml 18h, using BCL-2 (Phospho-Ser87) Antibody. The lane on the right is blocked with the phospho peptide.



Immunohistochemistry analysis of paraffin-embedded human thyroid gland, using BCL-2 (Phospho-Ser87) Antibody. The picture on the right is blocked with the phospho peptide.

Submit a product review to [Biocompare.com](https://www.biocompare.com)

Submit a review of this product to [Biocompare.com](https://www.biocompare.com) to receive a \$20 Amazon.com giftcard! Your reviews help your fellow scientists make the right decisions. Thank you for your contribution.



Anti-Phospho-Bcl-2 (S87) Antibody

For Research Use Only. Not for use in diagnostic procedures.