

Anti-Caspase-8 CASP8 Antibody

Catalog Number: A00042-4

About CASP8

Caspases are a family of cysteine proteases that can be divided into the apoptotic and inflammatory caspase subfamilies. Unlike the apoptotic caspases, members of the inflammatory subfamily are generally not involved in cell death but are associated with the immune response to microbial pathogens. The apoptotic subfamily can be further divided into initiator caspases, which are activated in response to death signals, and executioner caspases, which are activated by the initiator caspases and are responsible for cleavage of cellular substrates that ultimately lead to cell death. Caspase-8 is an initiator caspase that was identified as a member of the Fas/APO-1 death-inducing signaling complex. The adaptor molecule FADD couples procaspase-8 to the Fas receptor death domain; subsequent oligomerization promotes procaspase-8 autoactivation. FLIP, a catalytically inactive caspase-8-like molecule inhibits these interactions and thus can inhibit apoptosis.

Overview

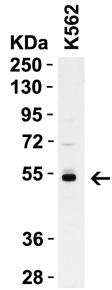
Product Name	Anti-Caspase-8 CASP8 Antibody
Reactive Species	Human, Mouse, Rat
Description	Boster Bio Anti-Caspase-8 CASP8 Antibody (Catalog # A00042-4). Tested in ELISA, WB, IHC-P, ICC, IF applications. This antibody reacts with Human, Mouse, Rat.
Application	ELISA, IF, IHC-P, ICC, WB
Clonality	Polyclonal
Formulation	Caspase-8 Antibody is supplied in PBS containing 0.02% sodium azide.
Storage Instructions	Caspase-8 antibody can be stored at 4°C up to one year. Antibodies should not be exposed to prolonged high temperatures.
Host	Rabbit
Uniprot ID	Q14790

Technical Details

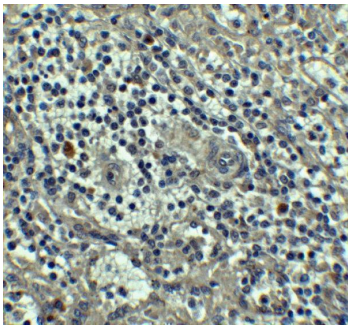
Immunogen	Caspase-8 antibody was raised against a 16 amino acid synthetic peptide from near the carboxy terminus of human Caspase-8 isoform A. The immunogen is located within the last 50 amino acids of Caspase-8.
Predicted Reactive Species	Bovine, Pig
Cross Reactivity	Depending on cell lines or tissues used, either full-length or other cleavage products may be observed.
Isotype	IgG
Form	Liquid

Concentration	1 mg/mL
Purification	Caspase-8 Antibody is affinity chromatography purified via peptide column.
Suggested Dilutions	<p>Caspase-8 antibody can be used for the detection of caspase-8 by Western blot at 0.5 to 2 ug/mL. Antibody can also be used for immunocytochemistry starting at 2 ug/mL and immunohistochemistry starting at 5 ug/mL. For immunofluorescence start at 20 ug/mL.</p> <p>Antibody validated: Western Blot in human, mouse, and rat samples; Immunohistochemistry in human samples; Immunocytochemistry in human samples and Immunofluorescence in human samples. All other applications and species not yet tested. Optimal dilutions for each application should be determined by the researcher.</p>

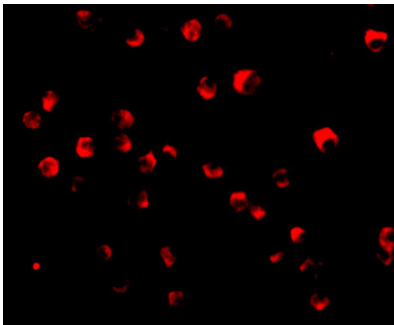
Anti-Caspase-8 CASP8 Antibody (A00042-4) Images



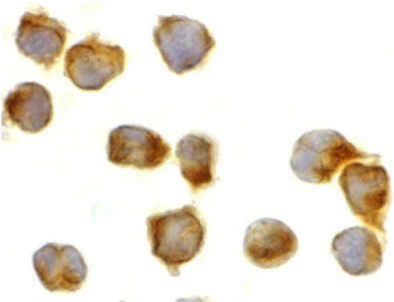
WB Validation in Human K562 Cells Loading: 15 ug of K562 cell lysate Antibodies: Casp8 A00042-4, 1 ug/mL, 1 h incubation at RT in 5% NFDm/TBST. Secondary: Goat Anti-Rabbit IgG HRP conjugate at 1:10000 dilution.



Immunohistochemistry of Caspase-8 in human spleen tissue with Caspase-8 antibody at 5 ug/mL.

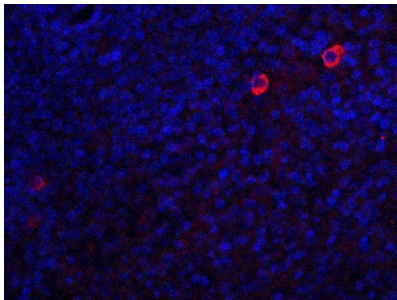
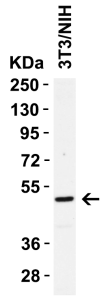


Immunofluorescence of Caspase-8 in Jurkat cells with Caspase-8 antibody at 20 ug/mL.

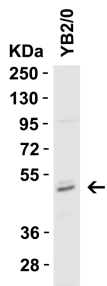


Immunocytochemistry of caspase-8 in Jurkat cells with caspase-8 antibody at 2 ug/mL.

WB Validation in Mouse 3T3/NIH Cells Loading: 15 ug of 3T3/NIH cell lysate Antibodies: Casp8 A00042-4, 1 ug/mL, 1 h incubation at RT in 5% NFDm/TBST. Secondary: Goat Anti-Rabbit IgG HRP conjugate at 1:10000 dilution.



Immunofluorescence of Caspase-8 in human spleen tissue with Caspase-8 antibody at 20 ug/ml. Red: Caspase-8 Antibody (A00042-4) Blue: DAPI staining



WB Validation in Rat YB2/O Cells Loading: 15 ug of YB2/O cell lysate Antibodies: Casp8 A00042-4, 1 ug/mL, 1 h incubation at RT in 5% NFDm/TBST. Secondary: Goat Anti-Rabbit IgG HRP conjugate at 1:10000 dilution.

Submit a product review to Biocompare.com

Submit a review of this product to Biocompare.com to receive a \$20 Amazon.com giftcard! Your reviews help your fellow scientists make the right decisions. Thank you for your contribution.



Anti-Caspase-8 CASP8 Antibody

For Research Use Only. Not for use in diagnostic procedures.