

## Anti-Cleaved-Caspase-8 p18 (S217) CASP8 Antibody

Catalog Number: A00042S217

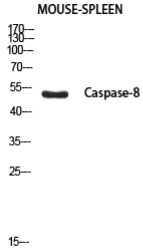
### Overview

Product Name	Anti-Cleaved-Caspase-8 p18 (S217) CASP8 Antibody
Reactive Species	Human, Mouse, Rat
Description	Boster Bio Anti-Cleaved-Caspase-8 p18 (S217) CASP8 Antibody catalog # A00042S217. Tested in ELISA, IF, WB applications. This antibody reacts with Human.
Application	ELISA, WB
Clonality	Polyclonal
Formulation	Liquid in PBS containing 50% glycerol, 0.5% stabilizing protein and 0.02% sodium azide. *This antibody is supplied in a stabilized formulation. Compatibility with conjugation reactions depends on the chemistry of the conjugation method used. For conjugation methods that are not compatible with the stabilizing components present in this formulation, a carrier-free antibody format is required.
Storage Instructions	Store at -20°C for one year. For short term storage and frequent use, store at 4°C for up to one month. Avoid repeated freeze-thaw cycles.
Host	Rabbit
Uniprot ID	Q14790

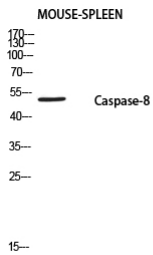
### Technical Details

Immunogen	Synthesized peptide derived from Cleaved-Caspase-8 p18 (S217) . at AA range: 170-250
Isotype	IgG
Form	Liquid
Concentration	1 mg/ml
Purification	The antibody was affinity-purified from rabbit antiserum by affinity-chromatography using epitope-specific immunogen.
Suggested Dilutions	WB 1:500-1:2000 ELISA 1:10000

## Anti-Cleaved-Caspase-8 p18 (S217) CASP8 Antibody (A00042S217) Images



Western blotting validation for Anti-Cleaved-Caspase-8 p18 (S217) CASP8 Antibody A00042S217 Western Blot (WB) analysis of Mouse Spleen using Cleaved-Caspase-8 p18 (S217) antibody. Electrophoresis was performed on a SDS-PAGE gel. To determine SDS-PAGE gel concentration



Western blotting validation for Anti-Cleaved-Caspase-8 p18 (S217) CASP8 Antibody A00042S217 Western Blot (WB) analysis of Mouse Spleen using Caspase-8 P18 antibody. Electrophoresis was performed on a SDS-PAGE gel. To determine SDS-PAGE gel concentration

### Submit a product review to Biocompare.com

Submit a review of this product to Biocompare.com to receive a \$20 Amazon.com giftcard! Your reviews help your fellow scientists make the right decisions. Thank you for your contribution.



Anti-Cleaved-Caspase-8 p18 (S217) CASP8 Antibody

For Research Use Only. Not for use in diagnostic procedures.