

Anti-EZH2 Antibody

Catalog Number: A00050

About EZH2

EZH2 was initially identified as a homolog of the drosophila Enhancer of Zeste through exon trap screening of chromosome 21. Both EZH2 and the related protein EZH1 can form complexes with the noncanonical Polycomb repressive complex-2 (PRC2) and maintain repressive chromatin, but the PRC2-EZH1 complex mediates methylation of histone H3. Both EZH1 and EZH2 are thought to function in the maintenance of embryonic stem cell pluripotency and plasticity and recently have been shown to be essential for hair follicle homeostasis and wound repair. Overexpression of EZH2 has been reported as a marker for advanced and metastatic cancers.

Overview

Product Name	Anti-EZH2 Antibody
Reactive Species	Human, Mouse
Description	Boster Bio Anti-EZH2 Antibody (Catalog # A00050). Tested in ELISA, WB, ICC, IF applications. This antibody reacts with Human, Mouse.
Application	ELISA, IF, ICC, WB
Clonality	Polyclonal
Formulation	EZH2 Antibody is supplied in PBS containing 0.02% sodium azide.
Storage Instructions	EZH2 antibody can be stored at 4°C for three months and -20°C, stable for up to one year. Avoid repeated freeze-thaw cycles. Antibodies should not be exposed to prolonged high temperatures.
Host	Rabbit
Uniprot ID	Q15910

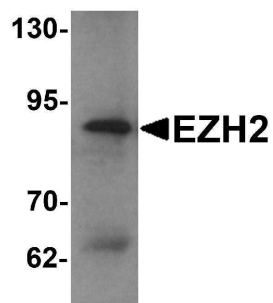
Technical Details

Immunogen	EZH2 antibody was raised against a 17 amino acid synthetic peptide near the amino terminus of human EZH2. The immunogen is located within amino acids 190 - 240 of EZH2.
Predicted Reactive Species	Bovine, Pig
Cross Reactivity	Multiple isoforms of EZH2 are known to exist. EZH2 antibody is predicted to not cross-react with EZH1.
Isotype	IgG
Form	Liquid
Concentration	1 mg/mL
Purification	EZH2 Antibody is affinity chromatography purified via peptide column.

Suggested Dilutions

EZH2 antibody can be used for detection of EZH2 by Western blot at 1 ug/mL. Antibody can also be used for immunocytochemistry starting at 10 ug/mL. For immunofluorescence start at 20 ug/mL. Antibody validated: Western Blot in human samples; Immunocytochemistry in human samples and Immunofluorescence in human samples. All other applications and species not yet tested. Optimal dilutions for each application should be determined by the researcher.

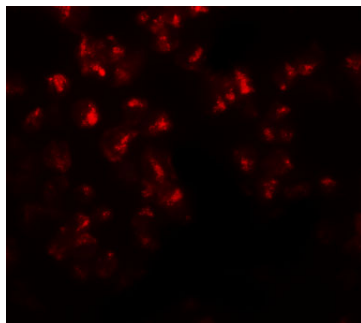
Anti-EZH2 Antibody (A00050) Images



Western blot analysis of EZH2 in 293 cell lysate with EZH2 antibody at 1 ug/mL.



Immunocytochemistry of EZH2 in 293 cells with EZH2 antibody at 10 ug/mL.



Immunofluorescence of EZH2 in 293 cells with EZH2 antibody at 20 ug/mL.

Submit a product review to [Biocompare.com](https://www.biocompare.com)

Submit a review of this product to [Biocompare.com](https://www.biocompare.com) to receive a \$20 Amazon.com giftcard! Your reviews help your fellow scientists make the right decisions. Thank you for your contribution.



Anti-EZH2 Antibody

For Research Use Only. Not for use in diagnostic procedures.