

Anti-Stromal cell-derived factor 1 CXCL12 Antibody

Catalog Number: A00053-3

About CXCL12

The CXCL12 protein, also known as SDF1, is a stromal cell-derived alpha chemokine member of the intercrine family. CXCL12 functions as the ligand for the G-protein coupled receptor, chemokine (C-X-C motif) receptor 4 (CXCR4) and CXCR7, and plays a role in many diverse cellular functions, including embryogenesis, immune surveillance, inflammation response, tissue homeostasis, and tumor growth and metastasis (reviewed in 1). Mutations in this gene are associated with resistance to human immunodeficiency virus type 1 infections (2).

Overview

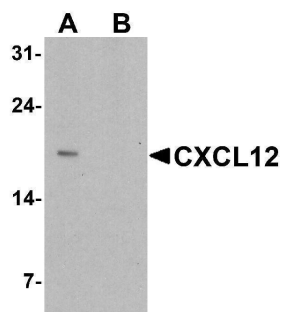
Product Name	Anti-Stromal cell-derived factor 1 CXCL12 Antibody
Reactive Species	Human, Mouse
Description	Boster Bio Anti-Stromal cell-derived factor 1 CXCL12 Antibody (Catalog # A00053-3). Tested in ELISA, WB, ICC applications. This antibody reacts with Human, Mouse.
Application	ELISA, ICC, WB
Clonality	Polyclonal
Formulation	CXCL12 antibody is supplied in PBS containing 0.02% sodium azide.
Storage Instructions	CXCL12 antibody can be stored at 4°C for three months and -20°C, stable for up to one year.
Host	Rabbit
Uniprot ID	P48061

Technical Details

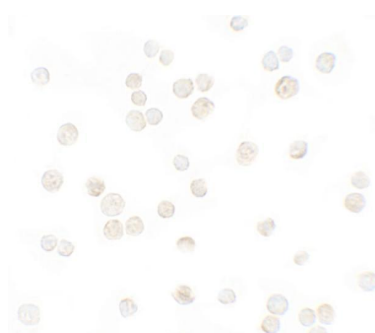
Immunogen	CXCL12 antibody was raised against a 16 amino acid peptide near the center of human CXCL12. The immunogen is located within the last 50 amino acids of CXCL12.
Predicted Reactive Species	Bovine, Pig
Cross Reactivity	CXCL12 antibody is human and mouse reactive. Multiple isoforms of CXCL12 are known to exist.
Isotype	IgG
Form	Liquid
Concentration	1 mg/mL
Purification	CXCL12 antibody is affinity chromatography purified via peptide column.
Suggested Dilutions	CXCL12 antibody can be used for detection of CXCL12 by Western blot at 1 - 2 ug/ml. Antibody can also be used for Immunocytochemistry starting at 5 ug/mL.

Antibody validated: Western Blot in human samples and Immunocytochemistry in human samples.
All other applications and species not yet tested. Optimal dilutions for each application should be determined by the researcher.

Anti-Stromal cell-derived factor 1 CXCL12 Antibody (A00053-3) Images



Western blot analysis of CXCL12 in HeLa cell lysate with CXCL12 antibody at 1 ug/ml in (A) the absence and (B) the presence of blocking peptide.



Immunocytochemistry of CXCL12 in HeLa cells with CXCL12 antibody at 5 ug/mL.

Submit a product review to [Biocompare.com](https://www.biocompare.com)

Submit a review of this product to [Biocompare.com](https://www.biocompare.com) to receive a \$20 Amazon.com giftcard! Your reviews help your fellow scientists make the right decisions. Thank you for your contribution.



Anti-Stromal cell-derived factor 1 CXCL12 Antibody

For Research Use Only. Not for use in diagnostic procedures.