

Anti-MDM2 (F414) Antibody

Catalog Number: A00054

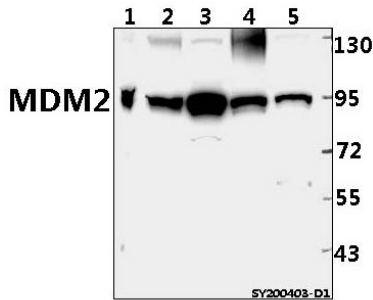
Overview

Product Name	Anti-MDM2 (F414) Antibody
Reactive Species	Human, Mouse, Rat
Description	Boster Bio Anti-MDM2 (F414) Antibody catalog # A00054. Tested in WB,IHC,IF applications. This antibody reacts with Human,Mouse,Rat.
Application	IF, IHC, WB
Clonality	Polyclonal
Formulation	Rabbit IgG, 1mg/ml in PBS with 0.02% sodium azide, 50% glycerol, pH7.2
Storage Instructions	Store at -20°C for one year. For short term storage and frequent use, store at 4°C for up to one month. Avoid repeated freeze-thaw cycles.
Host	Rabbit
Uniprot ID	Q00987

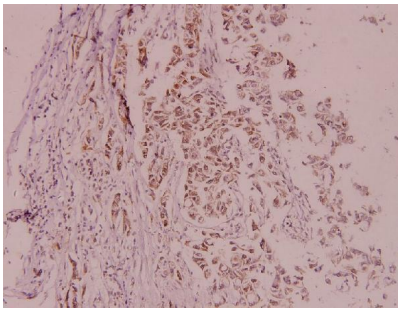
Technical Details

Immunogen	Synthetic peptide, corresponding to amino acids 385-430 of Human MDM2.
Cross Reactivity	No cross reactivity with other proteins.
Isotype	IgG
Form	Liquid
Concentration	1 mg/ml
Purification	The antibody was affinity-purified from rabbit antiserum by affinity-chromatography using epitope-specific immunogen and the purity is > 95% (by SDS-PAGE).
Suggested Dilutions	WB: 1:500-1:1000 IHC: 1:50-1:200 IF: 1:50-1:200

Anti-MDM2 (F414) Antibody (A00054) Images



Western blot (WB) analysis of MDM2 pAb at 1:500 dilution
Lane1:HEK293T whole cell lysate(40ug) Lane2:A549 whole cell lysate(40ug) Lane3:HCT116 whole cell lysate(40ug)
Lane4:HepG2 whole cell lysate(40ug) Lane5:Panc1 whole cell lysate(40ug)



Immunohistochemistry (IHC) analyzes of MDM2 (F414) pAb in paraffin-embedded human breast carcinoma tissue at 1:100.

1 Publications Citing This Product

1. PubMed ID: -, Jiang X,Yuan J,Dou Y,Zeng D, Xiao S.Lipopolysaccharide Affects the Proliferation and Glucose Metabolism of Cervical Cancer Cells Through the FRA1/MDM2/p53 Pathway.Int J Med Sci 2021;18(4): 1030-1038.doi:10. 7150/ijms.47360.

Visit bosterbio.com/anti-mdm2-f414-antibody-a00054-boster.html to see all 1 publications.

Submit a product review to Biocompare.com

Submit a review of this product to Biocompare.com to receive a \$20 Amazon.com giftcard! Your reviews help your fellow scientists make the right decisions. Thank you for your contribution.



Anti-MDM2 (F414) Antibody

For Research Use Only. Not for use in diagnostic procedures.