

## Anti-C-C motif chemokine 2 CCL2 Antibody

Catalog Number: A00056

### About CCL2

CCL2, also known as monocyte chemoattractant protein 1 (MCP1), belongs to the intercrine beta (chemokine CC) family. It is produced by a variety of cell types and is a potent chemoattractant for monocytes, memory T lymphocytes, and natural killer (NK) cells. It is upregulated during infection and inflammation. CCL2 is a potent basophil activator but does not affect eosinophils, whereas the related protein MCP2 stimulates both eosinophils and basophils. MCP3 has been shown to have the broadest range of influence. CCL2 has been implicated in the pathogenesis of diseases characterized by monocytic infiltrates, like psoriasis, rheumatoid arthritis or atherosclerosis.

### Overview

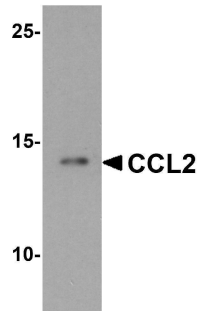
Product Name	Anti-C-C motif chemokine 2 CCL2 Antibody
Reactive Species	Human, Mouse, Rat
Description	Boster Bio Anti-C-C motif chemokine 2 CCL2 Antibody (Catalog # A00056). Tested in ELISA, WB, IHC-P, IF applications. This antibody reacts with Human, Mouse, Rat.
Application	ELISA, IF, IHC-P, WB
Clonality	Polyclonal
Formulation	CCL2 Antibody is supplied in PBS containing 0.02% sodium azide.
Storage Instructions	CCL2 antibody can be stored at 4°C for three months and -20°C, stable for up to one year.
Host	Rabbit
Uniprot ID	P13500

### Technical Details

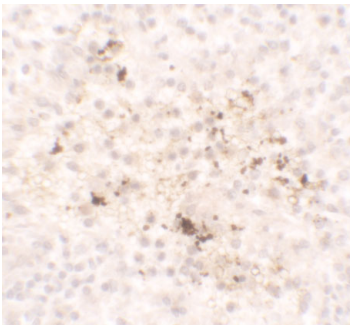
Immunogen	Rabbit polyclonal CCL2 antibody was raised against a 17 amino acid peptide near the carboxy terminus of human CCL2. The immunogen is located within the last 50 amino acids of CCL2.
Predicted Reactive Species	Bovine, Guinea Pig, Horse, Pig, Rabbit
Isotype	IgG
Form	Liquid
Concentration	1 mg/mL
Purification	CCL2 Antibody is affinity chromatography purified via peptide column.
Suggested Dilutions	CCL2 antibody can be used for detection of CCL2 by Western blot at 1 - 2 ug/mL. Antibody validated: Western Blot in human samples; Immunohistochemistry in human samples and Immunofluorescence in human samples. All other applications and species not yet tested. Optimal

dilutions for each application should be determined by the researcher.

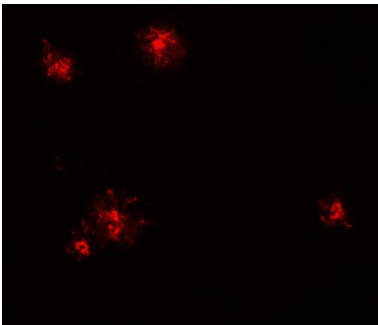
## Anti-C-C motif chemokine 2 CCL2 Antibody (A00056) Images



Western blot analysis of CCL2 in K562 cell lysate with CCL2 antibody at 1 ug/mL.



Immunohistochemistry of CCL2 in human spleen tissue with CCL2 antibody at 5 ug/ml.



Immunofluorescence of CCL2 in human spleen tissue with CCL2 antibody at 20 ug/ml.

## 5 Publications Citing This Product

1. PubMed ID: 10.1111/jcmm.13466, Complement 5a $\alpha$ -mediated trophoblasts dysfunction is involved in the development of pre-eclampsia
2. PubMed ID: 10.1016/j.trsl.2021.10.001, Gut microbial metabolite TMAO increases peritoneal inflammation and peritonitis risk in peritoneal dialysis patients
3. PubMed ID: 25210730, Salusin- $\gamma$ , but Not Salusin- $\beta$ , Promotes Human Umbilical Vein Endothelial Cell Inflammation via the p38 MAPK/JNK-NF- $\kappa$ B Pathway

Visit [bosterbio.com/anti-c-c-motif-chemokine-2-ccl2-antibody-a00056-boster.html](https://www.bosterbio.com/anti-c-c-motif-chemokine-2-ccl2-antibody-a00056-boster.html) to see all 5 publications.

## Submit a product review to Biocompare.com

Submit a review of this product to Biocompare.com to receive a \$20 Amazon.com giftcard! Your



reviews help your fellow scientists make the right decisions. Thank you for your contribution.

Anti-C-C motif chemokine 2 CCL2 Antibody

For Research Use Only. Not for use in diagnostic procedures.