

Anti-CCL2 Antibody Picoband®

Catalog Number: A00056-4

About Ccl2

Monocyte chemoattractant protein-1 (MCP-1), a member of the chemokine (chemotactic cytokine) family, is a potent monocyte agonist that is upregulated by oxidized lipids. MCP-1 is also known as CCL2, SCYA2, MCAF. MCAF is a member of family of factors involved in immune and inflammatory responses. The amino acid sequence deduced from the nucleotide sequence reveals the primary structure of the MCAF precursor to be composed of a putative signal peptide sequence of 23 amino acid residues and a mature MCAF sequence of 76 amino acid residues. MCP-1 plays a unique and crucial role in the initiation of atherosclerosis and may provide a new therapeutic target in this disorder. Human MCP-1 is a 8.7KDa non-glycoprotein, consisting of 99 amino acids in precursor form and 76 amino acids in mature form.

Overview

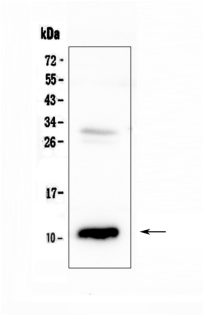
Product Name	Anti-CCL2 Antibody Picoband®
Reactive Species	Mouse, Rat
Description	Boster Bio Anti-CCL2 Antibody Picoband® catalog # A00056-4. Tested in ELISA, WB applications. This antibody reacts with Mouse, Rat. The brand Picoband indicates this is a premium antibody that guarantees superior quality, high affinity, and strong signals with minimal background in Western blot applications. Only our best-performing antibodies are designated as Picoband, ensuring unmatched performance.
Application	WB, ELISA (Cap)
Clonality	Polyclonal
Formulation	Each vial contains 4mg Trehalose, 0.9mg NaCl and 0.2mg Na ₂ HPO ₄ .
Storage Instructions	Store at -20°C for one year from date of receipt. After reconstitution, at 4°C for one month. It can also be aliquotted and stored frozen at -20°C for six months. Avoid repeated freeze-thaw cycles.
Host	Rabbit
Uniprot ID	P14844

Technical Details

Immunogen	E. coli-derived rat CCL2 recombinant protein (Position: Q24-R96).
Recommended Detection Systems	Boster recommends Enhanced Chemiluminescent Kit with anti-Rabbit IgG (EK1002) for Western blot.
Cross Reactivity	No cross-reactivity with other proteins.
Isotype	Rabbit IgG
Form	Lyophilized

Concentration	Adding 0.2 ml of distilled water will yield a concentration of 500 ug/ml.
Purification	Immunogen affinity purified.
Suggested Dilutions	Western blot, 0.1-0.5ug/ml ELISA (Cap), 1-5ug/ml

Anti-CCL2 Antibody Picoband® (A00056-4) Images



Western blot analysis of CCL2 using anti-CCL2 antibody (A00056-4). Electrophoresis was performed on a 5-20% SDS-PAGE gel at 70V (Stacking gel) / 90V (Resolving gel) for 2-3 hours. The sample well of each lane was loaded with 50ug of sample under reducing conditions. Lane 1: rat pancreas tissue lysates. After Electrophoresis, proteins were transferred to a Nitrocellulose membrane at 150mA for 50-90 minutes. Blocked the membrane with 5% Non-fat Milk/TBS for 1.5 hour at RT. The membrane was incubated with rabbit anti-CCL2 antigen affinity purified polyclonal antibody (Catalog # A00056-4) at 0.5 ug/mL overnight at 4°C, then washed with TBS-0.1%Tween 3 times with 5 minutes each and probed with a goat anti-rabbit IgG-HRP secondary antibody at a dilution of 1:10000 for 1.5 hour at RT. The signal is developed using an Enhanced Chemiluminescent detection (ECL) kit (Catalog # EK1002) with Tanon 5200 system. A specific band was detected for CCL2 at approximately 11KD. The expected band size for CCL2 is at 11KD.

16 Publications Citing This Product

1. PubMed ID: 10.3390/ijms20184389, Effect of Tff3 Deficiency and ER Stress in the Liver
2. PubMed ID: 10.1016/j.jep.2013.11.015, The anti-inflammation effect of Moutan Cortex on advanced glycation end products-induced rat mesangial cells dysfunction and High-glucose-fat diet and streptozotocin-induced diabetic nephropathy rats
3. PubMed ID: 10.1038/aps.2010.187, Fluoxetine inhibited extracellular matrix of pulmonary artery and inflammation of lungs in monocrotaline-treated rats

Visit bosterbio.com/anti-ccl2-picoband-trade-antibody-a00056-4-boster.html to see all 16 publications.

Submit a product review to Biocompare.com

Submit a review of this product to Biocompare.com to receive a \$20 Amazon.com giftcard! Your reviews help your fellow scientists make the right decisions. Thank you for your contribution.



Anti-CCL2 Antibody

For Research Use Only. Not for use in diagnostic procedures.