

Anti-Estrogen receptor ESR1 Antibody

Catalog Number: A00057

About ESR1

Estrogen receptors (ER) are members of the steroid/thyroid hormone receptor superfamily of ligand-activated transcription factors (1). Estrogen receptors, including ESR1, also known as ER-alpha and ESR2 (ER-beta), contain DNA binding and ligand binding domains and are critically involved in regulating the normal function of reproductive tissues. ESR1 is a widely expressed nuclear protein and serves as a strong activator of estrogen responsive genes (1,2). Phosphorylation of serines 104 and 106, located in the N-terminal transcription activation function-1 domain (AF-1), plays a large role in regulating ER alpha activity (3).

Overview

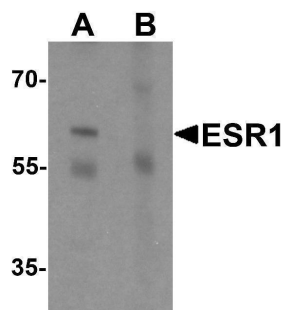
Product Name	Anti-Estrogen receptor ESR1 Antibody
Reactive Species	Human, Mouse, Rat
Description	Boster Bio Anti-Estrogen receptor ESR1 Antibody (Catalog # A00057). Tested in ELISA, WB, IHC-P, IF applications. This antibody reacts with Human, Mouse, Rat.
Application	ELISA, IF, IHC-P, WB
Clonality	Polyclonal
Formulation	ESR1 Antibody is supplied in PBS containing 0.02% sodium azide.
Storage Instructions	ESR1 antibody can be stored at 4°C for three months and -20°C, stable for up to one year.
Host	Rabbit
Uniprot ID	P03372

Technical Details

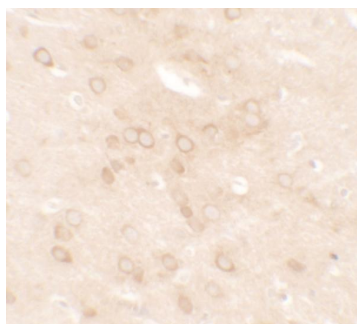
Immunogen	ESR1 antibody was raised against an 18 amino acid peptide near the center of human ESR1. The immunogen is located within amino acids 250 - 300 of ESR1.
Predicted Reactive Species	Bovine, Horse, Pig
Cross Reactivity	ESR1 antibody is human, mouse and rat reactive.
Isotype	IgG
Form	Liquid
Concentration	1 mg/mL
Purification	ESR1 Antibody is affinity chromatography purified via peptide column.
Suggested Dilutions	ESR1 antibody can be used for detection of ESR1 by Western blot at 1 - 2 ug/mL.

Antibody validated: Western Blot in rat samples; Immunohistochemistry in rat samples and Immunofluorescence in rat samples. All other applications and species not yet tested. Optimal dilutions for each application should be determined by the researcher.

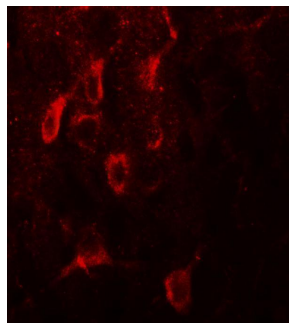
Anti-Estrogen receptor ESR1 Antibody (A00057) Images



Western blot analysis of ESR1 in rat brain tissue lysate with ESR1 antibody at 1 ug/mL in (A) the absence and (B) the presence of blocking peptide.



Immunohistochemistry of ESR1 in rat brain tissue with ESR1 antibody at 5 ug/mL.



Immunofluorescence of ESR1 in rat brain tissue with ESR1 antibody at 20 ug/mL.

Submit a product review to [Biocompare.com](https://www.biocompare.com)

Submit a review of this product to [Biocompare.com](https://www.biocompare.com) to receive a \$20 Amazon.com giftcard! Your reviews help your fellow scientists make the right decisions. Thank you for your contribution.



Anti-Estrogen receptor ESR1 Antibody

For Research Use Only. Not for use in diagnostic procedures.