

## Anti-Phospho-E alpha (S106) ESR1 Antibody

Catalog Number: A00057S106-1

### Overview

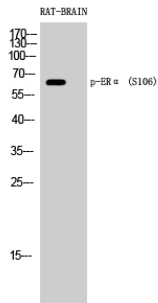
Product Name	Anti-Phospho-E alpha (S106) ESR1 Antibody
Reactive Species	Human, Mouse, Rat
Description	Boster Bio Anti-Phospho-E alpha (S106) ESR1 Antibody catalog # A00057S106-1. Tested in WB, IHC, IF, ELISA applications. This antibody reacts with Human, Mouse, Rat.
Application	ELISA, IF, IHC, WB
Clonality	Polyclonal
Formulation	Liquid in PBS containing 50% glycerol, 0.5% stabilizing protein and 0.02% sodium azide. *This antibody is supplied in a stabilized formulation. Compatibility with conjugation reactions depends on the chemistry of the conjugation method used. For conjugation methods that are not compatible with the stabilizing components present in this formulation, a carrier-free antibody format is required.
Storage Instructions	Store at -20°C for one year. For short term storage and frequent use, store at 4°C for up to one month. Avoid repeated freeze-thaw cycles.
Host	Rabbit
Uniprot ID	P03372

### Technical Details

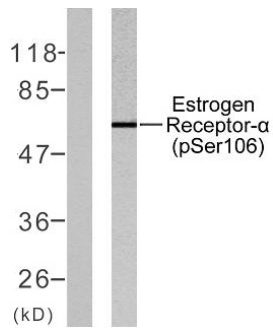
Immunogen	The antiserum was produced against synthesized peptide derived from human Estrogen Receptor-alpha around the phosphorylation site of Ser106. AA range:71-120
Cross Reactivity	No cross reactivity with other proteins.
Isotype	IgG
Form	Liquid
Concentration	1 mg/ml
Purification	The antibody was affinity-purified from rabbit antiserum by affinity-chromatography using epitope-specific immunogen.
Suggested Dilutions	WB 1:500-1:2000 IHC 1:100-1:300 IF 1:200-1:1000 ELISA 1:40000



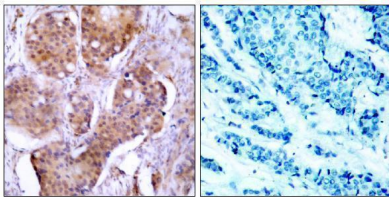
## Anti-Phospho-E alpha (S106) ESR1 Antibody (A00057S106-1) Images



Western Blot analysis of RAT-BRAIN cells using Phospho-ERalpha (S106) Polyclonal Antibody diluted at 1:500



Western blot analysis of lysates from MCF7 cells, using Estrogen Receptor-alpha (Phospho-Ser106) Antibody. The lane on the left is blocked with the phospho peptide.



Immunohistochemistry analysis of paraffin-embedded human breast carcinoma, using Estrogen Receptor-alpha (Phospho-Ser106) Antibody. The picture on the right is blocked with the phospho peptide.

### Submit a product review to [Biocompare.com](https://www.biocompare.com)

Submit a review of this product to [Biocompare.com](https://www.biocompare.com) to receive a \$20 Amazon.com giftcard! Your reviews help your fellow scientists make the right decisions. Thank you for your contribution.



Anti-Phospho-E alpha (S106) ESR1 Antibody

For Research Use Only. Not for use in diagnostic procedures.