

Anti-Smad3 (phospho-S213) Antibody

Catalog Number: A00059S213

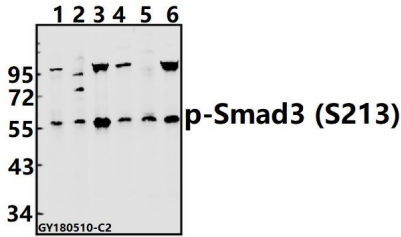
Overview

Product Name	Anti-Smad3 (phospho-S213) Antibody
Reactive Species	Human, Mouse, Rat
Description	Boster Bio Anti-Smad3 (phospho-S213) Antibody catalog # A00059S213. Tested in WB applications. This antibody reacts with Human, Mouse, Rat.
Application	WB
Clonality	Polyclonal
Formulation	Rabbit IgG, 1mg/ml in PBS with 0.02% sodium azide, 50% glycerol, pH7.2
Storage Instructions	Store at -20°C for one year. For short term storage and frequent use, store at 4°C for up to one month. Avoid repeated freeze-thaw cycles.
Host	Rabbit
Uniprot ID	P84022

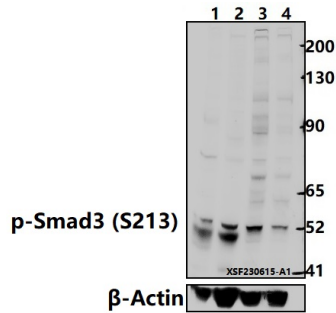
Technical Details

Immunogen	Synthetic phosphopeptide derived from human Smad3 around the phosphorylation site of Serine 213.
Cross Reactivity	No cross reactivity with other proteins.
Isotype	IgG
Form	Liquid
Concentration	1 mg/ml
Purification	The antibody was affinity-purified from rabbit antiserum by affinity-chromatography using epitope-specific immunogen and the purity is > 95% (by SDS-PAGE).
Suggested Dilutions	WB: 1:500-1:1000

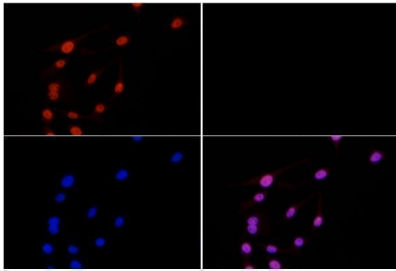
Anti-Smad3 (phospho-S213) Antibody (A00059S213) Images



Western blot (WB) analysis of p-Smad3 (S213) pAb at 1:500 dilution Lane1:Hela whole cell lysate(40ug) Lane2:HEK293T whole cell lysate(40ug) Lane3:Panc1 whole cell lysate(20ug) Lane4:LOVO whole cell lysate(40ug) Lane5:C6 whole cell lysate(40ug) Lane6:AML-12 whole cell lysate(40ug)



Western blot (WB) analysis of Smad3 (Phospho-S213) pAb at 1:500 dilution Lane1:AML-12 whole cell lysate(30ug) Lane2:PMVEC whole cell lysate(30ug) Lane3:HepG2 treated with TGF-beta(100 ng/ml,30 minutes) whole cell lysate(30ug) Lane4:HepG2 whole cell lysate(30ug)



Immunofluorescence analysis of HepG2 cells using Smad3 (phospho-S213) pAb at dilution of 1:200 (40x lens).

Submit a product review to [Biocompare.com](https://www.biocompare.com)

Submit a review of this product to [Biocompare.com](https://www.biocompare.com) to receive a \$20 Amazon.com giftcard! Your reviews help your fellow scientists make the right decisions. Thank you for your contribution.



Anti-Smad3 (phospho-S213) Antibody

For Research Use Only. Not for use in diagnostic procedures.