

Anti-Smad3 (phospho-S425) Antibody

Catalog Number: A00059S425

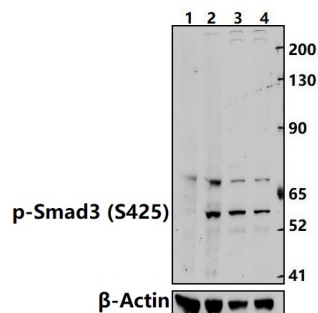
Overview

Product Name	Anti-Smad3 (phospho-S425) Antibody
Reactive Species	Human, Mouse, Rat
Description	Boster Bio Anti-Smad3 (phospho-S425) Antibody catalog # A00059S425. Tested in WB,IHC applications. This antibody reacts with Human,Mouse,Rat.
Application	IHC, WB
Clonality	Polyclonal
Formulation	Rabbit IgG, 1mg/ml in PBS with 0.02% sodium azide, 50% glycerol, pH7.2
Storage Instructions	Store at -20°C for one year. For short term storage and frequent use, store at 4°C for up to one month. Avoid repeated freeze-thaw cycles.
Host	Rabbit
Uniprot ID	P84022

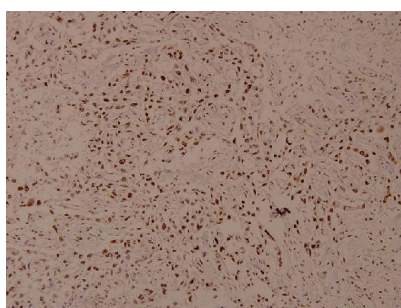
Technical Details

Immunogen	Synthetic phosphopeptide derived from human Smad3 around the phosphorylation site of Serine 425.
Cross Reactivity	No cross reactivity with other proteins.
Isotype	IgG
Form	Liquid
Concentration	1 mg/ml
Purification	The antibody was affinity-purified from rabbit antiserum by affinity-chromatography using epitope-specific immunogen and the purity is > 95% (by SDS-PAGE).
Suggested Dilutions	WB: 1:500-1:1000 IHC: 1:50-1:200

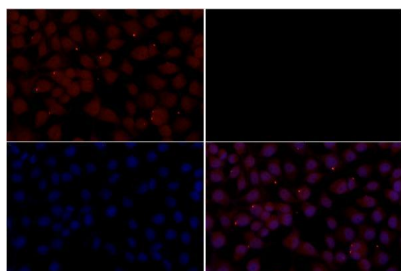
Anti-Smad3 (phospho-S425) Antibody (A00059S425) Images



Western blot (WB) analysis of Smad3 (phospho-Ser425) polyclonal antibody at 1:500 dilution Lane1:A549 treated with lambda-phosphatase whole cell lysate(30ug) Lane2:A549 whole cell lysate(30ug) Lane3:A549 treated with TGF-beta(10 ng/ml,30 minutes) whole cell lysate(30ug) Lane4:A549 whole cell lysate(30ug)



Immunohistochemistry (IHC) analyzes of p-Smad3 (S425) pAb in paraffin-embedded human breast carcinoma tissue at 1:100.



Immunofluorescence analysis of A549 cells using Smad3 (phospho-S425) pAb at dilution of 1:50 (40x lens).

Submit a product review to [Biocompare.com](https://www.biocompare.com)

Submit a review of this product to [Biocompare.com](https://www.biocompare.com) to receive a \$20 Amazon.com giftcard! Your reviews help your fellow scientists make the right decisions. Thank you for your contribution.



Anti-Smad3 (phospho-S425) Antibody

For Research Use Only. Not for use in diagnostic procedures.