

## Anti-HP Antibody (Center)

Catalog Number: A00062-3

### About HP

This gene encodes a preproprotein, which is processed to yield both alpha and beta chains, which subsequently combine as a tetramer to produce haptoglobin. Haptoglobin functions to bind free plasma hemoglobin, which allows degradative enzymes to gain access to the hemoglobin, while at the same time preventing loss of iron through the kidneys and protecting the kidneys from damage by hemoglobin. Mutations in this gene and/or its regulatory regions cause ahaptoglobinemia or hypohaptoglobinemia. This gene has also been linked to diabetic nephropathy, the incidence of coronary artery disease in type 1 diabetes, Crohn's disease, inflammatory disease behavior, primary sclerosing cholangitis, susceptibility to idiopathic Parkinson's disease, and a reduced incidence of Plasmodium falciparum malaria. A similar duplicated gene is located next to this gene on chromosome 16. Multiple transcript variants encoding different isoforms have been found for this gene.

### Overview

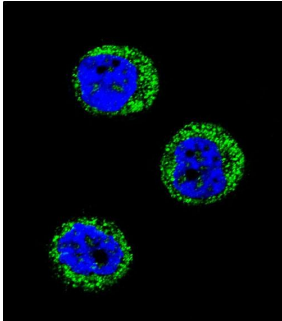
Product Name	Anti-HP Antibody (Center)
Reactive Species	Human, Mouse
Description	Boster Bio Anti-HP Antibody (Center) (Catalog # A00062-3). Tested in IHC-P-Leica, WB, IF, Flow Cytometry application(s). This antibody reacts with Human, Mouse.
Application	Flow Cytometry, IF, WB, IHC-P-Leica
Clonality	Polyclonal
Formulation	Purified polyclonal antibody supplied in PBS with 0.09% (W/V) sodium azide.
Storage Instructions	Maintain refrigerated at 2-8°C for up to 2 weeks. For long-term storage, store at -20°C in small aliquots to prevent freeze-thaw cycles.
Host	Rabbit
Uniprot ID	P00738

### Technical Details

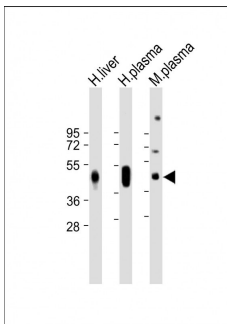
Immunogen	This HP antibody is generated from rabbits immunized with a KLH conjugated synthetic peptide between 296-322 amino acids from the Central region of human HP.
Predicted Reactive Species	Bovine, Chicken, Drosophila, Hamster, Horse, Monkey, Pig, Rabbit, Sheep, Xenopus
Recommended Detection Systems	Boster recommends Enhanced Chemiluminescent Kit with anti-Rabbit IgG (EK1002) for Western blot, and HRP Conjugated anti-Rabbit IgG Super Vision Assay Kit (SV0002-1) for IHC(P).
Cross Reactivity	No cross reactivity with other proteins.
Isotype	Rabbit IgG

Form	Liquid
Purification	This antibody is purified through a protein A column, followed by peptide affinity purification.
Suggested Dilutions	IF: 1:10-1:50 WB: 1:1000-1:2000 IHC-P-Leica: 1:500 FC: 1:10-1:50

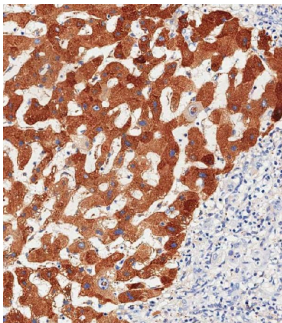
## Anti-HP Antibody (Center) (A00062-3) Images



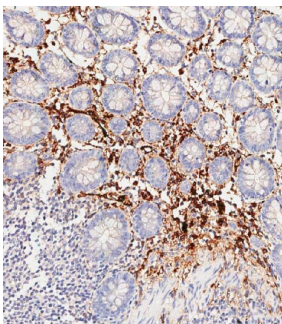
Confocal immunofluorescent analysis of HP Antibody (Center) with MDA-MB435 cell followed by Alexa Fluor 488-conjugated goat anti-rabbit IgG (green). DAPI was used to stain the cell nuclear (blue).



All lanes : Anti-HP Antibody (Center) at 1:1000-1:2000 dilution  
Lane 1: Human liver lysate  
Lane 2: Human plasma lysate  
Lane 3: Mouse plasma lysate  
Lysates/proteins at 20  $\mu$ g per lane. Secondary Goat Anti-Rabbit IgG, (H+L), Peroxidase conjugated at 1/10000 dilution. Predicted band size : 45 kDa  
Blocking/Dilution buffer: 5% NFD/MTBST.

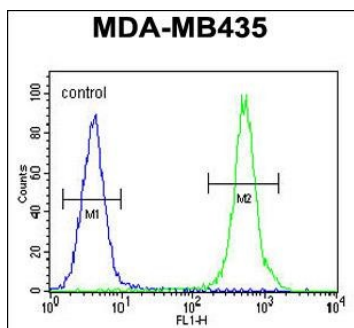


Immunohistochemical analysis of paraffin-embedded Human hepatocarcinoma tissue using A00062-3 performed on the Leica® BOND RXm. Tissue was fixed with formaldehyde at room temperature, antigen retrieval was by heat mediation with a EDTA buffer (pH9.0). Samples were incubated with primary antibody(1:500) for 1 hours at room temperature. A undiluted biotinylated CRF Anti-Polyvalent HRP Polymer antibody was used as the secondary antibody.



Immunohistochemical analysis of paraffin-embedded Human colon tissue using A00062-3 performed on the Leica® BOND RXm. Tissue was fixed with formaldehyde at room temperature, antigen retrieval was by heat mediation with a EDTA buffer (pH9.0). Samples were incubated with primary antibody(1:500) for 1 hours at room temperature. A undiluted biotinylated CRF Anti-Polyvalent HRP Polymer antibody was used as the secondary antibody.

HP Antibody (Center) flow cytometric analysis of MDA-MB435 cells (right histogram) compared to a negative control cell (left histogram). FITC-conjugated goat-anti-rabbit secondary antibodies were used for the analysis.



## Submit a product review to Biocompare.com

Submit a review of this product to Biocompare.com to receive a \$20 Amazon.com giftcard! Your reviews help your fellow scientists make the right decisions. Thank you for your contribution.



Anti-HP Antibody (Center)

For Research Use Only. Not for use in diagnostic procedures.