

Anti-CD28 Antibody

Catalog Number: A00065

About CD28

Estrogen receptors (ER) are members of the steroid/thyroid hormone receptor superfamily of ligand-activated transcription factors (1). Estrogen receptors, including ESR1, also known as ER-alpha and ESR2 (ER-beta), contain DNA binding and ligand binding domains and are critically involved in regulating the normal function of reproductive tissues. ESR1 is a widely expressed nuclear protein and serves as a strong activator of estrogen responsive genes (1,2). Phosphorylation of serines 104 and 106, located in the N-terminal transcription activation function-1 domain (AF-1), plays a large role in regulating ER alpha activity (3).

Overview

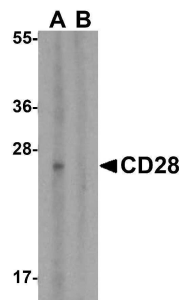
Product Name	Anti-CD28 Antibody
Reactive Species	Human
Description	Boster Bio Anti-CD28 Antibody (Catalog # A00065). Tested in ELISA, WB, IHC, IF applications. This antibody reacts with Human.
Application	ELISA, IF, IHC, WB
Clonality	Polyclonal
Formulation	CD28 Antibody is supplied in PBS containing 0.02% sodium azide.
Storage Instructions	CD28 antibody can be stored at 4°C for three months and -20°C, stable for up to one year. Avoid repeated freeze-thaw cycles. Antibodies should not be exposed to prolonged high temperatures.
Host	Rabbit
Uniprot ID	P10747

Technical Details

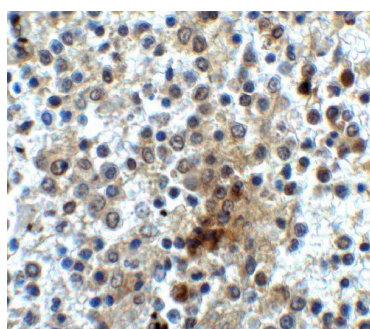
Immunogen	CD28 antibody was raised against a peptide corresponding to 18 amino acids near the carboxy terminus of human CD28. The immunogen is located within the last 50 amino acids of CD28.
Predicted Reactive Species	Bovine, Cat, Mouse, Rabbit, Rat
Isotype	IgG
Form	Liquid
Concentration	1 mg/mL
Purification	CD28 Antibody is affinity chromatography purified via peptide column.
Suggested Dilutions	CD28 antibody can be used for Western blot at 1ug/mL. Antibody can also be used for Immunohistochemistry at 2 ug/mL. For Immunofluorescence start at 20 ug/mL.

Antibody validated: Western Blot in human samples; Immunohistochemistry in human samples and Immunofluorescence in human samples. All other applications and species not yet tested. Optimal dilutions for each application should be determined by the researcher.

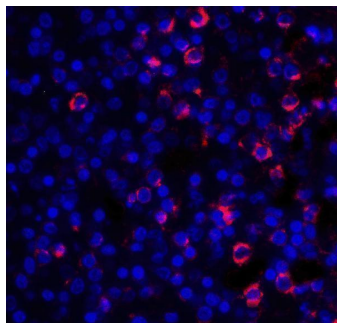
Anti-CD28 Antibody (A00065) Images



Western blot analysis of CD28 in human spleen tissue lysate with CD28 antibody at 1 ug/mL in (A) the absence and (B) the presence of blocking peptide.



Immunohistochemistry of CD28 in human spleen tissue with CD28 antibody at 2 ug/ml.



Immunofluorescence of CD28 in human spleen tissue with CD28 antibody at 20 ug/ml.

Submit a product review to [Biocompare.com](https://www.biocompare.com)

Submit a review of this product to [Biocompare.com](https://www.biocompare.com) to receive a \$20 Amazon.com giftcard! Your reviews help your fellow scientists make the right decisions. Thank you for your contribution.



Anti-CD28 Antibody

For Research Use Only. Not for use in diagnostic procedures.