

Anti-AR-beta ADRB2 Antibody

Catalog Number: A00072-2

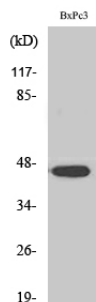
Overview

Product Name	Anti-AR-beta ADRB2 Antibody
Reactive Species	Human, Mouse, Rat
Description	Boster Bio Anti-AR-beta ADRB2 Antibody catalog # A00072-2. Tested in WB, IHC, IF, Flow Cytometry, ELISA applications. This antibody reacts with Human, Mouse, Rat.
Application	ELISA, Flow Cytometry, IF, IHC, WB
Clonality	Polyclonal
Formulation	Liquid in PBS containing 50% glycerol, 0.5% stabilizing protein and 0.02% sodium azide. *This antibody is supplied in a stabilized formulation. Compatibility with conjugation reactions depends on the chemistry of the conjugation method used. For conjugation methods that are not compatible with the stabilizing components present in this formulation, a carrier-free antibody format is required.
Storage Instructions	Store at -20°C for one year. For short term storage and frequent use, store at 4°C for up to one month. Avoid repeated freeze-thaw cycles.
Host	Rabbit
Uniprot ID	P07550

Technical Details

Immunogen	The antiserum was produced against synthesized peptide derived from human Adrenergic Receptor beta2. AA range:321-370
Cross Reactivity	No cross reactivity with other proteins.
Isotype	IgG
Form	Liquid
Concentration	1 mg/ml
Purification	The antibody was affinity-purified from rabbit antiserum by affinity-chromatography using epitope-specific immunogen.
Suggested Dilutions	WB 1:500-1:2000 IHC 1:100-1:300 IF 1:200-1:1000 FC 1:200-1:400 ELISA 1:5000

Anti-AR-beta ADRB2 Antibody (A00072-2) Images



Western blotting validation for Anti-AR-beta ADRB2 Antibody A00072-2 Western Blot (WB) analysis of specific cells using AR-beta2 polyclonal antibody. Electrophoresis was performed on a SDS-PAGE gel. To determine SDS-PAGE gel concentration

Submit a product review to Biocompare.com

Submit a review of this product to Biocompare.com to receive a \$20 Amazon.com giftcard! Your reviews help your fellow scientists make the right decisions. Thank you for your contribution.



Anti-AR-beta ADRB2 Antibody

For Research Use Only. Not for use in diagnostic procedures.