

Anti-Phospho-AR-beta (S346) ADRB2 Antibody

Catalog Number: A00072S346-1

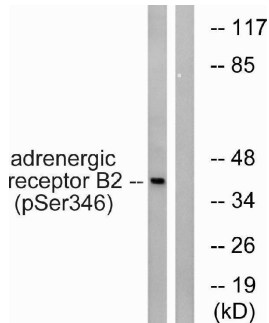
Overview

Product Name	Anti-Phospho-AR-beta (S346) ADRB2 Antibody
Reactive Species	Human, Mouse, Rat
Description	Boster Bio Anti-Phospho-AR-beta (S346) ADRB2 Antibody catalog # A00072S346-1. Tested in WB, IHC, IF, ELISA applications. This antibody reacts with Human, Mouse, Rat.
Application	ELISA, IF, IHC, WB
Clonality	Polyclonal
Formulation	Liquid in PBS containing 50% glycerol, 0.5% stabilizing protein and 0.02% sodium azide. *This antibody is supplied in a stabilized formulation. Compatibility with conjugation reactions depends on the chemistry of the conjugation method used. For conjugation methods that are not compatible with the stabilizing components present in this formulation, a carrier-free antibody format is required.
Storage Instructions	Store at -20°C for one year. For short term storage and frequent use, store at 4°C for up to one month. Avoid repeated freeze-thaw cycles.
Host	Rabbit
Uniprot ID	P07550

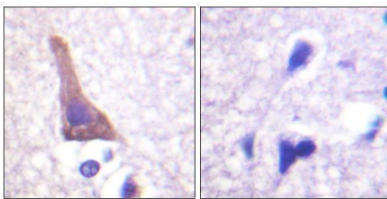
Technical Details

Immunogen	The antiserum was produced against synthesized peptide derived from human Adrenergic Receptor beta2 around the phosphorylation site of Ser346. AA range:321-370
Cross Reactivity	No cross reactivity with other proteins.
Isotype	IgG
Form	Liquid
Concentration	1 mg/ml
Purification	The antibody was affinity-purified from rabbit antiserum by affinity-chromatography using epitope-specific immunogen.
Suggested Dilutions	WB 1:500-1:2000 IHC 1:100-1:300 IF 1:200-1:1000 ELISA 1:20000

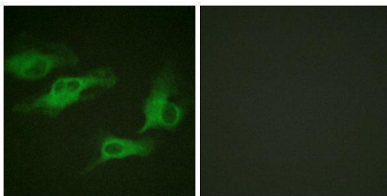
Anti-Phospho-AR-beta (S346) ADRB2 Antibody (A00072S346-1) Images



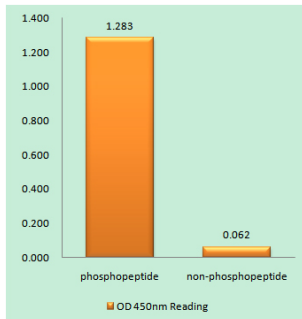
Western blot analysis of lysates from HepG2 cells treated with nocodazole 1ug/ml 16h, using Adrenergic Receptor beta2 (Phospho-Ser346) Antibody. The lane on the right is blocked with the phospho peptide.



Immunohistochemistry analysis of paraffin-embedded human brain, using Adrenergic Receptor beta2 (Phospho-Ser346) Antibody. The picture on the right is blocked with the phospho peptide.



Immunofluorescence analysis of HeLa cells, using Adrenergic Receptor beta2 (Phospho-Ser346) Antibody. The picture on the right is blocked with the phospho peptide.



Enzyme-Linked Immunosorbent Assay (Phospho-ELISA) for Immunogen Phosphopeptide (Phospho-left) and Non-Phosphopeptide (Phospho-right), using Adrenergic Receptor beta2 (Phospho-Ser346) Antibody

Submit a product review to [Biocompare.com](https://www.biocompare.com)

Submit a review of this product to [Biocompare.com](https://www.biocompare.com) to receive a \$20 Amazon.com giftcard! Your reviews help your fellow scientists make the right decisions. Thank you for your contribution.



Anti-Phospho-AR-beta (S346) ADRB2 Antibody

For Research Use Only. Not for use in diagnostic procedures.