

Anti-FKHR/FOXO1A (phospho-S256) Antibody

Catalog Number: A00073S256-1

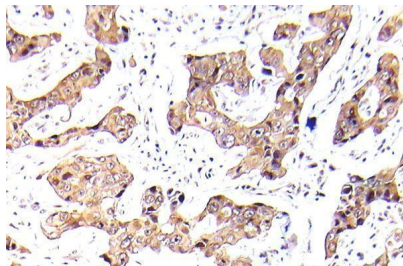
Overview

Product Name	Anti-FKHR/FOXO1A (phospho-S256) Antibody
Reactive Species	Human, Mouse, Rat
Description	Boster Bio Anti-FKHR/FOXO1A (phospho-S256) Antibody catalog # A00073S256-1. Tested in WB,IHC applications. This antibody reacts with Human,Mouse,Rat.
Application	IHC, WB
Clonality	Polyclonal
Formulation	Rabbit IgG, 1mg/ml in PBS with 0.02% sodium azide, 50% glycerol, pH7.2
Storage Instructions	Store at -20°C for one year. For short term storage and frequent use, store at 4°C for up to one month. Avoid repeated freeze-thaw cycles.
Host	Rabbit
Uniprot ID	Q12778

Technical Details

Immunogen	Synthetic phosphopeptide derived from human FKHR around the phosphorylation site of Serine 256.
Cross Reactivity	No cross reactivity with other proteins.
Isotype	IgG
Form	Liquid
Concentration	1 mg/ml
Purification	The antibody was affinity-purified from rabbit antiserum by affinity-chromatography using epitope-specific immunogen and the purity is > 95% (by SDS-PAGE).
Suggested Dilutions	WB: 1:500-1:1000 IHC: 1:50-1:200

Anti-FKHR/FOXO1A (phospho-S256) Antibody (A00073S256-1) Images



Immunohistochemistry (IHC) analyzes of p-FKHR/FOXO1A (S256)pAb in paraffin-embedded human breast carcinoma tissue.

Submit a product review to [Biocompare.com](https://www.biocompare.com)

Submit a review of this product to [Biocompare.com](https://www.biocompare.com) to receive a \$20 Amazon.com giftcard! Your reviews help your fellow scientists make the right decisions. Thank you for your contribution.



Anti-FKHR/FOXO1A (phospho-S256) Antibody

For Research Use Only. Not for use in diagnostic procedures.