

## Anti-B-raf Antibody

Catalog Number: A00075

### About BRAF

B-raf belongs to the raf/mil family of serine/threonine protein kinases and plays a role in regulating the MAP kinase/ERKs signaling pathway, which affects cell division, differentiation, and secretion. The Ras/Raf/MEK/ERK and Ras/PI3K/PTEN/Akt pathways interact with each other to regulate growth and in some cases tumorigenesis. Mutations in B-raf have been associated with several cancers, including non-Hodgkin lymphoma, colorectal cancer, malignant melanoma, thyroid carcinoma, non-small cell lung carcinoma, and adenocarcinoma of lung, leading to speculation on the possibility of B-raf as a therapeutic target for treating cancers. Mutations in this gene have also been associated with cardiofaciocutaneous syndrome (CFCS), a disease characterized by heart defects, mental retardation and a distinctive facial appearance.

### Overview

Product Name	Anti-B-raf Antibody
Reactive Species	Human, Mouse
Description	Boster Bio Anti-B-raf Antibody (Catalog # A00075). Tested in ELISA, WB, IHC-P, IF applications. This antibody reacts with Human, Mouse.
Application	ELISA, IF, IHC-P, WB
Clonality	Polyclonal
Formulation	B-raf Antibody is supplied in PBS containing 0.02% sodium azide.
Storage Instructions	B-raf antibody can be stored at 4°C for three months and -20°C, stable for up to one year.
Host	Rabbit
Uniprot ID	P15056

### Technical Details

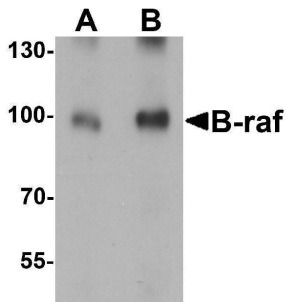
Immunogen	Anti-B-raf antibody was raised against a peptide corresponding to 19 amino acids near the center of human B-raf. The immunogen is located within amino acids 330 - 380 of B-raf.
Predicted Reactive Species	Chicken, Rat
Cross Reactivity	This antibody will not cross-react with C-raf.
Isotype	IgG
Form	Liquid
Concentration	1 mg/mL
Purification	B-raf Antibody is affinity chromatography purified via peptide column.

Suggested Dilutions

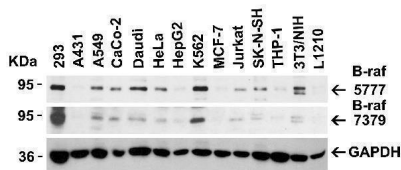
WB: 0.5-2 ug/mL; IHC: 2.5 ug/mL; IF: 20 ug/mL.

Antibody validated: Western Blot in human and mouse samples; Immunohistochemistry in human samples and Immunofluorescence in human samples. All other applications and species not yet tested. Optimal dilutions for each application should be determined by the researcher.

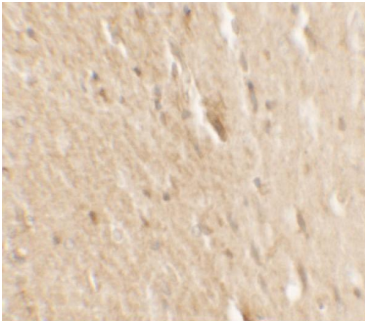
## Anti-B-raf Antibody (A00075) Images



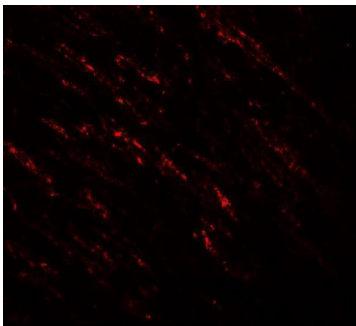
Western Blot Validation in Human Brain Tissue Loading: 15 ug of lysates per lane. Antibodies: B-raf A00075, (A:1 ug/mL; B:2 ug/mL), 1h incubation at RT in 5% NFDN/TBST. Secondary: Goat anti-rabbit IgG HRP conjugate at 1:10000 dilution.



Independent Antibody Validation (IAV) via Protein Expression Profile in Cell Lines Loading: 15 ug of lysates per lane. Antibodies: B-raf 5777, (0.5 ug/mL), B-raf A00075, (0.5 ug/mL) and GAPDH (0.02 ug/mL), 1h incubation at RT in 5% NFDN/TBST. Secondary: Goat anti-chicken (for 5777) and goat anti-rabbit (for A00075) IgG HRP conjugate at 1:10000 dilution.



Immunohistochemistry Validation of B-raf in Human Small Intestine Tissue Immunohistochemical analysis of paraffin-embedded Human Small Intestine Tissue using anti-B-raf antibody (A00075) at 2.5 ug/ml. Tissue was fixed with formaldehyde and blocked with 10% serum for 1 h at RT; antigen retrieval was by heat mediation with a citrate buffer (pH6). Samples were incubated with primary antibody overnight at 4°C. A goat anti-rabbit IgG H&L (HRP) at 1/250 was used as secondary. Counter stained with Hematoxylin.



Immunofluorescence Validation of B-raf in Human Small Intestine Tissue Immunofluorescent analysis of 4% paraformaldehyde-fixed Human Small Intestine Tissue labeling B-raf with A00075 at 20 ug/mL, followed by goat anti-rabbit IgG secondary antibody at 1/500 dilution (red).

## Submit a product review to Biocompare.com

Submit a review of this product to Biocompare.com to receive a \$20 Amazon.com giftcard! Your reviews help your fellow scientists make the right decisions. Thank you for your contribution.



For Research Use Only. Not for use in diagnostic procedures.