

Anti-LDL-R Antibody

Catalog Number: A00076

About LDLR

The low density lipoprotein receptor (LDL-R) gene family consists of cell surface proteins involved in receptor-mediated endocytosis of specific ligands. Low density lipoprotein (LDL) is normally bound at the cell membrane and taken into the cell ending up in lysosomes where the protein is degraded and the cholesterol is made available for repression of microsomal enzyme 3-hydroxy-3-methylglutaryl coenzyme A (HMG CoA) reductase, the rate-limiting step in cholesterol synthesis. At the same time, a reciprocal stimulation of cholesterol ester synthesis takes place. Mutations in the LDL-R gene cause the autosomal dominant disorder, familial hypercholesterolemia. Along with SCARB1, CLDN1, and the tetraspanin superfamily member CD81, LDL-R has been reported to be an entry factor for the Hepatitis C virus. At least three isoforms of LDL-R are known to exist.

Overview

Product Name	Anti-LDL-R Antibody
Reactive Species	Human, Mouse, Rat
Description	Boster Bio Anti-LDL-R Antibody (Catalog # A00076). Tested in ELISA, WB, IHC-P, IF applications. This antibody reacts with Human, Mouse, Rat.
Application	ELISA, IF, IHC-P, WB
Clonality	Polyclonal
Formulation	LDL-R Antibody is supplied in PBS containing 0.02% sodium azide.
Storage Instructions	LDL-R antibody can be stored at 4°C for three months and -20°C, stable for up to one year. Avoid repeated freeze-thaw cycles. Antibodies should not be exposed to prolonged high temperatures.
Host	Chicken
Uniprot ID	P01130

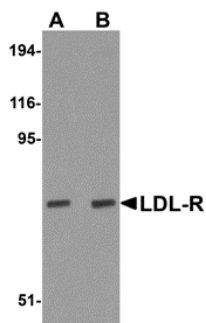
Technical Details

Immunogen	LDL-R antibody was raised against an 18 amino acid synthetic peptide near the center of human LDL-R. The immunogen is located within amino acids 490 - 540 of LDL-R.
Predicted Reactive Species	Pig, Rabbit
Isotype	IgY
Form	Liquid
Concentration	1 mg/mL
Purification	LDL-R Antibody is affinity chromatography purified via peptide column.

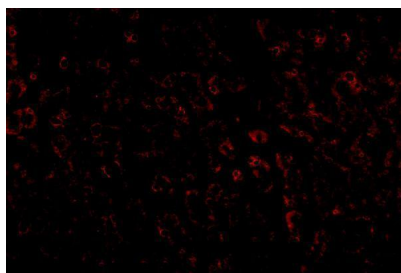
Suggested Dilutions

LDL-R antibody can be used for detection of LDL-R by Western blot at 1 - 2 ug/mL. Antibody can also be used for immunohistochemistry starting at 2.5 ug/mL. For immunofluorescence start at 20 ug/mL. Antibody validated: Western Blot in human samples; Immunohistochemistry in human samples and Immunofluorescence in human samples. All other applications and species not yet tested. Optimal dilutions for each application should be determined by the researcher.

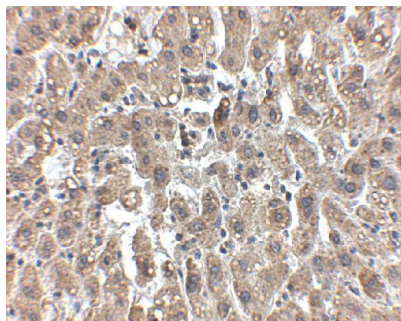
Anti-LDL-R Antibody (A00076) Images



Western blot analysis of LDL-R in human liver tissue lysate with LDL-R antibody at (A) 1 and (B) 2 ug/mL.



Immunofluorescence of LDLR in human liver tissue with LDLR antibody at 20 ug/mL.



Immunohistochemistry of LDL-R in human liver tissue with LDL-R antibody at 2.5 ug/mL.

Submit a product review to Biocompare.com

Submit a review of this product to Biocompare.com to receive a \$20 Amazon.com giftcard! Your reviews help your fellow scientists make the right decisions. Thank you for your contribution.



Anti-LDL-R Antibody

For Research Use Only. Not for use in diagnostic procedures.