

Anti-APP/ Beta-Amyloid (phospho-T668) Antibody

Catalog Number: A00081T668-1

Overview

Product Name	Anti-APP/ Beta-Amyloid (phospho-T668) Antibody
Reactive Species	Human, Mouse, Rat
Description	Boster Bio Anti-APP/ Beta-Amyloid (phospho-T668) Antibody catalog # A00081T668-1. Tested in WB,IHC applications. This antibody reacts with Human,Mouse,Rat.
Application	IHC, WB
Clonality	Polyclonal
Formulation	Rabbit IgG, 1mg/ml in PBS with 0.02% sodium azide, 50% glycerol, pH7.2
Storage Instructions	Store at -20°C for one year. For short term storage and frequent use, store at 4°C for up to one month. Avoid repeated freeze-thaw cycles.
Host	Rabbit
Uniprot ID	P05067

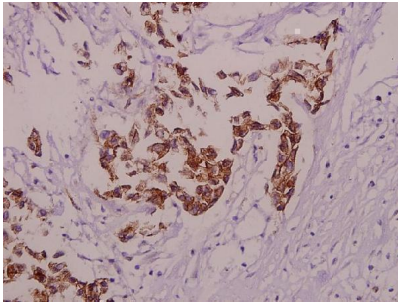
Technical Details

Immunogen	Synthetic phosphopeptide derived from human APP/beta-Amyloid around the phosphorylation site of Threonine 668.
Cross Reactivity	No cross reactivity with other proteins.
Isotype	IgG
Form	Liquid
Concentration	1.1 mg/ml by UV absorbance at 280 nm
Purification	The antibody was affinity-purified from rabbit antiserum by affinity-chromatography using epitope-specific immunogen and the purity is > 95% (by SDS-PAGE).
Suggested Dilutions	WB: 1:500-1:1000 IHC: 1:50-1:200

Anti-APP/ Beta-Amyloid (phospho-T668) Antibody (A00081T668-1) Images



Western blot (WB) analysis of p-APP/beta-Amyloid (T668) pAb at 1:500 dilution Lane1:The Kidney tissue lysate of Mouse(20ug) Lane2:The Uterus tissue lysate of Rat(20ug) Lane3:Panc1 whole cell lysate(20ug) Lane4:PC3 whole cell lysate(20ug)



Immunohistochemistry (IHC) analyzes of p-APP/beta-Amyloid (T668) pAb in paraffin-embedded human colorectal carcinoma tissue at 1:50.

Submit a product review to Biocompare.com

Submit a review of this product to Biocompare.com to receive a \$20 Amazon.com giftcard! Your reviews help your fellow scientists make the right decisions. Thank you for your contribution.



Anti-APP/ Beta-Amyloid (phospho-T668) Antibody

For Research Use Only. Not for use in diagnostic procedures.