

Anti-Smad2 (Phospho-S250) Antibody

Catalog Number: A00090S250

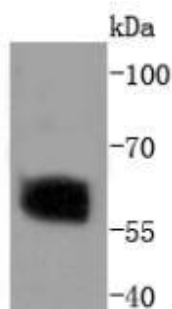
Overview

Product Name	Anti-Smad2 (Phospho-S250) Antibody
Reactive Species	Human, Mouse, Rat
Description	Boster Bio Anti-Smad2 (Phospho-S250) Antibody catalog # A00090S250. Tested in WB, Flow Cytometry applications. This antibody reacts with Human, Mouse, Rat.
Application	Flow Cytometry, WB
Clonality	Polyclonal
Formulation	Rabbit IgG, 1mg/ml in PBS with 0.02% sodium azide, 50% glycerol, pH7.2
Storage Instructions	Store at -20°C for one year. For short term storage and frequent use, store at 4°C for up to one month. Avoid repeated freeze-thaw cycles.
Host	Rabbit
Uniprot ID	Q15796

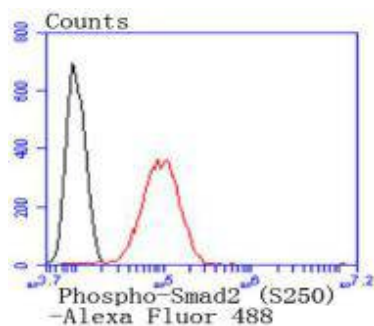
Technical Details

Immunogen	Synthetic phospho-peptide corresponding to residues surrounding Ser250 of human Smad2.
Cross Reactivity	No cross reactivity with other proteins.
Isotype	IgG
Form	Liquid
Concentration	1 mg/ml
Purification	ProA affinity purified
Suggested Dilutions	WB: 1:1,000-1:2,000 FC: 1:50-1:100

Anti-Smad2 (Phospho-S250) Antibody (A00090S250) Images



Western blot analysis of Phospho-Smad2 (S250) on HeLa cells lysates using anti-Phospho-Smad2 (S250) antibody at 1/1,000 dilution.



Flow cytometric analysis of HeLa cells with Phospho-Smad2 (S250) antibody at 1/50 dilution (red) compared with an unlabelled control (cells without incubation with primary antibody; black). Alexa Fluor 488-conjugated goat anti rabbit IgG was used as the secondary antibody.

Submit a product review to Biocompare.com

Submit a review of this product to Biocompare.com to receive a \$20 Amazon.com giftcard! Your reviews help your fellow scientists make the right decisions. Thank you for your contribution.



Anti-Smad2 (Phospho-S250) Antibody

For Research Use Only. Not for use in diagnostic procedures.