

Anti-Smad2 (Phospho-S255) Antibody

Catalog Number: A00090S255

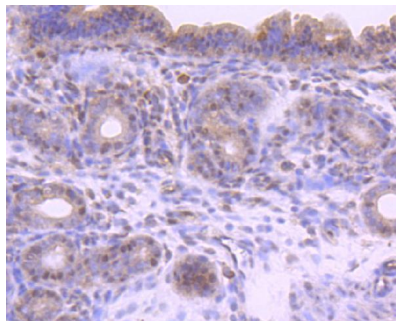
Overview

| | |
|----------------------|--|
| Product Name | Anti-Smad2 (Phospho-S255) Antibody |
| Reactive Species | Human, Mouse, Rat |
| Description | Boster Bio Anti-Smad2 (Phospho-S255) Antibody catalog # A00090S255. Tested in WB,IHC,IP applications. This antibody reacts with Human,Mouse,Rat. |
| Application | IP, IHC, WB |
| Clonality | Polyclonal |
| Formulation | Rabbit IgG, 1mg/ml in PBS with 0.02% sodium azide, 50% glycerol, pH7.2 |
| Storage Instructions | Store at -20°C for one year. For short term storage and frequent use, store at 4°C for up to one month. Avoid repeated freeze-thaw cycles. |
| Host | Rabbit |
| Uniprot ID | Q15796 |

Technical Details

| | |
|---------------------|--|
| Immunogen | Synthetic phospho-peptide corresponding to residues surrounding Ser255 of human Smad2. |
| Cross Reactivity | No cross reactivity with other proteins. |
| Isotype | IgG |
| Form | Liquid |
| Concentration | 1 mg/ml |
| Purification | ProA affinity purified |
| Suggested Dilutions | WB: 1:1,000 IHC: 1:50-1:200 |

Anti-Smad2 (Phospho-S255) Antibody (A00090S255) Images



Immunohistochemical analysis of paraffin-embedded mouse uterus tissue using anti-Phospho-Smad2(S255) antibody. Counter stained with hematoxylin.

Submit a product review to Biocompare.com

Submit a review of this product to Biocompare.com to receive a \$20 Amazon.com giftcard! Your reviews help your fellow scientists make the right decisions. Thank you for your contribution.



Anti-Smad2 (Phospho-S255) Antibody

For Research Use Only. Not for use in diagnostic procedures.