

## Anti-Smad2 (phospho-S467) Antibody

Catalog Number: A00090S467

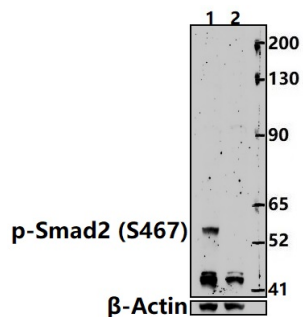
### Overview

Product Name	Anti-Smad2 (phospho-S467) Antibody
Reactive Species	Human, Mouse, Rat
Description	Boster Bio Anti-Smad2 (phospho-S467) Antibody catalog # A00090S467. Tested in WB,IHC applications. This antibody reacts with Human,Mouse,Rat.
Application	IHC, WB
Clonality	Polyclonal
Formulation	Rabbit IgG, 1mg/ml in PBS with 0.02% sodium azide, 50% glycerol, pH7.2
Storage Instructions	Store at -20°C for one year. For short term storage and frequent use, store at 4°C for up to one month. Avoid repeated freeze-thaw cycles.
Host	Rabbit
Uniprot ID	Q15796

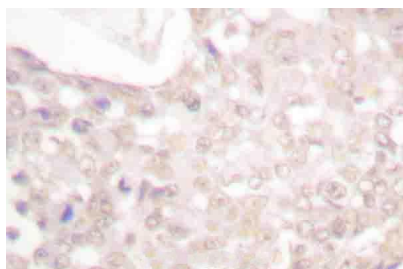
### Technical Details

Immunogen	Synthetic phosphopeptide derived from human Smad2 around the phosphorylation site of Serine 467.
Cross Reactivity	No cross reactivity with other proteins.
Isotype	IgG
Form	Liquid
Concentration	1 mg/ml
Purification	The antibody was affinity-purified from rabbit antiserum by affinity-chromatography using epitope-specific immunogen and the purity is > 95% (by SDS-PAGE).
Suggested Dilutions	WB: 1:500-1:1000 IHC: 1:50-1:200

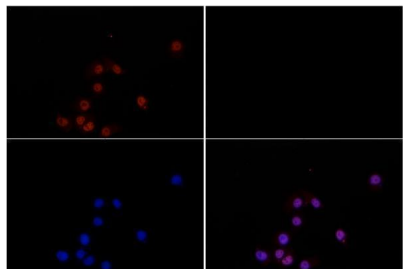
## Anti-Smad2 (phospho-S467) Antibody (A00090S467) Images



Western blot (WB) analysis of Smad2 (phospho-Ser467) polyclonal antibody at 1:500 dilution Lane1:HepG2 treated with TGF-beta(100 ng/ml,30 minutes) whole cell lysate(30ug) Lane2:HepG2 whole cell lysate(30ug)



Immunohistochemistry (IHC) analyzes of p-Smad2 (S467) pAb in paraffin-embedded human breast cancer tissue.



Immunofluorescence analysis of HepG2 cells using Smad2 (phospho-S467) pAb at dilution of 1:200 (40x lens).

### Submit a product review to Biocompare.com

Submit a review of this product to Biocompare.com to receive a \$20 Amazon.com giftcard! Your reviews help your fellow scientists make the right decisions. Thank you for your contribution.



Anti-Smad2 (phospho-S467) Antibody

For Research Use Only. Not for use in diagnostic procedures.