

Anti-TAU MAPT Antibody

Catalog Number: A00097

About TAU

The microtubular-associated protein TAU (MAPT), more commonly known as TAU, is normally a highly soluble protein found predominantly in neurons (1), but accumulations of highly phosphorylated tau protein aggregates are observed in several neurodegenerative diseases including Alzheimer's disease, progressive supranuclear palsy, corticobasal degeneration, and frontotemporal lobar dementia. It was thought that these pathological tau aggregates were the toxic form of tau, but recent studies indicate that soluble and highly phosphorylated tau species are more closely associated with synaptic dysfunction and cell loss (2,3). Mutations in the TAU gene have also been associated with several of these neurodegenerative diseases (4).

Overview

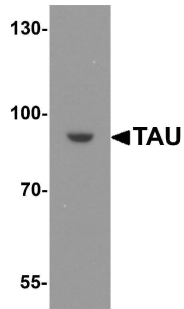
Product Name	Anti-TAU MAPT Antibody
Reactive Species	Human, Mouse, Rat
Description	Boster Bio Anti-TAU MAPT Antibody (Catalog # A00097). Tested in ELISA, WB, IHC-P applications. This antibody reacts with Human, Mouse, Rat.
Application	ELISA, IHC-P, WB
Clonality	Polyclonal
Formulation	TAU antibody is supplied in PBS containing 0.02% sodium azide.
Storage Instructions	TAU antibody can be stored at 4°C for three months and -20°C, stable for up to one year.
Host	Rabbit
Uniprot ID	P10636

Technical Details

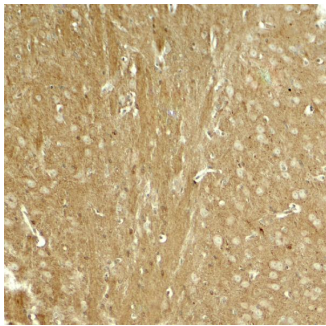
Immunogen	TAU antibody was raised against a 19 amino acid peptide near the amino terminus of human TAU. The immunogen is located within amino acids 210 - 260 of TAU.
Predicted Reactive Species	Bovine, Guinea Pig, Pig, Rabbit, Sheep
Cross Reactivity	TAU antibody is human, mouse and rat reactive. Multiple isoforms of TAU are known to exist; this antibody will only detect the two longest isoforms.
Isotype	IgG
Form	Liquid
Concentration	1 mg/mL

Purification	TAU antibody is affinity chromatography purified via peptide column.
Suggested Dilutions	TAU antibody can be used for detection of TAU by Western blot at 1 - 2 ug/ml. Antibody can also be used for immunohistochemistry starting at 5 ug/mL. Antibody validated: Western Blot in human and rat samples and Immunohistochemistry in mouse samples. All other applications and species not yet tested. Optimal dilutions for each application should be determined by the researcher.

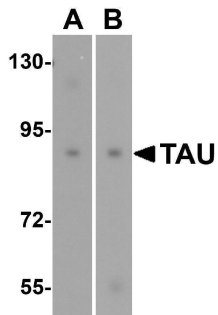
Anti-TAU MAPT Antibody (A00097) Images



Western blot analysis of TAU in SK-N-SH cell lysate with TAU antibody at 1 ug/ml.



Immunohistochemistry of TAU in mouse brain tissue with TAU antibody at 5 ug/ml.



Western blot analysis of TAU in (A) human and (B) rat brain tissue lysate with TAU antibody at 1 ug/mL.

Submit a product review to [Biocompare.com](https://www.biocompare.com)

Submit a review of this product to [Biocompare.com](https://www.biocompare.com) to receive a \$20 Amazon.com giftcard! Your reviews help your fellow scientists make the right decisions. Thank you for your contribution.



Anti-TAU MAPT Antibody

For Research Use Only. Not for use in diagnostic procedures.